



The Small Cruise
Ship Collection

www.small-cruise-ships.com

small-cruise-ships.com

info@small-cruise-ships.com

ISABELA II SOUTHEASTERN GALAPAGOS ISLANDS 7 DAY ITINERARY

Our Southeastern Galapagos Yacht Itinerary begins with an introduction to the beautiful beaches of the archipelago over at Las Bachas. The following day, we'll travel down to San Cristobal Island, where you'll get a proper sense of the island life and visit a giant-tortoise breeding center. Next, magnificent Española Island awaits to dazzle your senses with the largest bird in Galapagos along with its epic coastlines and geography. Floreana is up next, providing insight into the intriguing human history of the Galapagos. After that, we'll visit Isabela and Fernandina Islands and get a chance to admire its geology as well as flightless cormorants and penguins. Santa Cruz and North Seymour round out this itinerary with tours of the lush highlands and spectacular wildlife.

SOUTHEASTERN ITINERARY MAP



ITINERARY

DAY 1 Baltra Island & Santa Cruz Island

Baltra Airport and Santa Cruz Island We land at Baltra Island and transfer to the nearby dock to board Yacht Isabela II, where we receive a introductory briefing and lunch. Las Bachas (Santa Cruz Island) A white beach with brackish lagoons that are the feeding grounds of various birds. Back on the ship, we will have a a briefing on the expedition plan and dinner.

DAY 2 San Cristobal Island

DAY 2 Punta Pitt (San Cristobal) It is the only site in the Galapagos where the three species of boobies can be found, the two species of frigatebirds and a colony of sea lions. Cerro Colorado (San Cristobal Island) At Cerro Colorado, we visit the breeding center for giant tortoises. Here, we also find the endemic San Cristobal lava lizard.

DAY 3 Española Island



The Small Cruise
Ship Collection

www.small-cruise-ships.com

01432 507 280 (within UK)

info@small-cruise-ships.com | small-cruise-ships.com



The Small Cruise Ship Collection

www.small-cruise-ships.com



small-cruise-ships.com

info@small-cruise-ships.com

Gardner Bay (Española Island) We can go on a walk to observe the sea lions, mockingbirds, and finches. Kayaking, snorkeling, or glass-bottom boat rides are also offered. Punta Suarez (Española Island) Following lunch aboard, we go on an exciting trail across lava/boulder terrain. We can observe beautiful waved albatrosses, boobies, and swallow-tail gulls.

Please Note:

Itineraries are subject to change.

DAY 4 Floreana Island

Cormorant Point (Floreana Island) We disembark and walk to a brackish lagoon where American flamingos can be observed. At Champion Islet, guests can snorkel or glass-bottom boat ride. Post Office Bay & Baroness Cove (Floreana Island) After lunch, we land at Post Office Bay to visit the historic barrel that has served as a post office.

DAY 5 Isabela Island & Fernandina Island

Punta Moreno (Isabela Island) In the morning, we search the mangroves for sea turtles. Later, we enjoy a glass-bottom boat ride or deep-water snorkel. Punta Mangle (Fernandina Island) In the afternoon, we explore the coastline, home to Galapagos penguins and flightless cormorants.

DAY 6 Santa Cruz Island & North Seymour Island

Eden Islet A panga ride takes us to Eden Islet, where we can observe blue-footed boobies, and reef sharks North Seymour Island In the afternoon, we walk between numerous nesting frigatebirds. Later, we attend an evening briefing, farewell cocktail, and dinner.

DAY 7 Baltra Airport

Our journey ends at Baltra Island where we transfer to the airport to take the flight back to the mainland.



The Small Cruise Ship Collection

www.small-cruise-ships.com

01432 507 280 (within UK)

info@small-cruise-ships.com | small-cruise-ships.com



The Small Cruise Ship Collection

www.small-cruise-ships.com



small-cruise-ships.com

info@small-cruise-ships.com

YOUR SHIP: ISABELLA II

YOUR SHIP:	Isabella II
VESSEL TYPE:	Small Ship
LENGTH:	53.7m
PASSENGER CAPACITY:	40 guests
BUILT/REFURBISHED:	1979 / 2000

The Isabela II cruises offer enriching wildlife encounters whether amid the islands' haunting volcanic landscapes or beneath the waves of its marine reserve, all in the company of passionate, dedicated and expert naturalist guides. The islands' marine life can be appreciated with a snorkel and mask, paddling a kayak or aboard our glass-bottom boat. On board, guests find delicious cuisine, faultless service and excellent facilities, including a Jacuzzi, fitness room, bar and outside deck for _al fresco_ meals, drinks and sunbathing. Her crew has remained virtually unchanged for years, their dedication, attention to detail and passion for service touching every one of her guests.



The Small Cruise Ship Collection

www.small-cruise-ships.com

01432 507 280 (within UK)

info@small-cruise-ships.com | small-cruise-ships.com



The Small Cruise Ship Collection

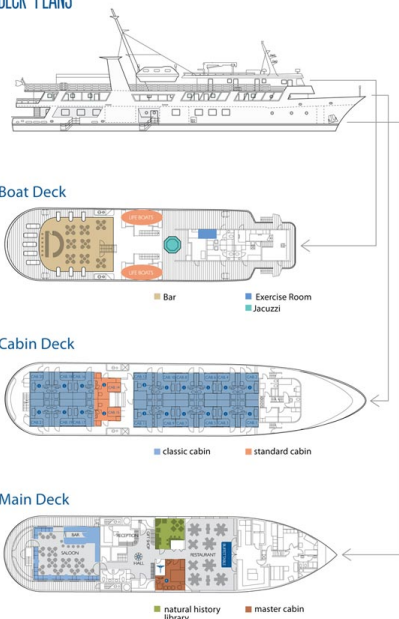
www.small-cruise-ships.com

small-cruise-ships.com

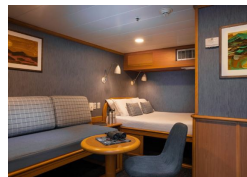
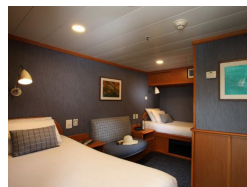
info@small-cruise-ships.com

INSIDE YOUR SHIP

DECK PLANS

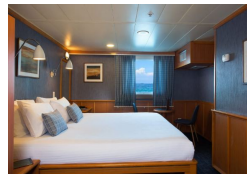


Classic Cabin



Classic Family Cabin

Owner's Cabin



Standard Cabin



The Small Cruise Ship Collection

www.small-cruise-ships.com

01432 507 280 (within UK)

info@small-cruise-ships.com | small-cruise-ships.com



The Small Cruise Ship Collection

www.small-cruise-ships.com

small-cruise-ships.com

info@small-cruise-ships.com

PRICING

23-May-2024 to 29-May-2024

Owner's Cabin	£5026 GBP pp
Classic Family Cabin	£4800 GBP pp
Standard Cabin	£4525 GBP pp
Classic Cabin	£4800 GBP pp

31-May-2024 to 06-Jun-2024

Standard Cabin	£4525 GBP pp
Owner's Cabin	£5026 GBP pp
Classic Family Cabin	£4800 GBP pp
Classic Cabin	£4800 GBP pp

06-Jun-2024 to 12-Jun-2024

Owner's Cabin	£5026 GBP pp
Classic Family Cabin	£4800 GBP pp
Standard Cabin	£4525 GBP pp
Classic Cabin	£4800 GBP pp

14-Jun-2024 to 20-Jun-2024

Classic Family Cabin	£4800 GBP pp
Standard Cabin	£4525 GBP pp
Classic Cabin	£4800 GBP pp
Owner's Cabin	£5026 GBP pp

20-Jun-2024 to 26-Jun-2024

Classic Family Cabin	£4800 GBP pp
Standard Cabin	£4525 GBP pp
Classic Cabin	£4800 GBP pp
Owner's Cabin	£5026 GBP pp

28-Jun-2024 to 04-Jul-2024

Classic Cabin	£4800 GBP pp
Standard Cabin	£4525 GBP pp
Owner's Cabin	£5026 GBP pp
Classic Family Cabin	£4800 GBP pp

04-Jul-2024 to 10-Jul-2024

Standard Cabin	£4525 GBP pp
Owner's Cabin	£5026 GBP pp
Classic Cabin	£4800 GBP pp
Classic Family Cabin	£4800 GBP pp

12-Jul-2024 to 18-Jul-2024

Owner's Cabin	£5026 GBP pp
Classic Family Cabin	£4800 GBP pp
Classic Cabin	£4800 GBP pp
Standard Cabin	£4525 GBP pp

18-Jul-2024 to 24-Jul-2024

Standard Cabin	£4525 GBP pp
Classic Cabin	£4800 GBP pp
Classic Family Cabin	£4800 GBP pp
Owner's Cabin	£5026 GBP pp



The Small Cruise Ship Collection

www.small-cruise-ships.com

01432 507 280 (within UK)

info@small-cruise-ships.com | small-cruise-ships.com



The Small Cruise Ship Collection

www.small-cruise-ships.com

small-cruise-ships.com

info@small-cruise-ships.com

PRICING

26-Jul-2024 to 01-Aug-2024

Standard Cabin	£4525 GBP pp
Owner's Cabin	£5026 GBP pp
Classic Family Cabin	£4800 GBP pp
Classic Cabin	£4800 GBP pp

01-Aug-2024 to 07-Aug-2024

Classic Family Cabin	£4800 GBP pp
Classic Cabin	£4800 GBP pp
Owner's Cabin	£5026 GBP pp
Standard Cabin	£4525 GBP pp

09-Aug-2024 to 15-Aug-2024

Classic Family Cabin	£4800 GBP pp
Classic Cabin	£4800 GBP pp
Standard Cabin	£4525 GBP pp
Owner's Cabin	£5026 GBP pp

15-Aug-2024 to 21-Aug-2024

Standard Cabin	£4525 GBP pp
Owner's Cabin	£5026 GBP pp
Classic Cabin	£4800 GBP pp
Classic Family Cabin	£4800 GBP pp

23-Aug-2024 to 29-Aug-2024

Owner's Cabin	£5026 GBP pp
Classic Family Cabin	£4800 GBP pp
Classic Cabin	£4800 GBP pp
Standard Cabin	£4525 GBP pp

29-Aug-2024 to 04-Sep-2024

Standard Cabin	£4525 GBP pp
Owner's Cabin	£5026 GBP pp
Classic Cabin	£4800 GBP pp
Classic Family Cabin	£4800 GBP pp

06-Sep-2024 to 12-Sep-2024

Standard Cabin	£4525 GBP pp
Owner's Cabin	£5026 GBP pp
Classic Cabin	£4800 GBP pp
Classic Family Cabin	£4800 GBP pp

12-Sep-2024 to 18-Sep-2024

Owner's Cabin	£5026 GBP pp
Standard Cabin	£4525 GBP pp
Classic Family Cabin	£4800 GBP pp
Classic Cabin	£4800 GBP pp

20-Sep-2024 to 26-Sep-2024

Classic Family Cabin	£4800 GBP pp
Standard Cabin	£4525 GBP pp
Owner's Cabin	£5026 GBP pp
Classic Cabin	£4800 GBP pp



The Small Cruise Ship Collection

www.small-cruise-ships.com

01432 507 280 (within UK)

info@small-cruise-ships.com | small-cruise-ships.com



The Small Cruise Ship Collection

www.small-cruise-ships.com

small-cruise-ships.com

info@small-cruise-ships.com

PRICING

26-Sep-2024 to 02-Oct-2024

Owner's Cabin	£5026 GBP pp
Classic Cabin	£4800 GBP pp
Standard Cabin	£4525 GBP pp
Classic Family Cabin	£4800 GBP pp

04-Oct-2024 to 10-Oct-2024

Classic Cabin	£4800 GBP pp
Standard Cabin	£4525 GBP pp
Owner's Cabin	£5026 GBP pp
Classic Family Cabin	£4800 GBP pp

10-Oct-2024 to 16-Oct-2024

Classic Cabin	£4800 GBP pp
Owner's Cabin	£5026 GBP pp
Standard Cabin	£4525 GBP pp
Classic Family Cabin	£4800 GBP pp

18-Oct-2024 to 24-Oct-2024

Classic Cabin	£4800 GBP pp
Classic Family Cabin	£4800 GBP pp
Owner's Cabin	£5026 GBP pp
Standard Cabin	£4525 GBP pp

24-Oct-2024 to 30-Oct-2024

Standard Cabin	£4525 GBP pp
Owner's Cabin	£5026 GBP pp
Classic Family Cabin	£4800 GBP pp
Classic Cabin	£4800 GBP pp

29-Nov-2024 to 05-Dec-2024

Classic Family Cabin	£4800 GBP pp
Standard Cabin	£4525 GBP pp
Owner's Cabin	£5026 GBP pp
Classic Cabin	£4800 GBP pp

05-Dec-2024 to 11-Dec-2024

Standard Cabin	£4525 GBP pp
Classic Family Cabin	£4800 GBP pp
Classic Cabin	£4800 GBP pp
Owner's Cabin	£5026 GBP pp

13-Dec-2024 to 19-Dec-2024

Standard Cabin	£4525 GBP pp
Classic Cabin	£4800 GBP pp
Owner's Cabin	£5026 GBP pp
Classic Family Cabin	£4800 GBP pp

19-Dec-2024 to 25-Dec-2024

Standard Cabin	£4525 GBP pp
Classic Cabin	£4800 GBP pp
Owner's Cabin	£5026 GBP pp
Classic Family Cabin	£4800 GBP pp



The Small Cruise Ship Collection

www.small-cruise-ships.com

small-cruise-ships.com

info@small-cruise-ships.com

PRICING

27-Dec-2024 to 02-Jan-2025

Classic Family Cabin	£4800 GBP pp
Standard Cabin	£4525 GBP pp
Owner's Cabin	£5026 GBP pp
Classic Cabin	£4800 GBP pp

02-Jan-2025 to 08-Jan-2025

Owner's Cabin	£5026 GBP pp
Standard Cabin	£4525 GBP pp
Classic Cabin	£4800 GBP pp
Classic Family Cabin	£4800 GBP pp



The Small Cruise Ship Collection

www.small-cruise-ships.com

01432 507 280 (within UK)

info@small-cruise-ships.com | small-cruise-ships.com