



## INFINITY GALAPAGOS 8 DAY CRUISE A

The Galapagos Islands itinerary offers an exciting and diverse exploration of the archipelago's remarkable natural wonders and wildlife. Starting with Baltra Island Airport, travelers transfer to the boat and venture to Santa Cruz's Black Turtle Cove. The journey continues to Genovesa Island's El Barranco and Darwin Bay, followed by visits to Santiago Island's Sullivan Bay and Rabida Island. Santa Cruz Island hosts the Tortoise Breeding Center and El Chato before heading to Dragon Hill and Bachas Beach. Floreana Island's Post Office Bay and Cormorant Point or Devil's Crown showcase unique experiences. Española Island features Suarez Point and Gardner Islet, Osborn Islet, or Gardner Bay. The final day includes a visit to San Cristobal Island's Gianni Arismendi Interpretation Center before departing from San Cristobal Airport. Throughout, travelers witness the incredible biodiversity and pristine beauty of the Galapagos Islands, making for an unforgettable adventure.



### ITINERARY

#### Day 1: Tuesday SANTA CRUZ ISLAND

In the morning: Baltra Airport Arrival Morning flight from Quito or Guayaquil to Baltra, Galapagos Islands. You will arrive at Baltra Island in the morning. After passing through immigration and baggage claim, you will be met by a Infinity staff member and transferred to the yacht. You will be shown to your cabin where you will have some time to settle in before lunch and a welcome briefing. In the afternoon: Black Turtle Cove Visit Black Turtle Cove in the northern part of Santa Cruz. This inlet is surrounded by mangroves and is only accessible by dinghy. The shallow cove is a haven for young marine life. Black-tip and white-tip reef sharks, sea turtles, and a variety of rays are often spotted here.



## The Small Cruise Ship Collection

[www.small-cruise-ships.com](http://www.small-cruise-ships.com)

[small-cruise-ships.com](http://small-cruise-ships.com)

[info@small-cruise-ships.com](mailto:info@small-cruise-ships.com)

### Day 2: Wednesday GENOVESA ISLAND

In the morning: El Barranco El Barranco, also known as Prince Phillip's Steps, is a steep, rocky path that leads up a high cliff rock face. A marvelous view can be appreciated from here. This site is also home to Palo Santo vegetation as well as red-footed boobies, short-eared owls, Galapagos storm petrels, and Galapagos doves. In the afternoon: Darwin Bay Visit the white-sand coral beach of Darwin Bay which includes a half mile trail (0,75km) that winds through mangroves filled with land birds. Nazca boobies, red-footed boobies, and swallow-tailed gulls, which can easily be spotted here. Further down the path we'll find tidal pools where sea lions swim playfully. At the end is a spectacular view of a cliff.

### Day 3: Thursday SANTIAGO AND RABIDA ISLANDS

In the morning: Sullivan Bay You will visit Sullivan Bay located on the southeast part of Santiago. This place is interesting for its geology because the area is covered by lava flows. This place has elevations in the form of small volcanoes formed by the lava flows. In the afternoon: Rabida You will visit Rabida Island (or Jervis) which is one of the most colorful and volcanically varied islands in the archipelago as well as a great snorkeling site. We will start on Rabida's famous maroon/red sand beach, and after an easy hike, you will arrive to a stunning lookout to enjoy the amazing landscapes. The island is a birdwatcher's delight. Some species are abundant such as a few varieties of finches, Galapagos vermilion flycatchers, Galapagos hawks and brown pelicans.

### Day 4: Friday SANTA CRUZ ISLAND

In the morning: Fausto Llerena Breeding Center You will visit "Fausto Llerena" Giant Tortoises Creeding Center in Puerto Ayora, Santa Cruz Island, where giant tortoises are bred in

captivity; this is home to tortoises ranging from 3-inches (new hatchlings) to 4-feet long adults. Subspecies of the giant tortoises interact with one another, and many of the older tortoises are accustomed to humans stretching out their heads for a photo opportunity. The babies are kept until they are about four years-old and strong enough to survive on their own. In the afternoon: El Chato El Chato reserve is divided into two areas: Caseta and Chato. The trail begins at Santa Rosa (13.7 miles / 22 km) from Puerto Ayora, with the Caseta route being the most challenging. The reserve allows visitors to observe giant tortoises in the wild during the dry season and is also a good place to spot short-eared owls, Darwin's finches, yellow warblers, Galapagos rails and paint-billed crakes.

### Day 5: Saturday SANTA CRUZ ISLAND

In the morning: Dragon Hill The visitors' site at Dragon Hill is located in northwestern Santa Cruz Island and consists of a 1,600 m long trail that runs through three different environments. The beach is very rocky. At high tide it's a nice place for snorkeling. At this visiting site you can find vegetation of the typical intertidal zone and dry zone. In the afternoon: Bachas Beach Bachas Beach is located on the north shore of Santa Cruz and is a beach for swimming. One of the few remnants of the U.S. World War II presence in the Galapagos, a floating pier, can be seen here. You may see flamingos, Sally Lightfoot crabs, hermit crabs, black-necked stilts, and whimbrels. Sea turtles also nest on the beach.

### Day 6: Sunday FLOREANA ISLAND

In the morning: Post Office Bay You will land on a beach and head to a spot where 18th century whalers placed a wooden barrel used as an unofficial mail box. The custom continues to this day with Galapagos visitors. So, don't forget your postcards,



The Small Cruise Ship Collection

[www.small-cruise-ships.com](http://www.small-cruise-ships.com)

01432 507 280 (within UK)

[info@small-cruise-ships.com](mailto:info@small-cruise-ships.com) | [small-cruise-ships.com](http://small-cruise-ships.com)





## The Small Cruise Ship Collection

[www.small-cruise-ships.com](http://www.small-cruise-ships.com)



[small-cruise-ships.com](http://small-cruise-ships.com)

[info@small-cruise-ships.com](mailto:info@small-cruise-ships.com)

and don't be surprised if the post card arrives to its destination before you even get home! In the afternoon: Cormorant Point Cormorant Point hosts a large flamingo lagoon where other birds such as common stilts and white-cheeked pintails can also be seen. The beaches on this island are distinct: The Green Beach is named so due to its green color, which comes from a high percentage of olivine crystals in the sand, and the Four Sand Beach is composed of white coral. Afterwards: Devil's Crown You will have a chance to snorkel around Devil's Crown which is the rocky remains of an offshore volcano sticking out of the water. This is a great location to spot a wide range of marine creatures.

### Day 7: Monday ESPAÑOLA ISLAND

In the morning: Suarez Point On the trail to Suarez Point you will have the chance to spot blue-footed boobies, albatrosses, and Nazca boobies. This island is the breeding site of nearly all of the world's 12,000 pairs of waved albatrosses. You will also visit a beautiful site on the ocean front where there is a cliff that the large albatrosses use as a launching pad! You will have the chance to see the famous blowhole that spurts sea water into the air. The landscape is great for photography. In the afternoon: Gardner Bay, Gardner Islet & Osborn Islet This excursion takes you to the spectacular Gardner Bay. After landing, you can walk across a lovely white-sand beach amongst a busy sea lion colony or dive into the water to swim with sea lion pups. You may also see curious mockingbirds on the beach.

### Day 8: Tuesday SAN CRISTOBAL ISLAND

In the morning: Gianni Arismendi Interpretation Center This site is part of an environment project. The tour of this center will explore the natural history of the islands including human interaction and conservation efforts. The Museum of Natural History explains the volcanic origin of the archipelago, ocean

currents, climate, and the arrival of endemic species. The Human History exhibit chronologically describes significant events such as discovery and colonization of the islands. Afterwards: San Cristobal airport departure After this final visit, you will be transferred to the San Cristobal airport in time for your flight back to the mainland.

#### Please Note:

Itineraries are subject to change.



The Small Cruise  
Ship Collection

[www.small-cruise-ships.com](http://www.small-cruise-ships.com)



[small-cruise-ships.com](http://small-cruise-ships.com)

[info@small-cruise-ships.com](mailto:info@small-cruise-ships.com)

## YOUR SHIP: INFINITY

**YOUR SHIP:** Infinity

**VESSEL TYPE:**

**LENGTH:**

**PASSENGER CAPACITY:**

**BUILT/REFURBISHED:**

sundeck has a total surface of 250 m<sup>2</sup> (820 sq ft) with partial sun-shade cover of 70 m<sup>2</sup> (230 sq ft) and comfortable deck-beds for all passengers all with easy access to the Jacuzzi tub. The vessel has a rear platform to the sea with ladders for easy access into the water and offers two outdoor showers and two deck lavatories. VIP

The MV INFINITY (launched in 2015) is a 49m (161 ft) long, 8.8 m (28 ft) wide luxury vessel, with a cruising speed of nine knots, Infinity has the latest state-of-the-art equipment and amenities. Infinity carries a maximum of just 38 passengers in 19 twin or double cabins, guaranteeing an intimate setting for all guests. Cabins The modern cabins are fully equipped with air condition, safe deposit box, fire alarm, emergency lights and audio system for announcements by the captain or Tour Director. In addition each cabin has life jackets, desk and chair, wardrobe, night stand, small sofa and a porthole window. Bathrooms are equipped with toilet, shower, wash basin and hair dryer. All cabins have indoor passage access to the bar and restaurant area (except two main deck cabins that are connected to restaurant via deck). Cabin sizes \- Upper Deck VIP cabin, Twin/Double beds, size 15.7m<sup>2</sup>with balcony- Main DeckStandard cabin,Twin/Double beds, size 17m<sup>2</sup> with window-Lower Deck cabin, Standard Twin/Double beds, size 16/17m<sup>2</sup> Porthole Social Areas The spacious fully air-conditioned main deck dining room offers privacy for each guest including bar area with LCD TV, a corner buffet breakfast table and lounge area on the rear of the upper deck. The lounge



cabin balcony

The Small Cruise  
Ship Collection

[www.small-cruise-ships.com](http://www.small-cruise-ships.com)

**01432 507 280** (within UK)

[info@small-cruise-ships.com](mailto:info@small-cruise-ships.com) | [small-cruise-ships.com](http://small-cruise-ships.com)





# The Small Cruise Ship Collection

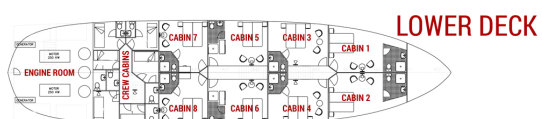
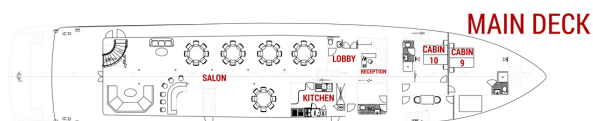
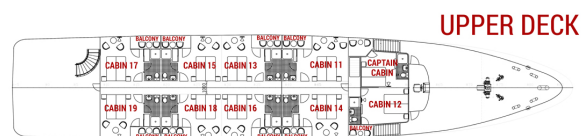
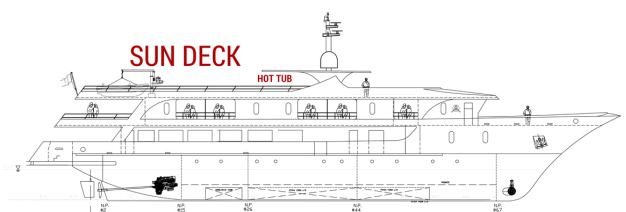
[www.small-cruise-ships.com](http://www.small-cruise-ships.com)



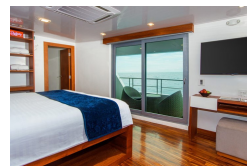
[small-cruise-ships.com](http://small-cruise-ships.com)

[info@small-cruise-ships.com](mailto:info@small-cruise-ships.com)

## INSIDE YOUR SHIP



Cabin





# The Small Cruise Ship Collection

[www.small-cruise-ships.com](http://www.small-cruise-ships.com)

[small-cruise-ships.com](http://small-cruise-ships.com)

[info@small-cruise-ships.com](mailto:info@small-cruise-ships.com)

## PRICING

**01-Jul-2025 to 08-Jul-2025**

Cabin	£6734 GBP pp
-------	--------------

**29-Jul-2025 to 05-Aug-2025**

Cabin	£6734 GBP pp
-------	--------------

**12-Aug-2025 to 19-Aug-2025**

Cabin	£6734 GBP pp
-------	--------------

**23-Sep-2025 to 30-Sep-2025**

Cabin	£6734 GBP pp
-------	--------------

**13-Jan-2026 to 20-Jan-2026**

Cabin	£6734 GBP pp
-------	--------------

**27-Jan-2026 to 03-Feb-2026**

Cabin	£6734 GBP pp
-------	--------------

**10-Mar-2026 to 17-Mar-2026**

Cabin	£6734 GBP pp
-------	--------------

**24-Mar-2026 to 31-Mar-2026**

Cabin	£6734 GBP pp
-------	--------------

**21-Apr-2026 to 28-Apr-2026**

Cabin	£6734 GBP pp
-------	--------------

**05-May-2026 to 12-May-2026**

Cabin	£6734 GBP pp
-------	--------------

**19-May-2026 to 26-May-2026**

Cabin	£6734 GBP pp
-------	--------------

**02-Jun-2026 to 09-Jun-2026**

Cabin	£6734 GBP pp
-------	--------------

**16-Jun-2026 to 23-Jun-2026**

Cabin	£6734 GBP pp
-------	--------------

**30-Jun-2026 to 07-Jul-2026**

Cabin	£6734 GBP pp
-------	--------------

**14-Jul-2026 to 21-Jul-2026**

Cabin	£6734 GBP pp
-------	--------------

**28-Jul-2026 to 04-Aug-2026**

Cabin	£6734 GBP pp
-------	--------------

**11-Aug-2026 to 18-Aug-2026**

Cabin	£6734 GBP pp
-------	--------------

**06-Oct-2026 to 13-Oct-2026**

Cabin	£6734 GBP pp
-------	--------------

**20-Oct-2026 to 27-Oct-2026**

Cabin	£6734 GBP pp
-------	--------------

**03-Nov-2026 to 10-Nov-2026**

Cabin	£6734 GBP pp
-------	--------------

**17-Nov-2026 to 24-Nov-2026**

Cabin	£6734 GBP pp
-------	--------------

**01-Dec-2026 to 08-Dec-2026**

Cabin	£6734 GBP pp
-------	--------------



The Small Cruise Ship Collection

[www.small-cruise-ships.com](http://www.small-cruise-ships.com)

**01432 507 280** (within UK)

[info@small-cruise-ships.com](mailto:info@small-cruise-ships.com) | [small-cruise-ships.com](http://small-cruise-ships.com)



## The Small Cruise Ship Collection

[www.small-cruise-ships.com](http://www.small-cruise-ships.com)



[small-cruise-ships.com](http://small-cruise-ships.com)

[info@small-cruise-ships.com](mailto:info@small-cruise-ships.com)

**15-Dec-2026 to 22-Dec-2026**

**Cabin**

**£6734 GBP pp**



The Small Cruise  
Ship Collection

[www.small-cruise-ships.com](http://www.small-cruise-ships.com)

**01432 507 280** (within UK)

[info@small-cruise-ships.com](mailto:info@small-cruise-ships.com) | [small-cruise-ships.com](http://small-cruise-ships.com)