

The Small Cruise Ship Collection

www.small-cruise-ships.com



small-cruise-ships.com

info@small-cruise-ships.com

ICONIC CAPITALS & TOWNS OF THE BALTIC

At the heart of the Baltic Sea, discover the emblematic towns and capitals of the region, a blend of History and sumptuous landscapes. During this brand-new 8-day cruise aboard Le Dumont-d'Urville, fall under the spell of the majestic panoramas of northern Europe. Your cruise will start at Helsinki. Located on a peninsula surrounded by almost 300 islands, the verdant capital of Finland will charm you with its Art Nouveau architecture. You will visit Tallinn, emblematic city of the Hanseatic League, the large trading network that dominated the Baltic Sea for several centuries. Listed as UNESCO Heritage Site, this once opulent city still has remarkably well-preserved public buildings, merchant houses and warehouses. Le Dumont-d'Urville will then chart a course for Stockholm. Built on water, the Swedish capital embraces nature, which is omnipresent there. Its blend of medieval architecture, colourful houses and trendy neighbourhoods makes it a particularly enjoyable city to visit. Le Dumont-d'Urville will then sail to the Swedish island of Gotland and call at Visby, a site that was important for the Hanseatic League in the Baltic Sea around the 13th century. UNESCO Heritage Site, this once opulent city still has remarkably well-preserved ramparts, public buildings, merchant houses and warehouses. Your ship will then call at Gdansk, famous for its amber stone and its shipyards. The former Hanseatic city will reveal some of its architectural treasures, in Gothic and Baroque styles, restored or rebuilt. For the first time, PONANT will make a port of call on the Danish island of Christiansø, a territory measuring less than 0,5 km² (barely 0,3 square miles) in the very heart of the Baltic Sea. The rocky shorelines of this natural and preserved sanctuary have

magnificent panoramas. You will set a course for the charming fishing village of Gudhjem. Located on the small Danish island of Bornholm, it is very popular among the Danes for its gentle way of life and its beautiful landscapes of rock formations. Your ship will finally reach Copenhagen, where you can explore its canals and historic



districts.

ITINERARY

Days 1 - 2 HELSINKI

Seated in the southern peninsula of Finland, Helsinki offers the



The Small Cruise Ship Collection

www.small-cruise-ships.com



small-cruise-ships.com

info@small-cruise-ships.com

buzz of a cosmopolitan city that has opted for both elegance and beauty. Explore its historical centre where the soft hues of neoclassical buildings are juxtaposed with spectacular modern constructions. The bustling Kallio district is teeming with boutiques and restaurants where you can taste some local specialities like graavilohi - a sweet, marinated, aromatic salmon dish. Keskuspuisto park, a stone's throw from the centre, is a good place to sit and unwind.

Day 3 TALLINN

Opening onto the Baltic sea, to the far north of Estonia, the town of Tallin will win you over with the picturesque charm of its architecture. You can meander through its little streets in the heart of the medieval centre where its gothic town hall has been standing since 1404. The Kiek in de Kok tower, the Orthodox Alexander Nevski cathedral, or Toompea castle give visitors a taste of this town's rich past. The city was particularly active during the medieval period, as is demonstrated by the very beautiful monuments from this period that are still visible. Don't hesitate to lose yourself in the heart of Tallinn, listed as a UNESCO World Heritage Site.

Day 4 STOCKHOLM

The capital of Sweden occupies an archipelago in the east of the country at the junction of Malar Lake and the Baltic sea. In Gamla stan, meaning "old town" in Swedish, you can stroll at your leisure in picturesque medieval streets until you reach the majestic Royal Palace. On the green island of Djurgården, you can visit several very different kinds of cultural centres: the Vasa

museum is dedicated to a 17th century three-mast, the ecomuseum of Skansen presents traditional customs, and the ABBA museum is dedicated to the legendary pop group. For a fantastic, all-encompassing view of Stockholm, you can take a ride in SkyView, a glass-encased sphere gondola that takes you to the top of the world's largest building, the Ericsson Globe, a Stockholm landmark.

Day 5 VISBY, GOTLAND

This old Hanseatic city lies to the west coast of Gotland, a Swedish island in the Baltic sea. Pass through the spectacular Visby fortifications and visit the old town, a UNESCO World Heritage site. You'll discover the grand Visby homes of rich merchants as well as the lovely low wooden houses in the little cobbled streets. Don't miss Saint Mary's cathedral with its octagonal steeples, as well as Powder tower along the fortifications. Make sure you stop over in one of the rose-adorned cafes; indeed roses abound in this town where you can taste one of the island's specialities, namely saffron pancakes with red fruit.

Day 6 GDANSK

This ravishing city on the Baltic sea is nicknamed "the golden door of Poland", and you'll understand why when you see its beautiful Hanseatic architecture. You'll be charmed by the mouldings and gables that enhance the colourful façades of the houses. Along the Vistula Quays, you can take a pleasant stroll among the crafts shops. In elegant Mariacka street, the amber jewellers will most certainly tempt you into their boutiques. You



The Small Cruise Ship Collection

www.small-cruise-ships.com

01432 507 280 (within UK)

info@small-cruise-ships.com | small-cruise-ships.com



The Small Cruise Ship Collection

www.small-cruise-ships.com

small-cruise-ships.com

info@small-cruise-ships.com

can visit the church of Saint-Mary and its astronomic clock. Not far, the majestic Long Market square offers the famous Artus Court and the rich Gdansk History Museum.

Day 7 CHRISTANSOE & GUDHJEM, BORNHOLM

In the very heart of the Baltic Sea, in the Ertholmene archipelago, the small island of Christiansoe - less than 0,5 km² (barely 0,3 square miles) - awaits you. Thanks to its geographic form, which constitutes a natural harbour with the island of Frederikso, it has been used as such for more than a thousand years. Pirates and fishermen succeeded one another here before the construction of its fortress, built between the 17th and 18th centuries, in the time of the Danish-Swedish wars. Visiting Christianso, you see the shaping of great history, the re-emergence of the rivalries and alliances that took place in the Baltic Sea. Today, this peaceful island offers you wild and preserved nature. A natural reserve since 1926, it is home in particular to a very large population of nesting and migrating birds that find food and tranquillity here. Lying in the south-west of the Baltic Sea, the medieval village of Gudhjem, on the island of Bornholm, is one of the most visited and most popular villages in Denmark. As you stroll along its picturesque streets, you will fall under the spell of its varied landscapes, its easy way of life, and the authenticity of this charming town with half-timbered houses topped with red roofs, in the Danish tradition. It is here, along these charming streets, that the first herring smokehouses were built in the mid-19th century, attracting all the region's fishermen. Tucked away in a gorgeous natural setting composed of rocky cliffs, dense forests and beaches of white sand, Gudhjem will provide an unforgettable interlude where time will seem to stand still.

Day 8 COPENHAGEN

Connected to the far eastern side of Sealand island, a few kilometres away from the Swedish coasts, Copenhagen offers you the high colour of Scandinavian capitals. You can discover the city's riches that weaves through the canal networks through the historical districts of Christiansborg and Nyhavn. Many palaces provide an apercu of Danish history. For eating, you can try out the smorrebrod, traditional danish sandwiches made with ham, cheese or smoked fish.

Please Note:

Itineraries are subject to change.



The Small Cruise Ship Collection

www.small-cruise-ships.com



small-cruise-ships.com

info@small-cruise-ships.com

YOUR SHIP: LE DUMONT D'URVILLE

YOUR SHIP: Le Dumont d'Urville

VESSEL TYPE:

LENGTH:

PASSENGER CAPACITY:

BUILT/REFURBISHED:

Featuring innovative and environmentally-friendly equipment, elegantly designed staterooms, spacious suites with large windows, and lounge areas that open onto the outside, this new limited-capacity yacht boasting just 92 staterooms and suites will offer you a truly unique cruising experience. As the first ship in a new series that remains true to the Ponant spirit, Le Dumont d'Urville will embody the unique atmosphere that is the cruise line's hallmark: a subtle blend of refinement, intimacy and comfort. Aboard this ship that flies the French flag, you will experience the incomparable pleasure of an intimate cruise, with the possibility of exploring an ever-increasing range of destinations in an ethnic-chic ambiance with luxury service. Experience a luxurious setting where the accent is on authenticity and passion for travel. RESTAURANTS As it is an essential part of French culture, gastronomy will naturally have pride of place aboard this new ship. Through its two restaurants, Le Dumont d'Urville will invite you on a journey to elegance and epicureanism. In a relaxed atmosphere, a first dining area located on Deck 3 and able to seat 70 will serve grilled meats daily, along with a variety of salads and desserts. To the back of Deck 4, you will find a 260 m² panoramic restaurant which can

accommodate all of our passengers in a single sitting. Designed differently to that on our other ships, this dining area, which opens onto the outside, will have a buffet of salads, desserts and cheeses at your disposal. Our discreet and attentive crew will provide table service for hot meals. PUBLIC AREAS Like Le Boreal and its sisterships, Le Dumont d'Urville has many common areas that are designed and equipped to meet all of your needs while preserving the intimacy of each passenger. A 140 m² reception area includes: A reception/concierge desk, An excursions desk, The ship's administrative services, The sales office, manned by our Guest Relations Officer, Our 50 m² boutique which sells clothing, jewellery, beauty products, postcards and various accessories, Toilets accessible to passengers with reduced mobility. A new hydraulic platform with adjustable height provides: Easier boarding than on any other cruise ship, Easier Zodiac embarkation and disembarkation for expeditions, Easier access to the sea for swimming and practising various water sports such as kayaking or paddle-boarding. A pool deck offering: A pool with a panoramic view, equipped with a counter-current swimming system, A pleasant solarium, An outdoor bar and lounge with armchairs and sofas. A 200 m² main lounge which can accommodate all of our passengers to share convivial moments and to host activities organised during the day or evening. Lastly, a theatre that seats 188, equipped with: The latest sound and lighting technology, A LED wall as the stage backdrop, for the projection of high-resolution images and videos. Please click the following links to read more about Ponant and the other Ponant



The Small Cruise Ship Collection

www.small-cruise-ships.com

01432 507 280 (within UK)

info@small-cruise-ships.com | small-cruise-ships.com



The Small Cruise Ship Collection

www.small-cruise-ships.com



small-cruise-ships.com

info@small-cruise-ships.com



cruise ships.



The Small Cruise Ship Collection

www.small-cruise-ships.com

01432 507 280 (within UK)

info@small-cruise-ships.com | small-cruise-ships.com

The Small Cruise Ship Collection

www.small-cruise-ships.com

small-cruise-ships.com

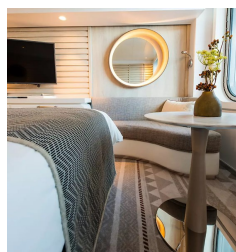
info@small-cruise-ships.com

INSIDE YOUR SHIP

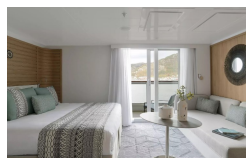


- Owner's Suite Deck 6
- Privilege Suites Deck 5-6
- Grand Deluxe Suites Deck 5-6
- Prestige Suites Deck 5-6
- Deluxe Suites Deck 5-6
- Prestige Cabins Deck 4-5-6
- Deluxe Cabins Deck 3

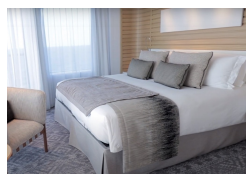
Deluxe Stateroom



Deluxe Suite



Grand Deluxe Suite



Owner's Suite



Prestige Stateroom Deck 4

Prestige Stateroom Deck 5

Prestige Stateroom Deck 6

Prestige Suite Deck 5

Prestige Suite Deck 6

Privilege Suite

The Small Cruise Ship Collection
www.small-cruise-ships.com

01432 507 280 (within UK)

info@small-cruise-ships.com | small-cruise-ships.com



The Small Cruise Ship Collection

www.small-cruise-ships.com



small-cruise-ships.com

info@small-cruise-ships.com

PRICING

03-Aug-2024 to 10-Aug-2024

| | |
|---------------------------|---------------|
| Privilege Suite | £14185 GBP pp |
| Prestige Stateroom Deck 5 | £6255 GBP pp |
| Deluxe Suite | £9375 GBP pp |
| Prestige Stateroom Deck 6 | £6630 GBP pp |
| Prestige Stateroom Deck 4 | £5948 GBP pp |
| Grand Deluxe Suite | £15615 GBP pp |
| Prestige Suite Deck 6 | £13494 GBP pp |
| Owner's Suite | £16421 GBP pp |
| Prestige Suite Deck 5 | £12812 GBP pp |
| Deluxe Stateroom | £5324 GBP pp |

ADDITIONAL CHARGES:

Port Taxes & Fees 520 AUD pp



The Small Cruise Ship Collection

www.small-cruise-ships.com

01432 507 280 (within UK)

info@small-cruise-ships.com | small-cruise-ships.com