



ICELAND & EASTERN GREENLAND ADVENTURE CRUISE

Experience the wild and fantastic landscapes of Iceland and East Greenland on our 13-day Iceland and Eastern Greenland cruise. Circumnavigate Iceland, the land of fire and ice, accompanied by breaching whales, and discover the phenomena of fjords, spectacular waterfalls and never-ending volcanic scenery. From northern Iceland, we head to Eastern Greenland, to explore regions in the northernmost part of the world. Encounter some of the most interesting indigenous cultures and ways of life in sparsely populated regions, as well as national parks, protected areas for wildlife - such as arctic hare and muskoxen - and the world's largest fjord system. On our return to Iceland, you can duck under the spray of spouting hot geysers and spot Atlantic puffins. Join us on board our boutique expedition ship for a tour of Iceland and a fascinating and varied part of Greenland.



ITINERARY

DAY 1 REYKJAVIK

In the centre of Iceland's sprawling capital city, the modern organ-pipe-shaped Hallgrímskirkja church dominates the top of town. Cosy bars, cafes and shops line the surrounding streets heated by geothermal waters. The regenerated harbour is home to a striking modern concert hall. Popular trips include to the Blue Lagoon, a geothermal spa near the village of Grindavík, and the Golden Circle tour taking in Gullfoss Waterfall and the mighty Strokkur geyser in Thingvellir National Park.

DAY 2 ISAFJORDUR

Arrive today in the charming, tiny fishing harbour of Ísafjörður. The village's touristic highlights include the Westfjord Heritage



Museum and The Museum House (Old Hospital). Located at the heart of the Westfjords peninsula, it's a great jumping-off point for exploration so journey by Zodiac to the island of Vigur – the pearl of the Western Fjords. The second-largest island in the fjord, measuring two kilometres by 400 metres, it's a significant seabird colony, which is home to arctic terns, puffins, black guillemots and eider ducks. As one of only two inhabited islands in the fjord, Vigur is also the site of a single farm, which has been in the same family for generations. During your time on the island, you might see Iceland's only windmill, the country's smallest post office and oldest boat, which was built more than 200 years ago and in regular use until relatively recently.

DAY 3 AT SEA

As we cruise to our next destination, spend your day at sea exploring and enjoying the ship's facilities. You can also spend some time learning about your destination from our knowledgeable onboard experts. Attend an informative lecture, indulge in a relaxing spa treatment, or get in a workout at the onboard gym.

DAY 4 ITTOQQORTOORMIIT

One of the most remote towns in the world, thick sea ice makes Ittoqqortoormiit inaccessible by ship for nine months of the year. Founded in 1925 by Danish explorer Ejnar Mikkelsen and a group of 80 or so Inuit, the town's 450 present-day residents are largely self-sufficient. Hunting and fishing at sea are the only ways that this community can survive. Although a small number of residents now also work service industry. Ittoqqortoormiit is also the gateway to the Scoresbysund fjord system; the world's largest fjord network with an area of just under 40,000 square kilometres.

DAY 5-6 SCORESBYSUND

Over the next few days, we'll explore the vast Scoresbysund fjord network. The imposing basalt mountains create a striking backdrop against the brilliant white ice floating in the mirror-like waters. The mountains offer protection from the Arctic winds, providing excellent shelter for an abundance of Greenland's iconic wildlife. We'll be hoping to spot muskoxen, Arctic foxes and mountain hares along the frozen shores. Birds also thrive in this delicate ecosystem. With the help of our expedition team, we'll be looking out for little auks, Atlantic puffins, fulmars, snowy owls, the Greenlandic gyrfalcon and great black-backed gulls. Seals and whales are also common sightings in the fjord waters.

DAY 7-8 KONG OSCAR FJORD

King Oscar Fjord forms the northern border of the Scoresby Sound. This seemingly endless maze of valleys eventually gives way to the open sea. The imposing mountains, deep waters and sparkling ice create the kind of dramatic and emotive landscape that photos just can't emulate. This other-worldly place is beautiful and imposingly hostile all at once. Whilst cruising through King Oscar Fjord, we'll observe the fascinating Berzelius Bjerg, a mountain with clear bands of coloured strata – formed millions of years ago when the mountains here were once part of the seabed.

DAY 9 AT SEA

As we cruise to our next destination, spend your day at sea exploring and enjoying the ship's facilities. You can also spend some time learning about your destination from our knowledgeable onboard experts. Attend an informative lecture, indulge in a relaxing spa treatment, or get in a workout at the onboard gym.



The Small Cruise Ship Collection

www.small-cruise-ships.com

small-cruise-ships.com

info@small-cruise-ships.com

DAY 10 SEYDISFJORDUR

Regarded as east Island's cultural hub, brightly painted wooden houses line Seyðisfjörður's port. With a lively arts scene disproportionate to its small size, Seyðisfjörður has attracted many writers and artists over the years and also hosts an annual summer arts festival. Surrounded by incredible nature, the Skálanes nature reserve is a short distance from the town. The area covered by the reserve is known for its diverse wildlife with over 47 species of bird and over 150 plant species. Reindeer are also seen here, with seals and porpoises frequently spotted along the shores.

DAY 11 HOFN

Southeast Iceland's staging post, Höfn is a small town perched on a narrow neck of land, and an ideal base for exploring the nearby Vatnajökull National Park. The town itself is well known for its lobster catch, particularly high-value species such as the Norway Lobster. The town hosts an annual Lobster Festival in celebration of its reputation as Iceland's Lobster capital. Vatnajökull National Park is Europe's largest and covers 14% of Iceland. This vast area encompasses massive ice caps, thundering waterfalls, glaciers, canyons, craters and volcanoes. The park's Jökulsárlón Lagoon is within easy reach of Höfn and is Iceland's deepest lake. Icebergs float on the surface of the water all year long, offering resting spots for passing seals.

DAY 12 HEIMAÆY

A small 13-kilometre square island off the south coast of Iceland, Heimaey's history has been surprisingly eventful. From the escapee 16th century Irish slaves to the reaches of the Ottoman Empire and subsequent pirate invasion, the island was a place of danger and terror until the mid 18th century. Once these events subsided, for 300 years the people of Heimaey

assumed that their days of action were a thing of the past. That was until 1973 when residents awoke to a devastating volcanic eruption. Fissures over a kilometre wide snaked through the town, the lava engulfing over 400 homes. Remarkably, only one person is thought to have died as a result of the eruption, with a quick rescue response ensuring that the 5,300 residents were swiftly evacuated to the safety of the mainland. Evidence of this recent geological activity can be seen just about everywhere on Heimaey and is the focus of the fascinating Eldheimar museum.

DAY 13 REYKJAVIK

In the centre of Iceland's sprawling capital city, the modern organ-pipe-shaped Hallgrímskirkja church dominates the top of town. Cosy bars, cafes and shops line the surrounding streets heated by geothermal waters. The regenerated harbour is home to a striking modern concert hall. Popular trips include to the Blue Lagoon, a geothermal spa near the village of Grindavík, and the Golden Circle tour taking in Gullfoss Waterfall and the mighty Strokkur geyser in Thingvellir National Park.

Please Note:

Itineraries are subject to change.



YOUR SHIP: VEGA

YOUR SHIP: Vega

VESSEL TYPE:

LENGTH:

PASSENGER CAPACITY:

BUILT/REFURBISHED:

Launched in 2022, this state of the art ship has been designed to journey to off the beaten path destinations and remote polar regions in style and comfort. The ship incorporates a PC5 ice-strengthened hull combined with extra-large stabilisers to make your journey as smooth as possible. Sophisticated Elegance. We know how important outdoor space is, so our spacious, relaxing public spaces provide wide open, unobstructed views throughout the ship. The destination will always be in view. Your Wellbeing. The safety & happiness of our guests is paramount to our 120-strong crew on board as well as our passionate expedition team who'll be serving up thrilling shore excursions and lasting memories. Cabin Types. Our 76 cabins including 6 suites have all the amenities you will need to feel comfortable including dressing gowns, hairdryers, personal safes and minibars. Our stylish cabins all have desks, a dressing area and comfy seating. En suite bathrooms all feature glass-enclosed rain showers. Wheelchair access Guests who use wheelchairs must bring their own, as we have only a small number of wheelchairs stored onboard for emergencies. To ensure ease of movement on the ship, wheelchairs and mobility aids must be no wider than 65cm. All mobility or medical

equipment brought on board must be capable of being carried safely and must be declared before sailing. To ensure that all guests can safely evacuate during an emergency, guests requiring a wheelchair can only be accommodated in our ADA-accessible cabins. We offer an Oceanview stateroom on Vega which is specifically designed to be completely ADA compliant and have a fully operable wheelchair-access wet unit. Vega has two lifts, serving every passenger deck apart from the Stargazing top deck, which is, therefore, more difficult to access, as are the Aft Marina and Swan's Nest forward observation platform. Also, we don't have special equipment to access the swimming pool, jacuzzi, or sauna. Otherwise, the ship is entirely at your disposal. Many of the expeditions ashore in remote places are by Zodiac. Boarding these boats and returning aboard can present challenges for wheelchair users, as can navigating uneven terrain. These challenges are by no means always insurmountable, though, and our highly experienced crew is trained to provide reliable advice and assistance. They will make every effort to ensure wheelchair-using guests enjoy a memorable experience at each destination. Our general guidance, however, is to recommend wheelchair users travel with a companion for their ease and enjoyment. If you prefer to remain aboard, our panoramic interiors and ample open decks ensure an immersive, intimate experience of your inspiring



The Small Cruise Ship Collection

www.small-cruise-ships.com



small-cruise-ships.com

info@small-cruise-ships.com



surroundings.



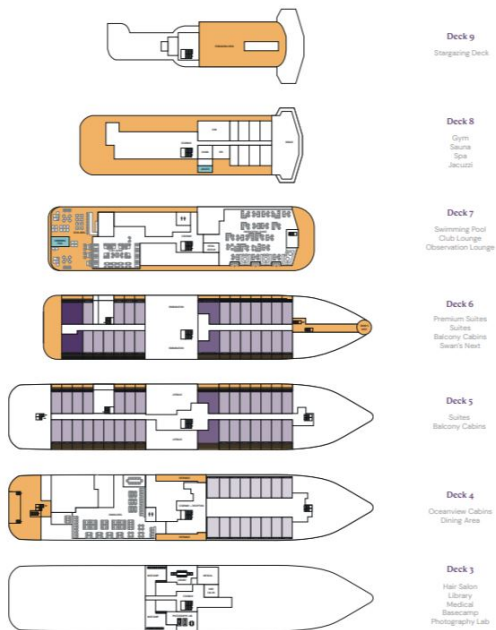
The Small Cruise Ship Collection

www.small-cruise-ships.com

small-cruise-ships.com

info@small-cruise-ships.com

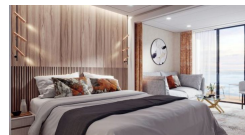
INSIDE YOUR SHIP



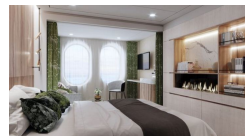
Balcony D5



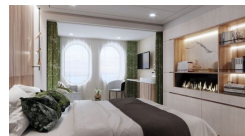
Balcony M5



Oceanview D4



Oceanview M4



Premium Suite



Suite





The Small Cruise
Ship Collection

www.small-cruise-ships.com

small-cruise-ships.com

info@small-cruise-ships.com

PRICING

07-Aug-2025 to 20-Aug-2025

Premium Suite	£20084 GBP pp
Oceanview M4	£10547 GBP pp
Balcony D5	£13046 GBP pp
Balcony M5	£13709 GBP pp
Suite	£18248 GBP pp
Oceanview D4	£10037 GBP pp



The Small Cruise
Ship Collection

www.small-cruise-ships.com

01432 507 280 (within UK)

info@small-cruise-ships.com | small-cruise-ships.com