



## The Small Cruise Ship Collection

www.small-cruise-ships.com



small-cruise-ships.com

info@small-cruise-ships.com

## HISTORIC CITIES OF THE BALTIC SEA - LUXURY CRUISE

PONANT invites you to discover the historical cities along the Baltic Sea. You will embark on Le Dumont-d'Urville for a 9-day cruise about the cultural wonders of the Hanseatic League. Departing from Stockholm, your ship will first head to Helsinki. Located on a peninsula surrounded by almost 300 islands, the verdant capital of Finland will charm you with its Art Nouveau architecture. You will visit Tallinn, emblematic city of the Hanseatic League, the large trading network that dominated the Baltic Sea for several centuries. Listed as UNESCO Heritage Site, this once opulent city still have remarkably well-preserved public buildings, merchant houses and warehouses. You will also discover Riga, capital of Latvia. A unique blend of different architectural styles, the old town will open itself up to you like the pages of a history book. Le Dumont-d'Urville will then sail to the Swedish island of Gotland and call at Visby, a site that was important for the Hanseatic League in the Baltic Sea around the 13th century. UNESCO Heritage Site, this once opulent city still has remarkably well-preserved ramparts, public buildings, merchant houses and warehouses. You will return to Sweden in Karlskrona. This city, whose history is intrinsically linked to the Swedish Navy, boasts exceptional UNESCO-listed architecture that is characteristic of late-17th-century European naval cities. Your ship will then call at Gdansk, famous for its amber stone and its shipyards. The former Hanseatic city will reveal some of its architectural treasures, in Gothic and Baroque styles, restored or rebuilt. You will set a course for the charming fishing village of Gudhjem. Located on the small Danish island of Bornholm, it is very popular among the Danes for its gentle way of life and its beautiful landscapes of rock formations. Your ship

will finally reach Copenhagen, where you can explore its canals and historic districts. \_Some departures may have a slightly modified itinerary. Please confirm departure and arrival cities with an Expedition



Specialist.\_

### ITINERARY

Day 1 STOCKHOLM

The capital of Sweden occupies an archipelago in the east of the country at the junction of Malar Lake and the Baltic sea. In Gamla stan, meaning "old town" in Swedish, you can stroll at



The Small Cruise Ship Collection

www.small-cruise-ships.com

01432 507 280 (within UK)

info@small-cruise-ships.com | small-cruise-ships.com



## The Small Cruise Ship Collection

[www.small-cruise-ships.com](http://www.small-cruise-ships.com)



[small-cruise-ships.com](http://small-cruise-ships.com)

[info@small-cruise-ships.com](mailto:info@small-cruise-ships.com)

your leisure in picturesque medieval streets until you reach the majestic Royal Palace. On the green island of Djurgården, you can visit several very different kinds of cultural centres: the Vasa museum is dedicated to a 17th century three-mast, the ecomuseum of Skansen presents traditional customs, and the ABBA museum is dedicated to the legendary pop group. For a fantastic, all-encompassing view of Stockholm, you can take a ride in SkyView, a glass-encased sphere gondola that takes you to the top of the world's largest building, the Ericsson Globe, a Stockholm landmark.

### Day 2 HELSINKI

Seated in the southern peninsula of Finland, Helsinki offers the buzz of a cosmopolitan city that has opted for both elegance and beauty. Explore its historical centre where the soft hues of neoclassical buildings are juxtaposed with spectacular modern constructions. The bustling Kallio district is teeming with boutiques and restaurants where you can taste some local specialities like graavilohi - a sweet, marinated, aromatic salmon dish. Keskuspuisto park, a stone's throw from the centre, is a good place to sit and unwind.

### Day 3 TALLINN

Opening onto the Baltic sea, to the far north of Estonia, the town of Tallin will win you over with the picturesque charm of its architecture. You can meander through its little streets in the heart of the medieval centre where its gothic town hall has been standing since 1404. The Kiek in de Kok tower, the Orthodox Alexander Nevski cathedral, or Toompea castle give visitors a

taste of this town's rich past. The city was particularly active during the medieval period, as is demonstrated by the very beautiful monuments from this period that are still visible. Don't hesitate to lose yourself in the heart of Tallinn, listed as a UNESCO World Heritage Site.

### Day 4 RIGA

At the place where East meets West on the edge of the Baltic Sea, Riga, the capital of Latvia, will charm you with its contrasts. Although it is one of the oldest cities in the Baltic states, with a unique atmosphere that is imbued with the memory of its medieval past, Riga is also tangibly dynamic and modern. As you stroll through its old town, you will enjoy its exceptional architecture, its cathedrals, the remains of old walls and the typical narrow streets. Nicknamed "the Paris of the North" in the 1930s, this cosmopolitan city boasts a rich heritage.

### Days 5 - 6 VISBY, GOTLAND

This old Hanseatic city lies to the west coast of Gotland, a Swedish island in the Baltic sea. Pass through the spectacular Visby fortifications and visit the old town, a UNESCO World Heritage site. You'll discover the grand Visby homes of rich merchants as well as the lovely low wooden houses in the little cobbled streets. Don't miss Saint Mary's cathedral with its octagonal steeples, as well as Powder tower along the fortifications. Make sure you stop over in one of the rose-adorned cafes; indeed roses abound in this town where you can taste one of the island's specialities, namely saffron pancakes with red fruit.



The Small Cruise Ship Collection

[www.small-cruise-ships.com](http://www.small-cruise-ships.com)

**01432 507 280** (within UK)

[info@small-cruise-ships.com](mailto:info@small-cruise-ships.com) | [small-cruise-ships.com](http://small-cruise-ships.com)





## The Small Cruise Ship Collection

[www.small-cruise-ships.com](http://www.small-cruise-ships.com)



[small-cruise-ships.com](http://small-cruise-ships.com)

[info@small-cruise-ships.com](mailto:info@small-cruise-ships.com)

### Day 7 KARLSKRONA

Discover Karlskrona on the southern coast of Sweden, between land and sea, spread over the small islands of the Blekinge archipelago. Its strategic position on the Baltic Sea made it the headquarters of the Swedish Royal Navy and its naval dockyard on the orders of King Karl XI of Sweden, in 1680. Constructed from nothing, the citadel has kept its architecture, whose coherence and conservation have today earned its listing as a UNESCO World Heritage Site. Its authentic colourful wooden houses facing the sea - which is never too far away - and its rich naval history give it an exquisite and unique charm. Do not miss this visit.

### Day 8 GDANSK

This ravishing city on the Baltic sea is nicknamed "the golden door of Poland", and you'll understand why when you see its beautiful Hanseatic architecture. You'll be charmed by the mouldings and gables that enhance the colourful façades of the houses. Along the Vistula Quays, you can take a pleasant stroll among the crafts shops. In elegant Mariacka street, the amber jewellers will most certainly tempt you into their boutiques. You can visit the church of Saint-Mary and its astronomic clock. Not far, the majestic Long Market square offers the famous Artus Court and the rich Gdansk History Museum.

### Day 9 GUDHJEM, BORNHOLM

Lying in the south-west of the Baltic Sea, the medieval village of

Gudhjem, on the island of Bornholm, is one of the most visited and most popular villages in Denmark. As you stroll along its picturesque streets, you will fall under the spell of its varied landscapes, its easy way of life, and the authenticity of this charming town with half-timbered houses topped with red roofs, in the Danish tradition. It is here, along these charming streets, that the first herring smokehouses were built in the mid-19th century, attracting all the region's fishermen. Tucked away in a gorgeous natural setting composed of rocky cliffs, dense forests and beaches of white sand, Gudhjem will provide an unforgettable interlude where time will seem to stand still.

### Day 10 COPENHAGEN

Connected to the far eastern side of Sealand island, a few kilometres away from the Swedish coasts, Copenhagen offers you the high colour of Scandinavian capitals. You can discover the city's riches that weaves through the canal networks through the historical districts of Christiansborg and Nyhavn. Many palaces provide an aperçu of Danish history. For eating, you can try out the smørrebrød, traditional danish sandwiches made with ham, cheese or smoked fish.

Please Note:

Itineraries are subject to change.



The Small Cruise Ship Collection

[www.small-cruise-ships.com](http://www.small-cruise-ships.com)

**01432 507 280** (within UK)

[info@small-cruise-ships.com](mailto:info@small-cruise-ships.com) | [small-cruise-ships.com](http://small-cruise-ships.com)

# The Small Cruise Ship Collection

[www.small-cruise-ships.com](http://www.small-cruise-ships.com)



[small-cruise-ships.com](http://small-cruise-ships.com)

[info@small-cruise-ships.com](mailto:info@small-cruise-ships.com)

## YOUR SHIP: LE CHAMPLAIN

**YOUR SHIP:** Le Champlain

**VESSEL TYPE:**

**LENGTH:**

**PASSENGER CAPACITY:**

**BUILT/REFURBISHED:**

Featuring innovative and environmentally-friendly equipment, elegantly designed cabins, spacious suites with large windows, and lounge areas that open onto the outside, this new limited-capacity yacht boasting just 92 cabins and suites will offer you a truly unique cruising experience. As the first ship in a new series, Le Champlain will embody the unique atmosphere that is the cruise line's hallmark: a subtle blend of refinement, intimacy and comfort. Aboard this ship that flies the French flag, you will experience the incomparable pleasure of an intimate cruise, with the possibility of exploring an ever-increasing range of destinations in an ethnic-chic ambiance with luxury service. Experience a luxurious setting where the accent is on authenticity and passion for travel. RESTAURANTS As it is an essential part of French culture, gastronomy will naturally have pride of place aboard this new ship. Through its two restaurants, Le Champlain will invite you on a journey to elegance and epicureanism. In a relaxed atmosphere, a first dining area located on Deck 3 and able to seat 70 will serve grilled meats daily, along with a variety of salads and desserts. To the back of Deck 4, you will find a 260 m<sup>2</sup> panoramic restaurant which can accommodate all of our passengers in a single sitting. Designed

differently to that on our other ships, this dining area, which opens onto the outside, will have a buffet of salads, desserts and cheeses at your disposal. Our discreet and attentive crew will provide table service for hot meals. PUBLIC AREAS Like Le Boreal and its sisterships, Le Champlain has many common areas that are designed and equipped to meet all of your needs while preserving the intimacy of each passenger. A 140 m<sup>2</sup> reception area includes: A reception/concierge desk, An excursions desk, The ship's administrative services, The sales office, manned by our Guest Relations Officer, Our 50 m<sup>2</sup> boutique which sells clothing, jewellery, beauty products, postcards and various accessories, Toilets accessible to passengers with reduced mobility. A new hydraulic platform with adjustable height provides: Easier boarding than on any other cruise ship, Easier Zodiac embarkation and disembarkation for expeditions, Easier access to the sea for swimming and practising various water sports such as kayaking or paddle-boarding. A pool deck offering: A pool with a panoramic view, equipped with a counter-current swimming system, A pleasant solarium, An outdoor bar and lounge with armchairs and sofas. A 200 m<sup>2</sup> main lounge which can accommodate all of our passengers to share convivial moments and to host activities organised during the day or evening. Lastly, a theatre that seats 188, equipped with: The latest sound and lighting technology, A LED wall as the stage backdrop, for the projection of high-resolution images and videos. Please click the following links to read more about Ponant and the other Ponant





## The Small Cruise Ship Collection

[www.small-cruise-ships.com](http://www.small-cruise-ships.com)



[small-cruise-ships.com](http://small-cruise-ships.com)

[info@small-cruise-ships.com](mailto:info@small-cruise-ships.com)



cruise ships.



The Small Cruise  
Ship Collection

[www.small-cruise-ships.com](http://www.small-cruise-ships.com)

**01432 507 280** (within UK)

[info@small-cruise-ships.com](mailto:info@small-cruise-ships.com) | [small-cruise-ships.com](http://small-cruise-ships.com)



# The Small Cruise Ship Collection

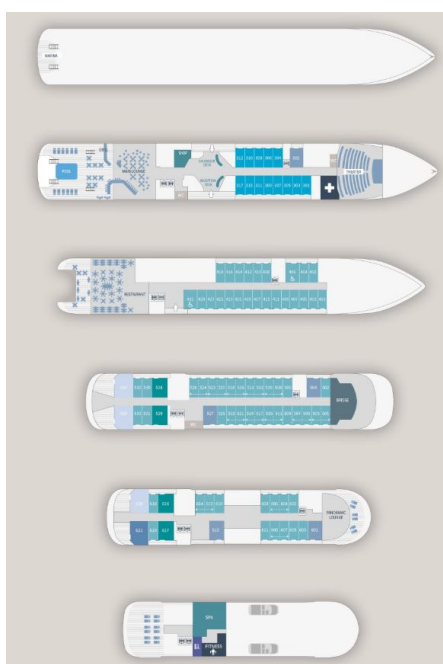
[www.small-cruise-ships.com](http://www.small-cruise-ships.com)



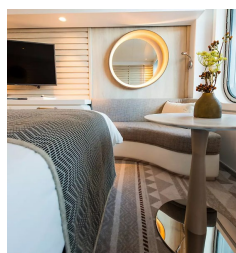
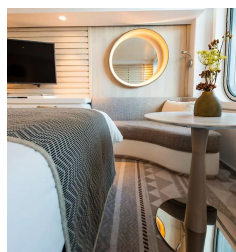
[small-cruise-ships.com](http://small-cruise-ships.com)

[info@small-cruise-ships.com](mailto:info@small-cruise-ships.com)

## INSIDE YOUR SHIP

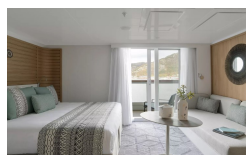
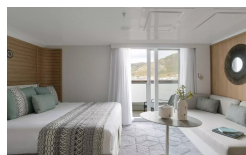


Deluxe Stateroom



Deluxe Stateroom■

Deluxe Suite



Deluxe Suite - waitlist

Grand Deluxe Suite

Owner's Suite

Prestige Stateroom Deck 4

Prestige Stateroom Deck 6

Prestige Suite Deck 5

Grand Deluxe Suite

Owner's Suite■

Prestige Stateroom Deck 5

Prestige Stateroom Deck 6■

Prestige Suite Deck 6



The Small Cruise Ship Collection

[www.small-cruise-ships.com](http://www.small-cruise-ships.com)

01432 507 280 (within UK)

[info@small-cruise-ships.com](mailto:info@small-cruise-ships.com) | [small-cruise-ships.com](http://small-cruise-ships.com)



## The Small Cruise Ship Collection

[www.small-cruise-ships.com](http://www.small-cruise-ships.com)



[small-cruise-ships.com](http://small-cruise-ships.com)

[info@small-cruise-ships.com](mailto:info@small-cruise-ships.com)

Privilege Suite

Privilege Suite



The Small Cruise  
Ship Collection

[www.small-cruise-ships.com](http://www.small-cruise-ships.com)

**01432 507 280** (within UK)

[info@small-cruise-ships.com](mailto:info@small-cruise-ships.com) | [small-cruise-ships.com](http://small-cruise-ships.com)





# The Small Cruise Ship Collection

[www.small-cruise-ships.com](http://www.small-cruise-ships.com)



[small-cruise-ships.com](http://small-cruise-ships.com)

[info@small-cruise-ships.com](mailto:info@small-cruise-ships.com)

## PRICING

### 02-Jul-2024 to 10-Jul-2024

Prestige Stateroom Deck 5	£7155 GBP pp
Prestige Stateroom Deck 6	£7581 GBP pp
Prestige Stateroom Deck 4	£6796 GBP pp
Deluxe Suite	£10717 GBP pp
Prestige Suite Deck 6	£15423 GBP pp
Deluxe Stateroom	£6084 GBP pp
Prestige Suite Deck 5	£14632 GBP pp
Privilege Suite	£16208 GBP pp
Owner's Suite	£18772 GBP pp
Grand Deluxe Suite	£17846 GBP pp

### 10-Jul-2024 to 18-Jul-2024

Deluxe Stateroom	£6084 GBP pp
Prestige Suite Deck 5	£14632 GBP pp
Deluxe Suite	£10717 GBP pp
Prestige Stateroom Deck 5	£7155 GBP pp
Grand Deluxe Suite	£17846 GBP pp
Prestige Stateroom Deck 6	£7581 GBP pp
Privilege Suite	£16208 GBP pp
Prestige Suite Deck 6	£15423 GBP pp
Owner's Suite	£18772 GBP pp
Prestige Stateroom Deck 4	£6796 GBP pp

### 18-Jul-2024 to 26-Jul-2024

Prestige Stateroom Deck 6	£8946 GBP pp
Owner's Suite	£21525 GBP pp
Grand Deluxe Suite	£19541 GBP pp
Prestige Suite Deck 5	£16233 GBP pp
Prestige Stateroom Deck 5	£8505 GBP pp
Prestige Stateroom Deck 4	£8138 GBP pp
Prestige Suite Deck 6	£17042 GBP pp
Deluxe Suite	£12180 GBP pp
Deluxe Stateroom	£7403 GBP pp
Privilege Suite	£17850 GBP pp



The Small Cruise Ship Collection

[www.small-cruise-ships.com](http://www.small-cruise-ships.com)

01432 507 280 (within UK)

[info@small-cruise-ships.com](mailto:info@small-cruise-ships.com) | [small-cruise-ships.com](http://small-cruise-ships.com)





# The Small Cruise Ship Collection

www.small-cruise-ships.com



small-cruise-ships.com

info@small-cruise-ships.com

## PRICING

### 10-Aug-2024 to 18-Aug-2024

Prestige Stateroom Deck 6	£6630 GBP pp
Prestige Suite Deck 6	£13494 GBP pp
Prestige Stateroom Deck 4	£5948 GBP pp
Owner's Suite	£16421 GBP pp
Prestige Stateroom Deck 5	£6255 GBP pp
Grand Deluxe Suite	£15615 GBP pp
Deluxe Stateroom	£5324 GBP pp
Privilege Suite	£14185 GBP pp
Deluxe Suite	£9375 GBP pp
Prestige Suite Deck 5	£12812 GBP pp

### 15-Apr-2025 to 23-Apr-2025

Grand Deluxe Suite	£19970 GBP pp
Prestige Stateroom Deck 6	£7650 GBP pp
Deluxe Suite - waitlist	£13104 GBP pp
Prestige Stateroom Deck 5	£7230 GBP pp
Deluxe Stateroom	£6150 GBP pp
Prestige Stateroom Deck 4	£6870 GBP pp
Owner's Suite	£25200 GBP pp
Privilege Suite	£16320 GBP pp
Prestige Suite Deck 6	£15540 GBP pp
Prestige Suite Deck 5	£14750 GBP pp

### 13-Aug-2025 to 20-Aug-2025

Prestige Stateroom Deck 6	£9350 GBP pp
Deluxe Suite	£13068 GBP pp
Prestige Suite Deck 5	£17722 GBP pp
Deluxe Stateroom	£21617 GBP pp
Prestige Stateroom Deck 4	£8430 GBP pp
Owner's Suite	£22621 GBP pp
Prestige Suite Deck 6	£18653 GBP pp
Privilege Suite	£19579 GBP pp
Prestige Stateroom Deck 5	£8846 GBP pp
Grand Deluxe Suite	£21523 GBP pp

### ADDITIONAL CHARGES:

Port Taxes & Fees 400 GBP pp



The Small Cruise Ship Collection

www.small-cruise-ships.com

01432 507 280 (within UK)

info@small-cruise-ships.com | small-cruise-ships.com