



GREENLAND EXPLORER - SMALL SHIP EXPEDITION CRUISE

An intense journey along the Greenlandic coast: Experience the impressive mountain world of the east coast of Greenland. The green South Greenland with its fascinating Viking history enchants on this journey as well as the famous and legendary Disko Bay with its magnificent ice scenery. The northern part of the west coast with its remote fishing villages also gives an insight into life in lesser known parts of the world.



ITINERARY

Day 1 Reykjavik

Our optional Air & Ground package provides a convenient arrival. Use your leisure time in Reykjavik to discover the unique charm of the world's northernmost capital and book one of our pre-programs. Or explore the sights of south and west Iceland on a self-drive road trip (prices upon request). The SEAVENTURE docks in Old Reykjavik Harbor in the heart of the city, a five-minute stroll from the main squares, shopping and dining. The ship departs in the evening.

Day 2 Day at Sea/Denmark Strait



Today we sail across the Denmark Strait towards Greenland, following the same maritime route used by Norse settlers more than 900 years ago. Enroute you can attend fascinating presentations by our Expedition Team members to prepare for your visit to Greenland. Or of course, you can choose to just relax and watch whales, dolphins and seabirds from the deck or from your cabin.

Day 3 Ammassalik Island

The island is characterized by several glaciers, jagged peaks, rivers, lakes and waterfalls. There are vast green valleys and deep fjords with newly calved icebergs dropping off the ice cap into the sea. Tasilaq, the largest town in East Greenland, is located on Ammassalik Island. With its population of approximately 2,000 people, the town is the gateway to explore East Greenland.

Day 4 Day at sea/ Prince Christian Sound

When conditions are favorable, we travel along the 70 mile (112 km) long Prince Christian Sound which connects the Labrador and Irminger Seas. In this narrow, often ice choked channel, we come so close to icebergs you can almost reach out and touch one. The force of Greenland's massive inland ice cap pushes glaciers towards the sea, where large chunks of ice break off and become floating icebergs.

Day 5 Qaqortoq

With 3.000 inhabitants, Qaqortoq is the largest settlement in South Greenland. In this charming town you can find lots of strikingly beautiful colonial buildings, dating from the establishment of the town in 1775. The area has a rich history, as it has been inhabited continuously since prehistoric times. You can still see traces of Thule and Norse cultures throughout the region.

Day 6 Qeqertarsuatsiat

Qeqertarsuatsiat is a small settlement with approx. 200 residents, mainly living from hunting and fishing. Visit the small mine and learn more about the extraction of precious stones.

Day 7 Nuuk

With 16,000 inhabitants Nuuk is both the capital and the biggest city of Greenland. It combines Arctic traditions with European urbanity. Visit the city sights on a walking tour that ends at the National Museum which exhibits the famous mummies of Qilakitsoq.

Day 8 Sisimiut

Sisimiut has a turbulent history, especially during the 18th century when the first Danish colony was destroyed by Dutch whalers who wanted to establish their own settlement. The Danes fought back and eventually recaptured Sisimiut after



several fierce battles in the 1730s. Heavy fighting between Dutch whalers and various European nations took place over the years. Because of its flourishing shrimp industry, Sisimiut is one of Greenland's most prosperous cities today.

Day 9 Ilulissat

In the morning we reach Ilulissat village in fabled Disko Bay. Ilulissat is located beside the Ilulissat Icefjord. Delight in the thunderous spectacle when icebergs break off from the glacier and plunge into the fjord. Sermeq Kujalleq is one of the most productive glaciers in the northern hemisphere.

Day 10 Disko Bay/Qeqertarsuaq

The small settlement of Qeqertarsuaq is located on the South Coast of Disko Island. In 1773 the first whaling base was founded there. Whaling has been of great importance to the town over the past two centuries. Hunting and fishing are still the primary occupations for the island's inhabitants.

Day 11 Kangerlussuaq

Discover Kangerlussuaq with our exciting shore excursions before continuing our cruise in the evening. An intense and extraordinary journey along Greenland's west coast awaits you on this leg.

Day 12 Attu

Just 200 people live in the small town of Attu, near Disko Bay. Use the day for a hike through the unique nature and, with a bit of luck, observe the local wildlife up close.

Day 13 Ilimanaq / Equip Glacier

On this day, one of the smallest settlements in Disko Bay awaits you in Ilimanaq with its 50 inhabitants. The idyllic village with its colorful houses and picturesque surroundings is still mainly inhabited by hunters and fishermen and can look back on a rich history. Learn more about this town on our guided hike (included). Afterwards, the journey continues towards the impressive Equip Glacier.

Day 14 Uummannaq / Ikerasak

We are about 311 miles (500 km) North of the Arctic Circle. Uummannaq's landmark is the heart-shaped mountain of the same name, at the foot of which nestle numerous colorful houses, winding paths, and countless sled dogs. The small town of Ikerasak, with a population of just under 230, is located near Uummannaq, which is considered one of the most beautiful towns in Greenland. Weather permitting, we will go ashore and explore the town on a city walk (included).

Day 15 Karrat Fjord/ Nuugaatsiaq

In the morning, we drive through the Karrat Fjord. With a bit of



The Small Cruise Ship Collection

www.small-cruise-ships.com

small-cruise-ships.com

info@small-cruise-ships.com

luck, you can see icebergs calving as we drive through the fjord landscape - an impressive and breathtaking experience. In the afternoon, we anchor in front of Nuugaatsiaq, a place with a tragic history: in 2017, the village was hit by a big tsunami. The place has not been inhabited since then. If weather permits, you can join a hike and participate in a zodiac cruise (both included).

Day 16 Kangerluk/ Aasiaat

On this day, we visit the smallest and the largest town on our trip. With just 11 inhabitants, Kangerluk is the smallest town we visit. Aasiaat is the heart of an archipelago of low-lying islands. What Aasiaat lacks in vertical height, it makes up for with its huge coastline. In both settlements we will offer guided hikes (included).

Day 17 Ittileq

Many years ago, the town we are visiting today, was a fishing and trading town. Nowadays there are only around 100 inhabitants in the picturesque fishing village. Explore the town on our guided hike (included).

Day 18 Kangerlussuaq

We are back in Kangerlussuaq in the early morning. Now it is time to say goodbye to the SEAVENTURE. Our charter flight will take you back from Greenland to Iceland in the early evening. Take a look at our Air & Ground package or this tour to enjoy a

comfortable journey home. Please note: Please contact your agent regarding flight arrival time from Kangerlussuaq before you book your return flight from Keflavik.

Please Note:

All routes and excursions are provisional and subject to change.
All Zodiac excursions are weather dependent.



The Small Cruise Ship Collection

www.small-cruise-ships.com

small-cruise-ships.com

info@small-cruise-ships.com

YOUR SHIP: SEAVENTURE

YOUR SHIP: Seaventure

VESSEL TYPE:

LENGTH:

PASSENGER CAPACITY:

BUILT/REFURBISHED:

A WORLD-CLASS SMALL SHIP EXPERIENCE Seaventure features a 1-A Super ice class rating -- the highest ice class awarded to passenger vessels. This means that we will be able to explore coves, bays, and channels that would previously have been forbidden to us. The ship also offers a host of new activities. There's a sauna, a fitness center, a custom-built citizen science lab, and heated saltwater pool. There is more storage space, which is important because it means we can carry more equipment, so that more of our guests can participate in activities like kayaking, snowshoeing, and camping. The common areas are larger and beautifully appointed, and the ship has two. Ship Facilities: Two Elevators serving all passenger decks Library with computers Fitness Center and Sauna Heated saltwater swimming pool Citizen Science Laboratory All Staterooms Feature: Exterior views Sitting area with chairs or sofa and table Complimentary Mini-Bar Flat Screen TV Telephone Safe to store your valuables Independent temperature controls Luxury toiletries Hair dryer





The Small Cruise Ship Collection

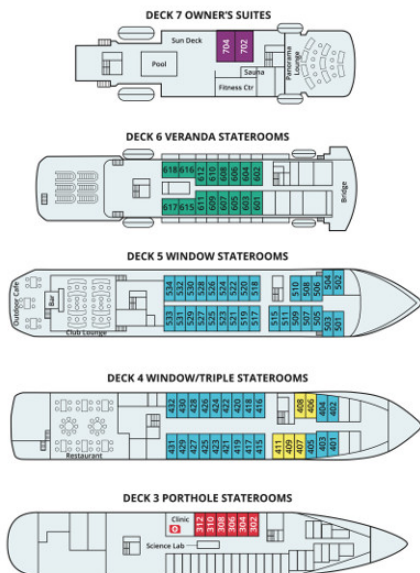
www.small-cruise-ships.com

small-cruise-ships.com

info@small-cruise-ships.com

INSIDE YOUR SHIP

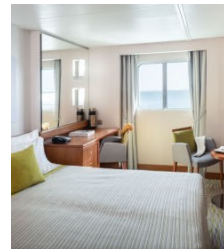
MS SEAVENTURE



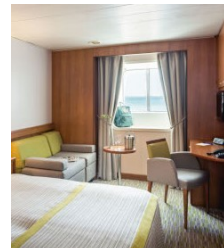
Category 1



Category 2



Category 3



Category 4



Category 5

Category 6



The Small Cruise Ship Collection

www.small-cruise-ships.com

01432 507 280 (within UK)

info@small-cruise-ships.com | small-cruise-ships.com



The Small Cruise Ship Collection

www.small-cruise-ships.com

small-cruise-ships.com

info@small-cruise-ships.com

PRICING

19-Jul-2024 to 05-Aug-2024

Category 1	£10013 GBP pp
Category 2	£11340 GBP pp
Category 7	£21266 GBP pp
Category 3	£12402 GBP pp
Category 6	£18489 GBP pp
Category 4	£13465 GBP pp
Category 5	£14532 GBP pp

29-Jul-2024 to 15-Aug-2024

Category 2	£11340 GBP pp
Category 5	£14532 GBP pp
Category 6	£18489 GBP pp
Category 3	£12402 GBP pp
Category 7	£21266 GBP pp
Category 1	£10013 GBP pp
Category 4	£13465 GBP pp



The Small Cruise Ship Collection

www.small-cruise-ships.com

01432 507 280 (within UK)

info@small-cruise-ships.com | small-cruise-ships.com