



The Small Cruise Ship Collection

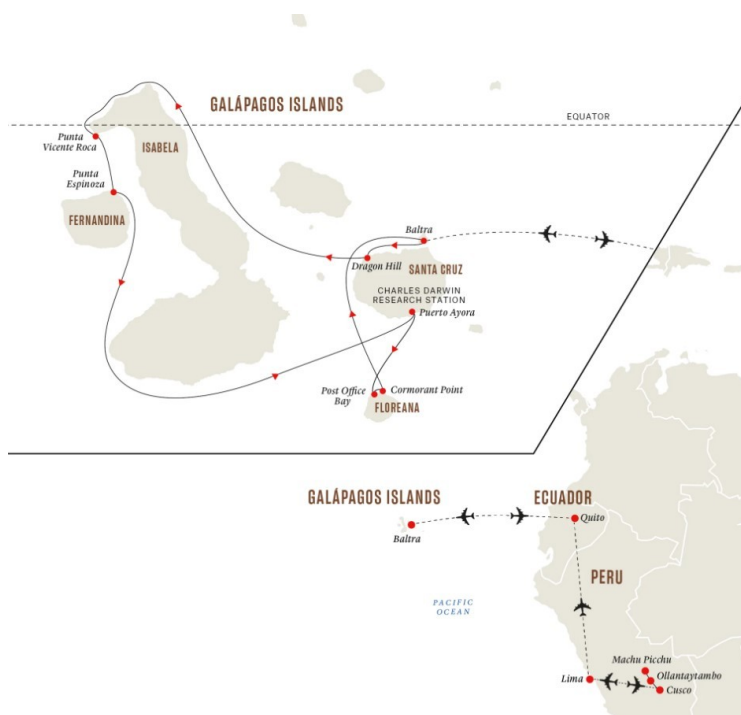
www.small-cruise-ships.com

small-cruise-ships.com

info@small-cruise-ships.com

GALÁPAGOS ISLANDS — ICONIC WILDLIFE & SUBLIME SCENERY PLUS MACHU PICCHU

South America land adventure The first part of our adventure takes place on land. Setting off from Lima, Peru's vibrant capital, we'll fly to Cusco, the ancient centre of the Inca empire, and discover its many cultural and architectural wonders. Next, we travel up the Sacred Valley on a luxury train to the incredible mountain citadel of Machu Picchu before heading back to Cusco and then flying to charming Quito – the 'City of Eternal Spring'. Darwin's islands of evolution After exploring Quito's historic centre and visiting the Equator, we'll head to the Galápagos Islands for an unforgettable sea adventure. Your expedition cruise begins after a flight from Quito to Baltra Island in Galápagos for an incredible sea adventure. In the Galápagos Islands, you'll visit the isles of Isabela, Floreana, Fernandina and Santa Cruz islands, each a unique illustration of evolution in action. Experience an array of ecosystems within picturesque landscapes, and see famed wildlife such as marine iguanas, giant tortoises, Nazca Boobies and Darwin's iconic finches. Your ship, MS Santa Cruz II, is one of the few vessels operating in Galápagos that comes equipped with a full range of exploration tools, including panga boats, kayaks, snorkelling gear, stand-up paddleboards and even a glass-bottom boat.



ITINERARY

DAY 1 Your land adventure begins

Start your adventure in ancient and modern Lima Welcome to Peru, one of the most fascinating countries in South America! If you have time after your arrival in Lima before settling in at your hotel for an overnight stay, we suggest you wander historical centre, which is packed with elegant Spanish colonial architecture, is a UNESCO World Heritage Site. Or why not walk along the oceanfront boardwalk in the upmarket Miraflores district. Here, you'll find many restaurants and cafés, as well as shops if you need to purchase anything ahead of your



The Small Cruise Ship Collection

www.small-cruise-ships.com

01432 507 280 (within UK)

info@small-cruise-ships.com | small-cruise-ships.com



The Small Cruise Ship Collection

www.small-cruise-ships.com

small-cruise-ships.com

info@small-cruise-ships.com

adventure. Lima is considered the food capital of Latin America, so be sure to try local dishes like ceviche, which is raw fish marinated in lime juice with onion and chilli.

DAY 2 City of the Incas and a cultural gem

Explore the ancient seat of the Inca Empire In the morning, you'll take a flight to Cusco, the ancient seat of the Inca Empire. A local guide will take you to check in at your hotel, before inviting you on a guided tour of this enigmatic city. You'll see impressive Inca structures contrasted with ornate buildings from Spanish colonial times. Visit the 15th century ceremonial compound of Sacsayhuaman, or admire the architecture of the Spanish Santo Domingo church, a convent built on the ruins of Koricancha, the Inca Sun Temple. After your tour of the highlights of this cultural and architectural gem, we'll return to the hotel for dinner.

DAY 3 Back in time to a lost world

Discover the lost city of the Incas An early morning transfer will take you to Ollantaytambo, in the Sacred Valley, from where you'll catch a train along the narrow-gauge line to Machu Picchu, passing through stunning highland scenery along the way. After around two hours, we'll stop at the small town of Aguas Calientes and take the short bus ride to Machu Picchu – the so-called Lost City of the Incas. You'll enjoy a guided tour of this once-hidden settlement, marvelling at the stonewalls, terraces and ramps that are carved into the mountain. You'll love the peaceful atmosphere of Machu Picchu as you gaze at the lowland jungle from this city in the clouds. After lunch, we'll return to Cusco where you'll enjoy your final night at the hotel.

DAY 4 Quito – city of eternal spring

Discover the vibrant city of Quito The day begins with breakfast at your hotel. We'll then drive to the airport in Cusco for the

morning flight via Lima to Ecuador. You'll arrive in Quito in the afternoon. Your journey begins on the Equator in the lush Andean foothills. At 9,350 feet, Quito is the second-highest capital city in the world, and its main draw is the exquisite Old Town which was founded on an ancient Inca settlement. A UNESCO World Heritage site, it's packed with well-preserved colonial architecture as evidenced in colourful plazas, magnificent churches and handsome monuments. Settle into your hotel, then head out to explore.

DAY 5 Visit historic Quito

Straddle the Equator at the Middle of the World City Today you'll enjoy a guided tour of Quito's remarkable Old Town – one of the largest and best-preserved colonial-era quarters in South America. Wander through cobblestone streets as you admire the architecture – and sample some delicious chocolate made from finest Ecuadorian cacao along the way. Next, you'll head to the iconic 'Middle of the World City', located around 16 miles north of Quito. After lunch, you'll visit the famous monument that delineates the imaginary line of the Equator. Have your camera ready to capture the moment you stand with one foot in each hemisphere.

DAY 6 Your cruise begins

Get ready to explore the spectacular Galápagos Islands After breakfast, a short flight will take you to Baltra Island in the spectacular Galápagos archipelago. A transfer brings you straight to the port where your comfortable expedition ship MS Santa Cruz II awaits. In the afternoon we'll begin our exploration of the Galápagos Islands following the north shore of Santa Cruz towards the fascinating landscapes of Cerro Dragón – Dragon Hill – where we'll land. The first part of the walk here passes by a brackish lagoon that's frequented by shorebirds and American



The Small Cruise Ship Collection

www.small-cruise-ships.com

01432 507 280 (within UK)

info@small-cruise-ships.com | small-cruise-ships.com



The Small Cruise Ship Collection

www.small-cruise-ships.com

small-cruise-ships.com

info@small-cruise-ships.com

Flamingos. Further inland, the trail offers a beautiful view of the bay and the western islands of the archipelago, as well as a chance to get a first look at some land iguanas.

DAY 7 Wildlife-rich Isabela and Fernandina

Scan the coastline and seas for iconic species You'll start your day at Punta Vicente Roca, on the north-western tip of Isabela Island. After breakfast, we'll explore the coast by panga boat, learning about the dramatic geology of the area from your naturalist guides. This site is a nesting place for several bird species, so look out for Flightless Cormorants, Galápagos Penguins, and boobies. Weather permitting, you'll get to snorkel alongside the cliffs, where you might find green sea turtles, oceanic sun fish, and fur seals. In the afternoon, we'll explore Fernandina, an island with a unique ecology and a big population of marine iguanas. Scan the coast for sea lions, Sally Lightfoot crabs, hawks and penguins.

DAY 8 Darwin's Santa Cruz

Meet the famous giant tortoises of Galápagos Today, you'll explore Santa Cruz Island. In the morning, we'll disembark at Puerto Ayora to visit the Charles Darwin Research Station. A giant tortoise breeding centre, here you can see recently hatched tortoises and Darwin's famous finches – the birds he used as a basis for his theory of evolution by natural selection. There's also an impressive forest of prickly pear cacti that's home to many land birds. Enjoy a cooler climate over lunch in the lush highlands, where giant tortoises shuffle about munching on grass and wallowing in pools. You'll have time for another activity, including mountain biking or visiting a sugar plantation.

DAY 9 Picturesque Floreana

Discover Galápagos history and underwater wildlife After breakfast, you'll enjoy a panga boat ride among the channels on Floreana's north shore, before taking in the incredible views of the island from Baroness Cove. Later on, we'll land at Post Office Bay to visit the historic barrel that has served as a post office in the archipelago for over two centuries. After lunch, you'll explore the wonders around Champion Islet in a panga boat or aboard our glass-bottom boat. Here, you can snorkel in one of the best spots in the archipelago. From there, it's onwards to Cormorant Point, where we'll take a walk from an olivine-crystal beach to a brackish lagoon, where you can commonly see American Flamingos, Pintail Ducks and more.

DAY 10 Back to Baltra

Your adventure comes to an end As your expedition cruise comes to a close, it's time to bid farewell to the wildlife and scenery of one of the world's most incredible nature destinations. We'll also say farewell to our wonderful crew and naturalist guides as we disembark at Baltra Island. A transfer will take you to the airport in Baltra for your flight to Quito to connect to your international flight, or if you prefer, continue to Guayaquil for another adventure. To explore more of Ecuador, why not extend your stay and join one of our optional Post-Programmes.

Please Note:

Itineraries are subject to change.



The Small Cruise Ship Collection

www.small-cruise-ships.com

01432 507 280 (within UK)

info@small-cruise-ships.com | small-cruise-ships.com



The Small Cruise Ship Collection

www.small-cruise-ships.com



small-cruise-ships.com

info@small-cruise-ships.com

YOUR SHIP: SANTA CRUZ II

YOUR SHIP:	Santa Cruz II
VESSEL TYPE:	Motor Yacht
LENGTH:	72m
PASSENGER CAPACITY:	90
BUILT/REFURBISHED:	2002 / 2015

From top to bottom, the Santa Cruz II features ample, indulgent spaces. Modern, generous social areas laid out with choice contemporary materials feature prominently on four of its five decks. With an intelligent layout, including wide hallways and broad stairwells, guests will immediately know their way around. From dining areas indoors and out, the gymnasium and Jacuzzis to the elegant bar and lounge, not to forget the well-stocked library, the ship is designed to please with sophisticated simplicity. Luxury ratios of crew and guides to passengers guarantee quality individual attention. Facilities: · Bar-Lounge-Restaurant· Al fresco dining-BBQ· Gift shop· Gym· 24h Coffee Station (freecoffee, tea, and water)· Satellite telephone· WiFi hotspot (intermittent/low bandwidth)· PA system· Snorkelling equipment· Hair dryer· Ipad/MP3 docking station· Safe deposit box (in cabin)· Hot tub (2)· Reading room and naturalhistory library· Multiple purpose room· Air conditioned throughout· Wetsuit rental· Glass bottom boat· Kayaks Photo shows Santa Cruz which is used for 2015 Galapagos cruises - Santa Cruz II will be used for 2016.



The Small Cruise Ship Collection

www.small-cruise-ships.com

01432 507 280 (within UK)

info@small-cruise-ships.com | small-cruise-ships.com



The Small Cruise
Ship Collection

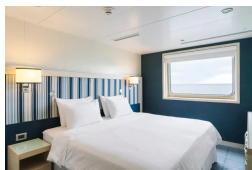
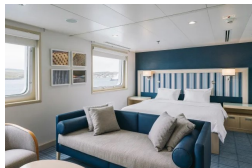
www.small-cruise-ships.com

small-cruise-ships.com

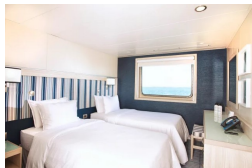
info@small-cruise-ships.com

INSIDE YOUR SHIP

Darwin Suite - Panorama deck Explorer cabin - Expedition deck



Explorer cabin - Horizon deck Explorer cabin - Panorama deck



The Small Cruise
Ship Collection

www.small-cruise-ships.com

01432 507 280 (within UK)

info@small-cruise-ships.com | small-cruise-ships.com



The Small Cruise Ship Collection

www.small-cruise-ships.com

small-cruise-ships.com

info@small-cruise-ships.com

PRICING

25-May-2024 to 02-Jun-2024

Darwin Suite - Panorama deck	£6783 GBP pp
Explorer cabin - Expedition deck	£5902 GBP pp
Explorer family cabin - Horizon deck	£6068 GBP pp
Explorer cabin - Panorama deck	£6068 GBP pp
Explorer cabin - Horizon deck	£5735 GBP pp

08-Jun-2024 to 16-Jun-2024

Explorer cabin - Horizon deck	£5735 GBP pp
Explorer cabin - Panorama deck	£6068 GBP pp
Explorer family cabin - Horizon deck	£6068 GBP pp
Darwin Suite - Panorama deck	£6783 GBP pp
Explorer cabin - Expedition deck	£5902 GBP pp

22-Jun-2024 to 30-Jun-2024

Explorer cabin - Horizon deck	£5735 GBP pp
Explorer cabin - Expedition deck	£5902 GBP pp
Explorer family cabin - Horizon deck	£6068 GBP pp
Explorer cabin - Panorama deck	£6068 GBP pp
Darwin Suite - Panorama deck	£6783 GBP pp

06-Jul-2024 to 14-Jul-2024

Explorer family cabin - Horizon deck	£6068 GBP pp
Darwin Suite - Panorama deck	£6783 GBP pp
Explorer cabin - Panorama deck	£6068 GBP pp
Explorer cabin - Expedition deck	£5902 GBP pp
Explorer cabin - Horizon deck	£5735 GBP pp

20-Jul-2024 to 28-Jul-2024

Explorer cabin - Expedition deck	£5902 GBP pp
Explorer cabin - Horizon deck	£5735 GBP pp
Darwin Suite - Panorama deck	£6783 GBP pp
Explorer cabin - Panorama deck	£6068 GBP pp
Explorer family cabin - Horizon deck	£6068 GBP pp

03-Aug-2024 to 11-Aug-2024

Explorer family cabin - Horizon deck	£6068 GBP pp
Darwin Suite - Panorama deck	£6783 GBP pp
Explorer cabin - Panorama deck	£6068 GBP pp
Explorer cabin - Horizon deck	£5735 GBP pp
Explorer cabin - Expedition deck	£5902 GBP pp

17-Aug-2024 to 25-Aug-2024



The Small Cruise Ship Collection

www.small-cruise-ships.com

01432 507 280 (within UK)

info@small-cruise-ships.com | small-cruise-ships.com



The Small Cruise Ship Collection

www.small-cruise-ships.com



small-cruise-ships.com

info@small-cruise-ships.com

Explorer cabin - Panorama deck	£6068 GBP pp
Darwin Suite - Panorama deck	£6783 GBP pp
Explorer family cabin - Horizon deck	£6068 GBP pp
Explorer cabin - Horizon deck	£5735 GBP pp
Explorer cabin - Expedition deck	£5902 GBP pp



The Small Cruise Ship Collection

www.small-cruise-ships.com

01432 507 280 (within UK)

info@small-cruise-ships.com | small-cruise-ships.com



The Small Cruise Ship Collection

www.small-cruise-ships.com

small-cruise-ships.com

info@small-cruise-ships.com

PRICING

31-Aug-2024 to 08-Sep-2024

Explorer cabin - Expedition deck	£5839 GBP pp
Explorer cabin - Horizon deck	£5676 GBP pp
Darwin Suite - Panorama deck	£6698 GBP pp
Explorer cabin - Panorama deck	£6001 GBP pp
Explorer family cabin - Horizon deck	£6001 GBP pp

14-Sep-2024 to 22-Sep-2024

Explorer cabin - Expedition deck	£5839 GBP pp
Explorer family cabin - Horizon deck	£6001 GBP pp
Explorer cabin - Panorama deck	£6001 GBP pp
Darwin Suite - Panorama deck	£6698 GBP pp
Explorer cabin - Horizon deck	£5676 GBP pp

28-Sep-2024 to 06-Oct-2024

Explorer cabin - Panorama deck	£6001 GBP pp
Explorer cabin - Horizon deck	£5676 GBP pp
Darwin Suite - Panorama deck	£6698 GBP pp
Explorer family cabin - Horizon deck	£6001 GBP pp
Explorer cabin - Expedition deck	£5839 GBP pp

12-Oct-2024 to 20-Oct-2024

Explorer cabin - Expedition deck	£5839 GBP pp
Explorer cabin - Horizon deck	£5676 GBP pp
Explorer cabin - Panorama deck	£6001 GBP pp
Explorer family cabin - Horizon deck	£6001 GBP pp
Darwin Suite - Panorama deck	£6698 GBP pp

26-Oct-2024 to 03-Nov-2024

Explorer cabin - Horizon deck	£5676 GBP pp
Explorer family cabin - Horizon deck	£6001 GBP pp
Darwin Suite - Panorama deck	£6698 GBP pp
Explorer cabin - Expedition deck	£5839 GBP pp
Explorer cabin - Panorama deck	£6001 GBP pp

09-Nov-2024 to 17-Nov-2024

Explorer cabin - Panorama deck	£6001 GBP pp
Explorer cabin - Expedition deck	£5839 GBP pp
Explorer family cabin - Horizon deck	£6001 GBP pp
Darwin Suite - Panorama deck	£6698 GBP pp
Explorer cabin - Horizon deck	£5676 GBP pp

23-Nov-2024 to 01-Dec-2024



The Small Cruise Ship Collection

www.small-cruise-ships.com



small-cruise-ships.com

info@small-cruise-ships.com

Explorer cabin - Panorama deck	£6001 GBP pp
Darwin Suite - Panorama deck	£6698 GBP pp
Explorer cabin - Expedition deck	£5839 GBP pp
Explorer family cabin - Horizon deck	£6001 GBP pp
Explorer cabin - Horizon deck	£5676 GBP pp



The Small Cruise
Ship Collection

www.small-cruise-ships.com

01432 507 280 (within UK)

info@small-cruise-ships.com | small-cruise-ships.com



The Small Cruise Ship Collection

www.small-cruise-ships.com

small-cruise-ships.com

info@small-cruise-ships.com

PRICING

07-Dec-2024 to 15-Dec-2024

Explorer cabin - Panorama deck	£6001 GBP pp
Explorer family cabin - Horizon deck	£6001 GBP pp
Explorer cabin - Expedition deck	£5839 GBP pp
Explorer cabin - Horizon deck	£5676 GBP pp
Darwin Suite - Panorama deck	£6698 GBP pp

21-Dec-2024 to 29-Dec-2024

Explorer cabin - Horizon deck	£5950 GBP pp
Explorer family cabin - Horizon deck	£6314 GBP pp
Darwin Suite - Panorama deck	£7092 GBP pp
Explorer cabin - Panorama deck	£6314 GBP pp
Explorer cabin - Expedition deck	£6132 GBP pp

04-Jan-2025 to 12-Jan-2025

Explorer cabin - Horizon deck	£5676 GBP pp
Explorer family cabin - Horizon deck	£6001 GBP pp
Darwin Suite - Panorama deck	£6698 GBP pp
Explorer cabin - Panorama deck	£6001 GBP pp
Explorer cabin - Expedition deck	£5839 GBP pp

18-Jan-2025 to 26-Jan-2025

Explorer cabin - Horizon deck	£5676 GBP pp
Explorer family cabin - Horizon deck	£6001 GBP pp
Darwin Suite - Panorama deck	£6698 GBP pp
Explorer cabin - Panorama deck	£6001 GBP pp
Explorer cabin - Expedition deck	£5839 GBP pp

01-Feb-2025 to 09-Feb-2025

Explorer cabin - Expedition deck	£5839 GBP pp
Explorer cabin - Panorama deck	£6001 GBP pp
Explorer family cabin - Horizon deck	£6001 GBP pp
Explorer cabin - Horizon deck	£5676 GBP pp
Darwin Suite - Panorama deck	£6698 GBP pp

15-Feb-2025 to 23-Feb-2025

Explorer cabin - Horizon deck	£5676 GBP pp
Explorer cabin - Expedition deck	£5839 GBP pp
Explorer cabin - Panorama deck	£6001 GBP pp
Darwin Suite - Panorama deck	£6698 GBP pp
Explorer family cabin - Horizon deck	£6001 GBP pp

01-Mar-2025 to 09-Mar-2025



The Small Cruise Ship Collection

www.small-cruise-ships.com

01432 507 280 (within UK)

info@small-cruise-ships.com | small-cruise-ships.com



The Small Cruise Ship Collection

www.small-cruise-ships.com



small-cruise-ships.com

info@small-cruise-ships.com

Explorer family cabin - Horizon deck

£6001 GBP pp

Explorer cabin - Expedition deck

£5839 GBP pp

Explorer cabin - Panorama deck

£6001 GBP pp

Darwin Suite - Panorama deck

£6698 GBP pp

Explorer cabin - Horizon deck

£5676 GBP pp



The Small Cruise Ship Collection

www.small-cruise-ships.com

01432 507 280 (within UK)

info@small-cruise-ships.com | small-cruise-ships.com



The Small Cruise
Ship Collection

www.small-cruise-ships.com

small-cruise-ships.com

info@small-cruise-ships.com

PRICING

15-Mar-2025 to 23-Mar-2025

Explorer cabin - Expedition deck	£5839 GBP pp
Explorer cabin - Horizon deck	£5676 GBP pp
Explorer family cabin - Horizon deck	£6001 GBP pp
Darwin Suite - Panorama deck	£6698 GBP pp
Explorer cabin - Panorama deck	£6001 GBP pp



The Small Cruise
Ship Collection

www.small-cruise-ships.com

01432 507 280 (within UK)

info@small-cruise-ships.com | small-cruise-ships.com