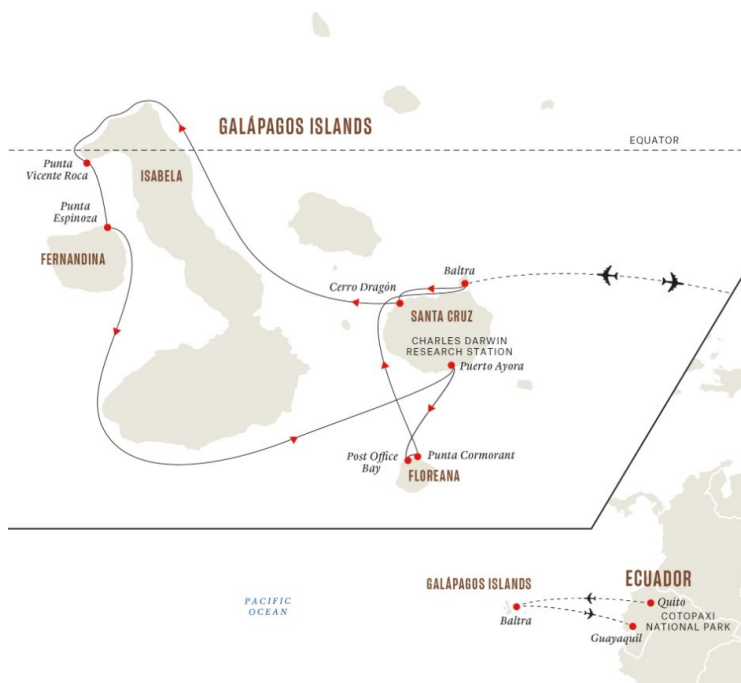




## GALÁPAGOS ISLANDS EXPEDITION CRUISE - ICONIC WILDLIFE & SUBLIME SCENERY

Beautiful Quito and volcano adventure Begin your adventure with two nights at a hotel in Quito, one of South America's most charming capitals. This World Heritage city of graceful Spanish-era architecture is packed with cosy restaurants and small artisanal shops. From here we'll journey to an active volcano and go on a nature walk in stunning surroundings, stopping to pay a visit to a vibrant traditional open-air market. Darwin's islands of evolution The Galápagos Islands are famed for their association with the evolutionary theorist Charles Darwin. Our western itinerary calls at Isabela and Floreana, two of the four islands visited by the famous naturalist, at the volcanic island of Fernandina, and the centrally located Santa Cruz Island. The landings take in a wide array of ecosystems, picturesque landscapes, and offer great opportunities for seeing wildlife such as sea lions, turtles, marine iguanas, giant tortoises, flamingos, Nazca and Red-footed Boobies, and iconic Darwin's Finches. Your expedition ship – MS Santa Cruz II MS Santa Cruz II's crafted itineraries give you some of the best island coverage and wildlife viewing opportunities in the Galápagos. Many excursions take place at exclusive visitor sites, meaning we'll often have entire areas to ourselves. Having multiple naturalist guides aboard Santa Cruz II also means you'll be able to choose from a wider range of activities each day. Your ship is also one of the few vessels operating in Galápagos that comes equipped with a full range of exploration tools, including dinghies, kayaks, snorkelling gear and paddleboards. There's even a glass-bottom boat. Of course, safety and sustainability are paramount throughout your cruise, and there's a 24-hour Medical Officer onboard at all times.



### ITINERARY

**DAY 1** Arrive in the city of eternal spring, get your bearings and relax after your journey.

Your journey of discovery begins on the equator in the lush Andean foothills. At 9,350 ft, Quito is the second-highest capital city in the world, and its main draw is the exquisite Old Town which was founded on an ancient Inca settlement. A UNESCO World Heritage site, it's packed with well-preserved colonial architecture, including colourful plazas, magnificent churches



## The Small Cruise Ship Collection

[www.small-cruise-ships.com](http://www.small-cruise-ships.com)

[small-cruise-ships.com](http://small-cruise-ships.com)

[info@small-cruise-ships.com](mailto:info@small-cruise-ships.com)

and handsome monuments. If you have enough time in the evening, make sure to visit the Calle La Ronda, an ancient pedestrianised street with links to the poets and artists who've lived here. It's lined with shops and cafes, and there are many handicrafts available to buy. Pre-Programmes Why not experience another highlight of South America and discover the lost civilisation of the Incas, including the breathtaking mountain stronghold of Machu Picchu. This optional 4-day Pre-Programme starts in Lima and ends in Quito. Or arrive in Quito a few days early and join us instead on a 4-day tour to Cloudforest Lodge in the Mashpi Reserve. The area is part of the Ecuadorian Choco rainforest, one of the world's greatest biodiversity hotspots. This optional extension is also available as a Post-Programme.

**DAY 2** Get a taste for Ecuador with a visit to a traditional market and a trip to Cotopaxi Volcano.

Today you'll visit Cotopaxi National Park, home to one of South America's most active volcanoes. But first, you'll stop at the photogenic Sangolquí open-air market, where you can browse colourful stalls with unique handicrafts, and sample different local specialities. Afterwards, we'll walk to Limpiopungo Lagoon, tucked in a high valley within the Cotopaxi National Park at 12,800 ft above sea level. Spot herds of llamas on the slopes and keep your eyes open for birds such as the Andean Gull, several species of hummingbird and – with luck – the majestic Andean Condor. You'll enjoy a tasty lunch prepared by some of the region's best chefs before returning to your hotel in the late afternoon.

**DAY 3** Fly away from the mainland to the Galápagos Islands and have your first wildlife encounter.

After breakfast, a short flight will take you to Baltra Island in the spectacular Galápagos archipelago. A transfer brings you straight to the port where your comfortable expedition ship MS Santa Cruz II awaits. In the afternoon we'll begin our exploration of the Galápagos Islands following the north shore of Santa Cruz towards the fascinating landscapes of Cerro Dragón - or Dragon Hill - where we'll land. The first part of the walk here passes by a brackish water lagoon that's frequented by shorebirds and American Flamingos. Further inland, the trail offers a beautiful view of the bay and the western islands of the archipelago, as well as a chance to get a first look at some land iguanas.

**DAY 4** Explore the coast by dinghy and set foot on the island of the marine iguanas.

You'll start your day at Punta Vicente Roca, on the north-western tip of Isabela Island. After breakfast, we'll explore the coast by dinghy, learning about the dramatic geology of the area from our naturalist guides. This site is a nesting place for several bird species, so look out for flightless cormorants, Galápagos penguins, and boobies. Weather permitting, you'll get to snorkel alongside the cliffs, where you might find green sea turtles, oceanic sun fish, and even fur seals. In the afternoon, we'll explore Fernandina, an island with a unique environment and a high density of marine iguanas. Scan the coast for sea lions, Sally lightfoot crabs, hawks and penguins.

**DAY 5** Meet the famous giant tortoises of Galápagos at the Charles Darwin Research Station.

Today, you'll explore Santa Cruz Island. In the morning, we'll disembark at Puerto Ayora to visit the Charles Darwin Research Station. The Station consists of a giant tortoise breeding centre and an impressive forest of prickly-pear cacti that's home to many land birds. It also serves as the headquarters for scientific



The Small Cruise Ship Collection

[www.small-cruise-ships.com](http://www.small-cruise-ships.com)

**01432 507 280** (within UK)

[info@small-cruise-ships.com](mailto:info@small-cruise-ships.com) | [small-cruise-ships.com](http://small-cruise-ships.com)





## The Small Cruise Ship Collection

[www.small-cruise-ships.com](http://www.small-cruise-ships.com)

[small-cruise-ships.com](http://small-cruise-ships.com)

[info@small-cruise-ships.com](mailto:info@small-cruise-ships.com)

investigation, conservation and the National Park administration. After the visit, we'll head up to the cooler highlands of Santa Cruz Island for lunch. You'll have several options to choose from in the afternoon, which you can decide on beforehand with your Expedition Leader. At the end of the afternoon's activities, you'll return to Puerto Ayora and re-join MS Santa Cruz II.

**DAY 6** Discover a bit of Galápagos history and look out for some underwater wildlife.

After breakfast, you'll enjoy a dinghy ride among the channels on Floreana's north shore, before taking in the incredible views of the island from Baroness Cove. Later on, we'll land at Post Office Bay to visit the historic barrel that has served as a post office in the archipelago for over two centuries. After lunch, you'll explore the underwater wonders around Champion Islet in a dinghy or aboard a glass-bottom boat. Here, you can snorkel in one of the best spots in the archipelago. From there, it's onwards to Cormorant Point, where we'll take a walk from an olivine-crystal beach to a brackish lagoon, where you can see American Flamingos, Pintail Ducks, and other birds.

**DAY 7** It's the end of the cruise and time to fly to Guayaquil on the mainland.

As your expedition cruise comes to a close, it's time to bid farewell to the amazing wildlife and scenery of one of the world's most incredible nature destinations. We'll also say farewell to our wonderful crew and Expedition Team as we disembark at Baltra Island. A transfer will take you to the airport, where your waiting flight will bring you to Guayaquil. Upon arrival in Guayaquil, a representative will assist with the international flight connection. Alternatively continue from Guayaquil to Quito to catch your international flight from there. Post-Programmes Explore more of Ecuador with one of our optional

Post-Programmes. Join us as we travel to Napo River, in the heart of the Ecuadorian Amazon. Fly to Coca and spend three nights in a lodge surrounded by the beautiful rainforest, and observe and learn about the flora and fauna on selected activities. Or travel from Quito to the Mashpi Reserve, a unique habitat and ecosystem. Enjoy a 3-night stay in luxurious Cloudforest Lodge and discover this breathtaking area (also available as a Pre-Programme). Both Post-Programmes include two nights in Quito.

**Please Note:**

Itineraries are subject to change.



The Small Cruise Ship Collection

[www.small-cruise-ships.com](http://www.small-cruise-ships.com)

**01432 507 280** (within UK)

[info@small-cruise-ships.com](mailto:info@small-cruise-ships.com) | [small-cruise-ships.com](http://small-cruise-ships.com)



The Small Cruise  
Ship Collection

[www.small-cruise-ships.com](http://www.small-cruise-ships.com)



[small-cruise-ships.com](http://small-cruise-ships.com)

[info@small-cruise-ships.com](mailto:info@small-cruise-ships.com)

## YOUR SHIP: SANTA CRUZ II

<b>YOUR SHIP:</b>	<b>Santa Cruz II</b>
<b>VESSEL TYPE:</b>	<b>Motor Yacht</b>
<b>LENGTH:</b>	<b>72m</b>
<b>PASSENGER CAPACITY:</b>	<b>90</b>
<b>BUILT/REFURBISHED:</b>	<b>2002 / 2015</b>

From top to bottom, the Santa Cruz II features ample, indulgent spaces. Modern, generous social areas laid out with choice contemporary materials feature prominently on four of its five decks. With an intelligent layout, including wide hallways and broad stairwells, guests will immediately know their way around. From dining areas indoors and out, the gymnasium and Jacuzzis to the elegant bar and lounge, not to forget the well-stocked library, the ship is designed to please with sophisticated simplicity. Luxury ratios of crew and guides to passengers guarantee quality individual attention. Facilities: · Bar-Lounge-Restaurant· Al fresco dining-BBQ· Gift shop· Gym· 24h Coffee Station (freecoffee, tea, and water)· Satellite telephone· WiFi hotspot (intermittent/low bandwidth)· PA system· Snorkelling equipment· Hair dryer· Ipad/MP3 docking station· Safe deposit box (in cabin)· Hot tub (2)· Reading room and naturalhistory library· Multiple purpose room· Air conditioned throughout· Wetsuit rental· Glass bottom boat· Kayaks Photo shows Santa Cruz which is used for 2015 Galapagos cruises - Santa Cruz II will be used for 2016.



The Small Cruise  
Ship Collection

[www.small-cruise-ships.com](http://www.small-cruise-ships.com)

**01432 507 280** (within UK)

[info@small-cruise-ships.com](mailto:info@small-cruise-ships.com) | [small-cruise-ships.com](http://small-cruise-ships.com)





The Small Cruise  
Ship Collection

[www.small-cruise-ships.com](http://www.small-cruise-ships.com)

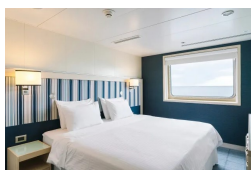
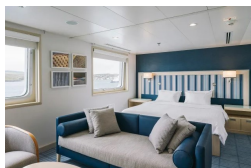


[small-cruise-ships.com](http://small-cruise-ships.com)

[info@small-cruise-ships.com](mailto:info@small-cruise-ships.com)

## INSIDE YOUR SHIP

Darwin Suite



Explorer cabin



The Small Cruise  
Ship Collection

[www.small-cruise-ships.com](http://www.small-cruise-ships.com)

**01432 507 280** (within UK)

[info@small-cruise-ships.com](mailto:info@small-cruise-ships.com) | [small-cruise-ships.com](http://small-cruise-ships.com)



# The Small Cruise Ship Collection

www.small-cruise-ships.com

small-cruise-ships.com

info@small-cruise-ships.com

## PRICING

### 22-Jul-2025 to 28-Jul-2025

Darwin Suite	£6758 GBP pp
Explorer cabin	£5041 GBP pp

### 05-Aug-2025 to 11-Aug-2025

Explorer cabin	£5041 GBP pp
Darwin Suite	£6758 GBP pp

### 19-Aug-2025 to 25-Aug-2025

Darwin Suite	£6758 GBP pp
Explorer cabin	£5041 GBP pp

### 02-Sep-2025 to 08-Sep-2025

Explorer cabin	£4949 GBP pp
Darwin Suite	£6623 GBP pp

### 16-Sep-2025 to 22-Sep-2025

Explorer cabin	£4949 GBP pp
Darwin Suite	£6623 GBP pp

### 30-Sep-2025 to 06-Oct-2025

Darwin Suite	£6623 GBP pp
Explorer cabin	£4949 GBP pp

### 14-Oct-2025 to 20-Oct-2025

Explorer cabin	£4949 GBP pp
Darwin Suite	£6623 GBP pp

### 28-Oct-2025 to 03-Nov-2025

Explorer cabin	£4949 GBP pp
Darwin Suite	£6623 GBP pp

### 11-Nov-2025 to 17-Nov-2025

Explorer cabin	£4949 GBP pp
Darwin Suite	£6623 GBP pp

### 25-Nov-2025 to 01-Dec-2025

Darwin Suite	£6623 GBP pp
Explorer cabin	£4949 GBP pp

### 09-Dec-2025 to 15-Dec-2025

Darwin Suite	£6623 GBP pp
Explorer cabin	£4949 GBP pp

### 23-Dec-2025 to 29-Dec-2025

Darwin Suite	£7251 GBP pp
Explorer cabin	£5384 GBP pp

### 06-Jan-2026 to 12-Jan-2026

Darwin Suite	£6623 GBP pp
Explorer cabin	£4949 GBP pp

### 20-Jan-2026 to 26-Jan-2026

Darwin Suite	£6623 GBP pp
Explorer cabin	£4949 GBP pp

### 03-Feb-2026 to 09-Feb-2026

Darwin Suite	£6623 GBP pp
Explorer cabin	£4949 GBP pp



The Small Cruise Ship Collection

www.small-cruise-ships.com

01432 507 280 (within UK)

info@small-cruise-ships.com | small-cruise-ships.com



## The Small Cruise Ship Collection

[www.small-cruise-ships.com](http://www.small-cruise-ships.com)



[small-cruise-ships.com](http://small-cruise-ships.com)

[info@small-cruise-ships.com](mailto:info@small-cruise-ships.com)

### 17-Feb-2026 to 23-Feb-2026

Darwin Suite	£6623 GBP pp
Explorer cabin	£4949 GBP pp

### 03-Mar-2026 to 09-Mar-2026

Explorer cabin	£4949 GBP pp
Darwin Suite	£6623 GBP pp

### 17-Mar-2026 to 23-Mar-2026

Darwin Suite	£6623 GBP pp
Explorer cabin	£4949 GBP pp



The Small Cruise Ship Collection

[www.small-cruise-ships.com](http://www.small-cruise-ships.com)

**01432 507 280** (within UK)

[info@small-cruise-ships.com](mailto:info@small-cruise-ships.com) | [small-cruise-ships.com](http://small-cruise-ships.com)





# The Small Cruise Ship Collection

[www.small-cruise-ships.com](http://www.small-cruise-ships.com)

[small-cruise-ships.com](http://small-cruise-ships.com)

[info@small-cruise-ships.com](mailto:info@small-cruise-ships.com)

## PRICING

### 31-Mar-2026 to 06-Apr-2026

Darwin Suite	£7755 GBP pp
Explorer cabin	£5835 GBP pp

### 14-Apr-2026 to 20-Apr-2026

Darwin Suite	£7755 GBP pp
Explorer cabin	£5835 GBP pp

### 28-Apr-2026 to 04-May-2026

Darwin Suite	£7755 GBP pp
Explorer cabin	£5835 GBP pp

### 12-May-2026 to 18-May-2026

Darwin Suite	£7755 GBP pp
Explorer cabin	£5835 GBP pp

### 26-May-2026 to 01-Jun-2026

Darwin Suite	£7755 GBP pp
Explorer cabin	£5835 GBP pp

### 09-Jun-2026 to 15-Jun-2026

Darwin Suite	£7755 GBP pp
Explorer cabin	£5835 GBP pp

### 23-Jun-2026 to 29-Jun-2026

Explorer cabin	£5835 GBP pp
Darwin Suite	£7755 GBP pp

### 07-Jul-2026 to 13-Jul-2026

Darwin Suite	£7755 GBP pp
Explorer cabin	£5835 GBP pp

### 21-Jul-2026 to 27-Jul-2026

Explorer cabin	£5835 GBP pp
Darwin Suite	£7755 GBP pp

### 04-Aug-2026 to 10-Aug-2026

Explorer cabin	£5835 GBP pp
Darwin Suite	£7755 GBP pp

### 18-Aug-2026 to 24-Aug-2026

Darwin Suite	£7755 GBP pp
Explorer cabin	£5835 GBP pp

### 01-Sep-2026 to 07-Sep-2026

Darwin Suite	£7755 GBP pp
Explorer cabin	£5835 GBP pp

### 15-Sep-2026 to 21-Sep-2026

Explorer cabin	£5835 GBP pp
Darwin Suite	£7755 GBP pp

### 29-Sep-2026 to 05-Oct-2026

Explorer cabin	£5835 GBP pp
Darwin Suite	£7755 GBP pp

### 13-Oct-2026 to 19-Oct-2026

Explorer cabin	£5835 GBP pp
Darwin Suite	£7755 GBP pp





## The Small Cruise Ship Collection

[www.small-cruise-ships.com](http://www.small-cruise-ships.com)



[small-cruise-ships.com](http://small-cruise-ships.com)

[info@small-cruise-ships.com](mailto:info@small-cruise-ships.com)

### 27-Oct-2026 to 02-Nov-2026

Explorer cabin	£5835 GBP pp
Darwin Suite	£7755 GBP pp

### 10-Nov-2026 to 16-Nov-2026

Explorer cabin	£5835 GBP pp
Darwin Suite	£7755 GBP pp

### 24-Nov-2026 to 30-Nov-2026

Explorer cabin	£5835 GBP pp
Darwin Suite	£7755 GBP pp



The Small Cruise Ship Collection

[www.small-cruise-ships.com](http://www.small-cruise-ships.com)

**01432 507 280** (within UK)

[info@small-cruise-ships.com](mailto:info@small-cruise-ships.com) | [small-cruise-ships.com](http://small-cruise-ships.com)



## The Small Cruise Ship Collection

[www.small-cruise-ships.com](http://www.small-cruise-ships.com)

[small-cruise-ships.com](http://small-cruise-ships.com)

[info@small-cruise-ships.com](mailto:info@small-cruise-ships.com)

## PRICING

### 08-Dec-2026 to 14-Dec-2026

Explorer cabin	£5835 GBP pp
----------------	--------------

Darwin Suite	£7755 GBP pp
--------------	--------------

### 22-Dec-2026 to 28-Dec-2026

Darwin Suite	£8429 GBP pp
--------------	--------------

Explorer cabin	£6305 GBP pp
----------------	--------------



The Small Cruise Ship Collection

[www.small-cruise-ships.com](http://www.small-cruise-ships.com)

**01432 507 280** (within UK)

[info@small-cruise-ships.com](mailto:info@small-cruise-ships.com) | [small-cruise-ships.com](http://small-cruise-ships.com)