



FALKLANDS, SOUTH GEORGIA & ANTARCTICA

The sub-Antarctic Falkland Islands/Malvinas and South Georgia are home to some of the most unique and abundant wildlife on earth. With beaches covered in fur seals, elephant seals, and hundreds of thousands of penguins, it's one of the most jaw-dropping nature scenes you will ever experience. We'll also explore the fascinating history of the area, dating back to the grandiose times of the 'Heroic Age of Antarctic Exploration' of the late 1800s and early 1900s.



ITINERARY

Day 1, Arrival

No need to stress about missed connections or flight delays as you arrive with plenty of time to unwind and enjoy all that the luxurious Arakur Resort & Spa has to offer, or head out and discover the southernmost city in the world, Ushuaia.

Day 2, Ushuaia



Day 6, Stanley, E Falkland/Malvinas

Explore the sights of Ushuaia such as the museums and Argentinean leather markets or relax in style and comfort at the hotel. Attend the optional evening briefing for the opportunity to ask questions and meet some of your fellow explorers.

Day 3, Embarkation

After a final morning exploring Ushuaia or unwinding at the resort, our mid-afternoon transfer will take you to the beautiful MS Seaventure. Our Expedition Team and ship staff will greet you on board, followed by a safety and orientation briefing and Captain's welcome dinner. You're on your way to Antarctica!

Day 4, Southern Ocean

As we sail south, important briefings on environmental regulations and expedition safety are held, and you won't want to miss our experts as they begin their informative and entertaining talks about the wildlife, history, and geology of the area.

Day 5, West Falklands/Malvinas

We'll be exploring some of the westernmost settled outposts in the Falklands/Malvinas, where you can take in the beautiful countryside and look for Black-Browed albatross or Rockhopper, King, and Magellanic penguin rookeries.

Stanley is a lively hub of activity nestled in a sheltered harbor. Head out on foot to explore the museum, shops and services centered on the port, or look for sea lions, dolphins, and bird life along the shores.

Day 7-8, Southern Ocean

Things really start to ramp up with plenty of wildlife identifying to do as we make our way east across the Antarctic Convergence and officially enter Antarctic waters. Shipboard presentations continue, featuring topics such as the captivating history and abundant wildlife of South Georgia.

Day 9-12, South Georgia

South Georgia is often referred to as the 'Serengeti of the Southern Ocean' and it's easy to see why as you take in tens of millions of breeding penguins, seals, and seabirds. Magnificent mountain scenery, glaciers galore, icebergs, a rich historical tapestry, and an incredible array of wildlife will astound you as we travel down South Georgia's leeward coast. We'll also visit historic Grytviken whaling station, featuring the tiny graveyard where the great Antarctic explorer Sir Ernest Shackleton is buried.

Day 13-14, Scotia Sea



Please Note:

Itineraries are subject to change.

Heading farther south, we'll continue our informative presentations and wildlife spotting as the icebergs become bigger and more plentiful.

Day 15-18, Antarctica

Here we'll explore any number of picturesque bays and famed harbors, maneuvering through majestic channels as we travel the wildlife-rich waters. There are great opportunities to stop at several active scientific bases and historic landing sites as we spot numerous species of penguins, seals, and whales along the rugged coastlines and in the sea.

Day 19-20, Drake Passage

Time to leave this magical place inspired, exhausted, and most likely changed forever. We make our way north, once again crossing the legendary Drake Passage. We'll have one last hurrah as we celebrate the conclusion of our expedition with a special slideshow and photography awards ceremony, then a final meal together.

Day 21, Ushuaia Disembarkation

With huge smiles on weary, content faces, and perhaps some new friends for life, we disembark in the morning, letting you catch a flight to Buenos Aires or stay in Ushuaia for more sights and adventure.

The Small Cruise Ship Collection

www.small-cruise-ships.com

small-cruise-ships.com

info@small-cruise-ships.com

YOUR SHIP: SEAVENTURE

YOUR SHIP:

Seaventure

VESSEL TYPE:

LENGTH:

PASSENGER CAPACITY:

BUILT/REFURBISHED:

A WORLD-CLASS SMALL SHIP EXPERIENCE Seaventure features a 1-A Super ice class rating -- the highest ice class awarded to passenger vessels. This means that we will be able to explore coves, bays, and channels that would previously have been forbidden to us. The ship also offers a host of new activities. There's a sauna, a fitness center, a custom-built citizen science lab, and heated saltwater pool. There is more storage space, which is important because it means we can carry more equipment, so that more of our guests can participate in activities like kayaking, snowshoeing, and camping. The common areas are larger and beautifully appointed, and the ship has two. Antarctica is a uniquely challenging environment, one that Seaventure is supremely prepared for. Its state-of-the-art stabilizing system provides safe, comfortable passage through even rough seas, and its ice rating is second-to-none in these waters. This means Seaventure can usher you into places (and amazing experiences) that regularly turn away lesser and larger ships. Seaventure features an outer viewing deck that circles the entire ship, and an outdoor dining area and heliport where we host events whenever weather permits. Indoors, our elegant dining areas and spacious

presentation room surround you with oversized windows, so you'll never have to miss a passing iceberg or an impromptu sighting of a Humpback or school of Orcas. Even our treadmills and ellipticals keep your eyes trained on the mesmerizing Antarctic landscape. Ship Facilities: Two Elevators serving all passenger decks Library with computers Fitness Center and Sauna Heated saltwater swimming pool Citizen Science Laboratory All Staterooms Feature: Exterior views Sitting area with chairs or sofa and table Complimentary Mini-Bar Flat Screen TV Telephone Safe to store your valuables Independent temperature controls Luxury toiletries



Hair dryer

The Small Cruise Ship Collection
www.small-cruise-ships.com

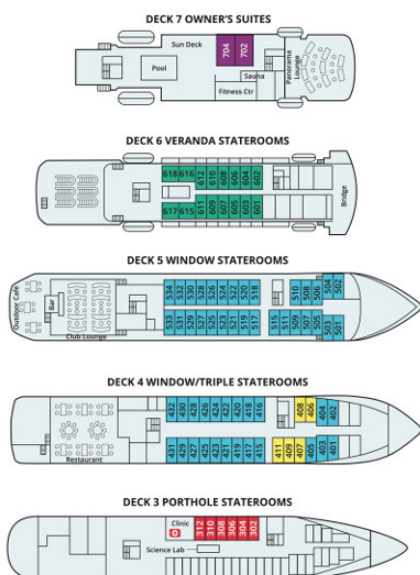
01432 507 280 (within UK)

info@small-cruise-ships.com | small-cruise-ships.com

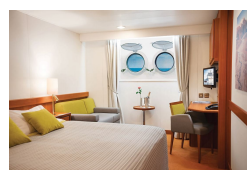
www.small-cruise-ships.com

info@small-cruise-ships.com

MS SEAVENTURE



Porthole Stateroom



Triple Stateroom

Veranda Stateroom





The Small Cruise Ship Collection

www.small-cruise-ships.com



small-cruise-ships.com

info@small-cruise-ships.com

PRICING

28-Dec-2025 to 16-Jan-2026

Veranda Stateroom	£26623 GBP pp
Owners Suite	£31943 GBP pp
Window Stateroom	£23150 GBP pp
Porthole Stateroom	£20671 GBP pp
Triple Stateroom	£17968 GBP pp

25-Feb-2026 to 16-Mar-2026

Owners Suite	£27778 GBP pp
Triple Stateroom	£15627 GBP pp
Veranda Stateroom	£23150 GBP pp
Porthole Stateroom	£17968 GBP pp
Window Stateroom	£20124 GBP pp

09-Jan-2027 to 28-Jan-2027

Porthole Stateroom	£20671 GBP pp
Triple Stateroom	£17968 GBP pp
Owners Suite	£32683 GBP pp
Veranda Stateroom	£26145 GBP pp
Window Stateroom	£23766 GBP pp



The Small Cruise Ship Collection

www.small-cruise-ships.com

01432 507 280 (within UK)

info@small-cruise-ships.com | small-cruise-ships.com