



The Small Cruise
Ship Collection

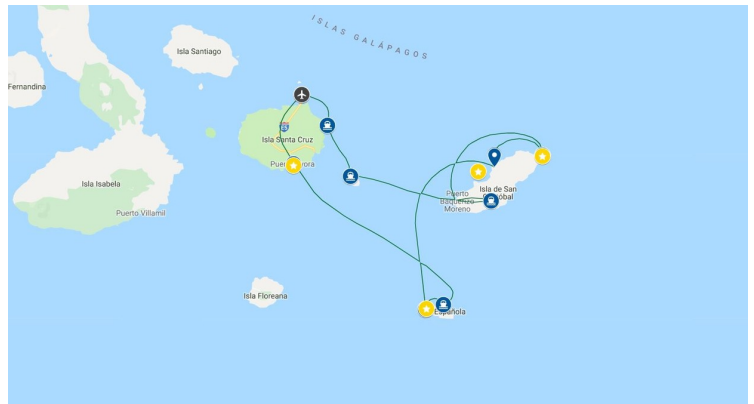
www.small-cruise-ships.com

small-cruise-ships.com

info@small-cruise-ships.com

EASTERN GALAPAGOS (LA PINTA)

We're delighted to have you on board for this journey of discovery to some of the most beautiful islands in the Galápagos. Our itinerary together begins on Baltra Island, a former military base during World War II, and now an Ecuadorian naval and air force station. Once all formalities are completed, we venture east along the volcanic shores of North Seymour and Santa Cruz Islands, until we reach the Plazas Islands. Our adventures start with a dry landing at a manmade jetty on South Plaza Island. During the next day, we will explore Santa Fe Island and San Cristóbal Island, home to the provincial capital of the Galápagos province. Then, we sail south to Española Island, with its remarkable visitor site (a favourite of many visitors): Punta Suárez. Here, we'll wander along the rugged coastline, home to hundreds of marine iguanas, sea lions, marine birds, and even albatross (during much of the year). In the afternoon, Gardner Bay provides a wonderful setting for a combination of beach-time, swimming, snorkelling or exploring aboard the glass-bottom boat. We end on Monday with a visit to the world-famous Charles Darwin Research Station on Santa Cruz Island, the most populous in the archipelago. Wherever we sail, whatever we do, the entire crew aboard La Pinta will do our utmost to ensure your Galápagos experience is truly deeply moving and memorable. Please Note: During Peak Season (Dec 21 - 29 & Dec 29 - Jan 04) a surcharge applies.



ITINERARY

Day 1 – BALTRA & SOUTH PLAZA ISLAND

Our adventure begins with a morning flight to Baltra Island and immediate transfer to the dock to board Yacht La Pinta. There's a welcome introductory briefing, boat drill, cabin assignment and then lunch. We weigh anchor and start sailing for our first afternoon outing. The turquoise waters of the channel here contrast brilliantly with the white sand and black lava of the shoreline, while a carpet of scarlet sesuvium succulents serves as groundcover for a grove of luminescent green prickly-pear cactus beyond, populated by yellow-grey land iguanas. Along the coastline one finds sea lion colonies, while sea birds play



The Small Cruise
Ship Collection

www.small-cruise-ships.com

01432 507 280 (within UK)

info@small-cruise-ships.com | small-cruise-ships.com



with the thermals that form along the cliffs of this small but spectacular island.

Day 2 - SANTA FE ISLAND & SAN CRISTOBAL ISLAND

We take the dinghy over to this idyllic sandy-white beach populated by colonies of sea lions. Galápagos hawks are often easily observed, perched atop salt bushes. The Santa Fe land iguana, unique to just this island, may be spotted during the walk. Following the walk, we can snorkel and swim along a natural wave barrier or ride the glass-bottom boat. After lunch, we disembark at Puerto Baquerizo Moreno, the island's capital, and drive 40 minutes to the island's southern shore. At Cerro Colorado, we visit the breeding centre for highly endangered giant tortoises in the midst of a fantastic deciduous forest, home to dozens of bird species, including the San Cristóbal mockingbird, and the San Cristóbal lava lizard, both island endemics.

Day 3 - SAN CRISTOBAL

We land at the eastern tip of San Cristóbal Island this morning. The trail that ascends from the beach provides spectacular views of the shoreline; we can observe frigates, plus a colony of bachelor sea lions. After the walk, if conditions are favourable, there is a chance to swim from the beach and snorkel. In the afternoon following lunch on board, a dinghy ride along the shores of tuff-stone layers takes us to Cerro Brujo's expansive, white coral beach, great for walking, with rewarding bird-watching featuring seabirds and shore birds. Also, look out for Galápagos sea lions. These are the same shores that Charles Darwin walked upon, back in September 1835.

Day 4 - ESPAÑOLA

Our morning outing at Punta Suárez provides an exciting walk on lava/boulder terrain to visit its unique sea bird colonies, including the waved albatrosses (April - January), boobies, swallow-tail gulls, and the famous "blowhole" lava formation. Also, look for red-green-black marine iguanas. Many regard this site as the best in the Galápagos. Back on board for lunch. In the afternoon, we set down at this beautiful, white coral beach for a short walk to observe the sea lions, mockingbirds, finches, or enjoy the beach. There is great snorkelling in this area, or else there's time to kayak or ride the glass-bottom boat.

Day 5 - SANTA CRUZ / BALTRA

Disembarking in the morning, we visit the Charles Darwin Research Station and the captive rearing programme for the giant tortoises. Here we witness the efforts and results of Galápagos fieldwork and study done in the name of science. We transfer via bus across Santa Cruz Island and a short ferry ride to Baltra. Our journey ends at Baltra Island, where we transfer to the airport to take the flight back to the mainland. Baltra's flat substrate (due to its uplifted origin) is the reason why the island was chosen back in the 1940s as the construction site for an airport.

Please Note:

Please remember that the exact route and programme may vary according to weather and ocean conditions and the wildlife we encounter. It's also subject to change without previous notice due mainly to readjustment of National Park policies and regulations.



The Small Cruise Ship Collection

www.small-cruise-ships.com



small-cruise-ships.com

info@small-cruise-ships.com

YOUR SHIP: LA PINTA

YOUR SHIP:	La Pinta
VESSEL TYPE:	Small Ship
LENGTH:	63 metres
PASSENGER CAPACITY:	48 (in 24 cabins)
BUILT/REFURBISHED:	1983 / refurbished 2007



After intense days of wildlife exploration, yacht La Pinta provides a haven of relaxation and tranquility with tastefully appointed accommodations and all the facilities for a stylish yet informal ambiance. A full week discovery trip to the Galapagos Islands aboard La Pinta allows encounters with unique fauna, like the famous giant Galapagos tortoises in the wild, land and marine iguanas, flamingos, penguins, blue-footed boobies and the famous Darwin's finches. La Pinta guests will cover all aspects of the Galapagos: discovery, adventure, environmental interpretation, aquatic activities, relaxation, superb service and great dining. Naturalist Guides enhance their interpretative skills with the use of state-of-the-art-expedition equipment. Our staff embraces a spirit of adventure, while at the same time ensures that you always travel in comfort and safety.



The Small Cruise Ship Collection

www.small-cruise-ships.com

01432 507 280 (within UK)

info@small-cruise-ships.com | small-cruise-ships.com



The Small Cruise Ship Collection

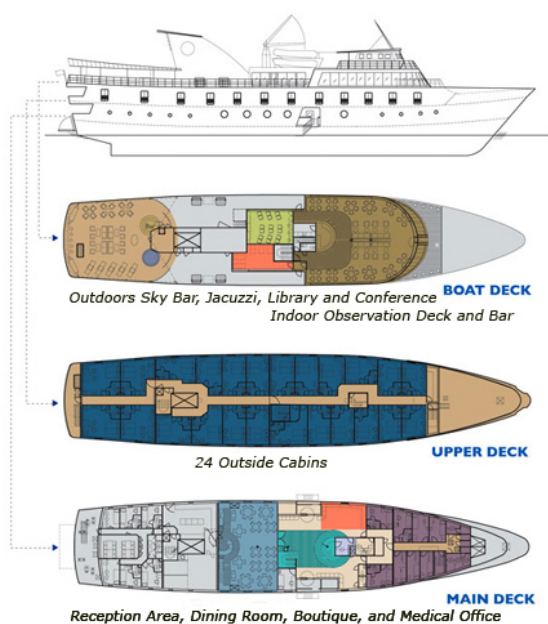
www.small-cruise-ships.com



small-cruise-ships.com

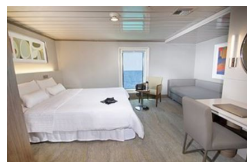
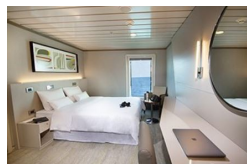
info@small-cruise-ships.com

INSIDE YOUR SHIP



Luxury Cabin/Captain Cabin

Luxury Plus Cabin/Admiral Cabin





The Small Cruise Ship Collection

www.small-cruise-ships.com

small-cruise-ships.com

info@small-cruise-ships.com

PRICING

02-May-2024 to 06-May-2024

Luxury Cabin/Captain Cabin	£4591 GBP pp
Luxury Plus Cabin/Admiral Cabin	£4591 GBP pp

06-May-2024 to 10-May-2024

Luxury Cabin/Captain Cabin	£4591 GBP pp
Luxury Plus Cabin/Admiral Cabin	£4591 GBP pp

16-May-2024 to 20-May-2024

Luxury Cabin/Captain Cabin	£4591 GBP pp
Luxury Plus Cabin/Admiral Cabin	£4591 GBP pp

20-May-2024 to 24-May-2024

Luxury Plus Cabin/Admiral Cabin	£4591 GBP pp
Luxury Cabin/Captain Cabin	£4591 GBP pp

30-May-2024 to 03-Jun-2024

Luxury Cabin/Captain Cabin	£4591 GBP pp
Luxury Plus Cabin/Admiral Cabin	£4591 GBP pp

03-Jun-2024 to 07-Jun-2024

Luxury Cabin/Captain Cabin	£4591 GBP pp
Luxury Plus Cabin/Admiral Cabin	£4591 GBP pp

13-Jun-2024 to 17-Jun-2024

Luxury Cabin/Captain Cabin	£4591 GBP pp
Luxury Plus Cabin/Admiral Cabin	£4591 GBP pp

17-Jun-2024 to 21-Jun-2024

Luxury Cabin/Captain Cabin	£4591 GBP pp
Luxury Plus Cabin/Admiral Cabin	£4591 GBP pp

27-Jun-2024 to 01-Jul-2024

Luxury Plus Cabin/Admiral Cabin	£4591 GBP pp
Luxury Cabin/Captain Cabin	£4591 GBP pp

01-Jul-2024 to 05-Jul-2024

Luxury Plus Cabin/Admiral Cabin	£4591 GBP pp
Luxury Cabin/Captain Cabin	£4591 GBP pp

11-Jul-2024 to 15-Jul-2024

Luxury Cabin/Captain Cabin	£4591 GBP pp
Luxury Plus Cabin/Admiral Cabin	£4591 GBP pp

15-Jul-2024 to 19-Jul-2024

Luxury Plus Cabin/Admiral Cabin	£4591 GBP pp
Luxury Cabin/Captain Cabin	£4591 GBP pp

25-Jul-2024 to 29-Jul-2024



The Small Cruise Ship Collection

www.small-cruise-ships.com



small-cruise-ships.com

info@small-cruise-ships.com

Luxury Cabin/Captain Cabin	£4591 GBP pp
----------------------------	--------------

Luxury Plus Cabin/Admiral Cabin	£4591 GBP pp
---------------------------------	--------------

29-Jul-2024 to 02-Aug-2024

Luxury Cabin/Captain Cabin	£4591 GBP pp
----------------------------	--------------

Luxury Plus Cabin/Admiral Cabin	£4591 GBP pp
---------------------------------	--------------

08-Aug-2024 to 12-Aug-2024

Luxury Plus Cabin/Admiral Cabin	£4591 GBP pp
---------------------------------	--------------

Luxury Cabin/Captain Cabin	£4591 GBP pp
----------------------------	--------------

12-Aug-2024 to 16-Aug-2024

Luxury Cabin/Captain Cabin	£4591 GBP pp
----------------------------	--------------

Luxury Plus Cabin/Admiral Cabin	£4591 GBP pp
---------------------------------	--------------

22-Aug-2024 to 26-Aug-2024

Luxury Cabin/Captain Cabin	£4591 GBP pp
----------------------------	--------------

Luxury Plus Cabin/Admiral Cabin	£4591 GBP pp
---------------------------------	--------------

26-Aug-2024 to 30-Aug-2024

Luxury Plus Cabin/Admiral Cabin	£4591 GBP pp
---------------------------------	--------------

Luxury Cabin/Captain Cabin	£4591 GBP pp
----------------------------	--------------



The Small Cruise Ship Collection

www.small-cruise-ships.com

01432 507 280 (within UK)

info@small-cruise-ships.com | small-cruise-ships.com



The Small Cruise Ship Collection

www.small-cruise-ships.com

small-cruise-ships.com

info@small-cruise-ships.com

PRICING

05-Sep-2024 to 09-Sep-2024

Luxury Plus Cabin/Admiral Cabin	£4591 GBP pp
Luxury Cabin/Captain Cabin	£4591 GBP pp

09-Sep-2024 to 13-Sep-2024

Luxury Cabin/Captain Cabin	£4591 GBP pp
Luxury Plus Cabin/Admiral Cabin	£4591 GBP pp

19-Sep-2024 to 23-Sep-2024

Luxury Cabin/Captain Cabin	£4591 GBP pp
Luxury Plus Cabin/Admiral Cabin	£4591 GBP pp

23-Sep-2024 to 27-Sep-2024

Luxury Cabin/Captain Cabin	£4591 GBP pp
Luxury Plus Cabin/Admiral Cabin	£4591 GBP pp

03-Oct-2024 to 07-Oct-2024

Luxury Plus Cabin/Admiral Cabin	£4591 GBP pp
Luxury Cabin/Captain Cabin	£4591 GBP pp

07-Oct-2024 to 11-Oct-2024

Luxury Cabin/Captain Cabin	£4591 GBP pp
Luxury Plus Cabin/Admiral Cabin	£4591 GBP pp

17-Oct-2024 to 21-Oct-2024

Luxury Plus Cabin/Admiral Cabin	£4591 GBP pp
Luxury Cabin/Captain Cabin	£4591 GBP pp

21-Oct-2024 to 25-Oct-2024

Luxury Plus Cabin/Admiral Cabin	£4591 GBP pp
Luxury Cabin/Captain Cabin	£4591 GBP pp

31-Oct-2024 to 04-Nov-2024

Luxury Cabin/Captain Cabin	£4591 GBP pp
Luxury Plus Cabin/Admiral Cabin	£4591 GBP pp

04-Nov-2024 to 08-Nov-2024

Luxury Plus Cabin/Admiral Cabin	£4591 GBP pp
Luxury Cabin/Captain Cabin	£4591 GBP pp

14-Nov-2024 to 18-Nov-2024

Luxury Cabin/Captain Cabin	£4591 GBP pp
Luxury Plus Cabin/Admiral Cabin	£4591 GBP pp

18-Nov-2024 to 22-Nov-2024

Luxury Plus Cabin/Admiral Cabin	£4591 GBP pp
Luxury Cabin/Captain Cabin	£4591 GBP pp

28-Nov-2024 to 02-Dec-2024



The Small Cruise Ship Collection

www.small-cruise-ships.com



small-cruise-ships.com

info@small-cruise-ships.com

Luxury Cabin/Captain Cabin	£4591 GBP pp
----------------------------	--------------

Luxury Plus Cabin/Admiral Cabin	£4591 GBP pp
---------------------------------	--------------

02-Dec-2024 to 06-Dec-2024

Luxury Plus Cabin/Admiral Cabin	£4591 GBP pp
---------------------------------	--------------

Luxury Cabin/Captain Cabin	£4591 GBP pp
----------------------------	--------------

12-Dec-2024 to 16-Dec-2024

Luxury Plus Cabin/Admiral Cabin	£4591 GBP pp
---------------------------------	--------------

Luxury Cabin/Captain Cabin	£4591 GBP pp
----------------------------	--------------

16-Dec-2024 to 20-Dec-2024

Luxury Plus Cabin/Admiral Cabin	£4591 GBP pp
---------------------------------	--------------

Luxury Cabin/Captain Cabin	£4591 GBP pp
----------------------------	--------------

26-Dec-2024 to 30-Dec-2024

Luxury Plus Cabin/Admiral Cabin	£4591 GBP pp
---------------------------------	--------------

Luxury Cabin/Captain Cabin	£4591 GBP pp
----------------------------	--------------

30-Dec-2024 to 03-Jan-2025

Luxury Plus Cabin/Admiral Cabin	£4591 GBP pp
---------------------------------	--------------

Luxury Cabin/Captain Cabin	£4591 GBP pp
----------------------------	--------------

Galapagos National Park
admission fee and transit Control
Card for Galapagos 120 USD pp

ADDITIONAL CHARGES:



The Small Cruise Ship Collection

www.small-cruise-ships.com

01432 507 280 (within UK)

info@small-cruise-ships.com | small-cruise-ships.com