

## The Small Cruise Ship Collection

www.small-cruise-ships.com

small-cruise-ships.com

info@small-cruise-ships.com

## CRUISING SOUTHERN SPAIN AND PORTUGAL – WITH SMITHSONIAN JOURNEYS

In alliance with Smithsonian Journeys. This cruise is part of a collection of PONANT voyages that are specially-tailored for English-speaking travelers who want to engage with the world. In addition to the usual elements of the PONANT experience, the listed price for these voyages includes transfers to and from the ship, talks and discussions aboard ship by world class experts, and a shore excursion or activity in each port of call that encourages guests to embrace the sights, sounds, tastes, and smells of the local environment and culture. Set sail aboard Le Dumont-d'Urville on an exceptional 8-day itinerary that will take you along the Portuguese and Spanish coasts, from Lisbon to Barcelona. Your voyage begins in Lisbon, Portugal's capital. Lisbon boasts two UNESCO World Heritage sites, the Jeronimos Monastery and the Belem Tower. Enjoy strolling through the streets of this city of seven hills, soaking up the local zest for life. You head first to the rich cultural landscape of Andalusia, where you will discover Cadiz, one of the country's oldest cities, and enchanting Malaga. These calls will allow for visits to the superb palace of the Alcazar in Seville and to the magnificent Alhambra of Granada, both UNESCO World Heritage Sites. Your ship will then sail to Palma de Mallorca in the Balearic Islands. Stop at the Gothic-style Bellver Castle, one of only a handful of circular castles in Europe, or board a vintage train through the orange and olive groves, almond and locust-bean trees, lush villages, and pine-covered mountains that create the island landscape. Your call in captivating Valencia offers the opportunity to view the city's architectural wonders, from the UNESCO World Heritage La Lonja de la Seda, a masterpiece of late Gothic architecture originally used for trading silk, to the

City of Arts and Sciences, a complex designed by native architect Santiago Calatrava. Your voyage will end in Barcelona, a city in perpetual movement, where you will fall under the spell of the famous architectural works of Antoni Gaudi, including the UNESCO World Heritage Basilica de la



Sagrada Familia.

### ITINERARY

Day 1 LISBON

Portugal's capital city located on the banks of the Tagus, only a few kilometres from the Atlantic coast, is a city of exceptionally

The Small Cruise Ship Collection  
www.small-cruise-ships.com

01432 507 280 (within UK)

info@small-cruise-ships.com | small-cruise-ships.com



## The Small Cruise Ship Collection

[www.small-cruise-ships.com](http://www.small-cruise-ships.com)

[small-cruise-ships.com](http://small-cruise-ships.com)

[info@small-cruise-ships.com](mailto:info@small-cruise-ships.com)

rich cultural diversity. At the mouth of the river harbour, impose two UNESCO World Heritage monuments, Jeronimos monastery and Belem tower. The Alfama hillside is also worth visiting: known for its fado bars and its Moorish streets, this district is the oldest one of the city and one of the most typical. Not far from there, Chiado's elegant streets are home to big fashion labels and are an invitation to a bit of luxury shopping.

### Day 2 AT SEA

During your day at sea, make the most of the many services and activities on board. Treat yourself to a moment of relaxation in the spa or stay in shape in the fitness centre. Depending on the season, let yourself be tempted by the swimming pool or a spot of sunbathing. This day without a port of call will also be an opportunity to enjoy the conferences or shows proposed on board, to do some shopping in the boutique or to meet the PONANT photographers in their dedicated space. As for lovers of the open sea, they will be able to visit the ship's upper deck to admire the spectacle of the waves and perhaps be lucky enough to observe marine species. A truly enchanted interlude, combining comfort, rest and entertainment.

### Day 3 CADIZ

Andalusia's Cadiz is located on the Costa de la Luz, in the south-west of Spain. From the beaches of Cortadura, to the flamenco bars of Santa Maria, through the colourful streets of la Viña, you will be amazed by this city, which is both steeped in history and extremely festive. In the medieval El Populo district, you will stroll along covered passages in the narrow gaps

between houses. You will also be able to mosey around the lush Mina square. The star of the show is the magnificent cathedral and its dome crowned with yellow porcelain, presiding above the Ocean.

### Day 4 MÁLAGA

A historical and festive town, Malaga is located in Andalusia, on the Costa del Sol. Between the marina and the beaches, the seaside promenade of La Farola offers an ideal setting for strolling and relaxing. Set slightly further back, the Malagueta bullring is one of the emblematic sites of the city. From the hill overlooking the old town, one can see Gibralfaro castle and the Alcazaba, two fortified ensembles rising out from the cypresses and maritime pines. To visit Pablo Picasso's birthplace, you will go first to the courtly plaza de la Merced. A few streets back from here, you can explore the museum dedicated to the artist, in the Buenavista palace.

### Day 5 AT SEA

During your day at sea, make the most of the many services and activities on board. Treat yourself to a moment of relaxation in the spa or stay in shape in the fitness centre. Depending on the season, let yourself be tempted by the swimming pool or a spot of sunbathing. This day without a port of call will also be an opportunity to enjoy the conferences or shows proposed on board, to do some shopping in the boutique or to meet the PONANT photographers in their dedicated space. As for lovers of the open sea, they will be able to visit the ship's upper deck to admire the spectacle of the waves and perhaps be lucky enough





## The Small Cruise Ship Collection

[www.small-cruise-ships.com](http://www.small-cruise-ships.com)

[small-cruise-ships.com](http://small-cruise-ships.com)

[info@small-cruise-ships.com](mailto:info@small-cruise-ships.com)

to observe marine species. A truly enchanted interlude, combining comfort, rest and entertainment.

### Day 6 PALMA DE MALLORCA, BALEARIC ISLANDS

Palma de Mallorca will reveal its many treasures: idyllic coves, majestic limestone cliffs that plunge into the clear sapphire- and turquoise-coloured waters of the Mediterranean, and vast plains planted with almond trees, olive trees and vineyards. When your ship calls at the capital of the Balearic Islands, take a walk to discover its emblematic monuments, such as its famous cathedral, and amble through its old streets. Here, like a painting, the island's historical heritage forms a backdrop to the lively and warm cosmopolitan atmosphere of the Mediterranean.

### Day 7 VALENCIA

Valencia - the city of Art and Sciences. Two hearts beat in this Spanish city: one is modern, avantgarde and almost futuristic; the other is more provincial, more traditional and nostalgic. Valencia has the temperament of a great Mediterranean city whose wide avenues form a border around the old town. The city has an abundance of architectural styles that coexist harmoniously, but above all it resolutely embraces the 21st Century with the futuristic structures of its Agora congress centre and City of Arts and Sciences, emerging from a crystal blue pool.

### Day 8 BARCELONA

Located on the seashore between the mountains of Montjuic and Tibidabo, Barcelona offers its many visitors a perfect blend of tradition and modernism. Truly an open-air museum, the "prodigious town" reveals an astonishing range of artistic treasures and museums, combining Roman ruins, medieval districts and a number of avant-garde elements from the 20th Century. Over the years, it has been marked by some of the greatest artists, such as Picasso, Miro or Gaudi, most of whose work has been listed as World Heritage Sites by UNESCO. Take the time to stroll along the Ramblas and enjoy the gentle, typically Mediterranean lifestyle of the capital of Catalonia.

**Please Note:**

Itineraries are subject to change.

The Small Cruise  
Ship Collection  
[www.small-cruise-ships.com](http://www.small-cruise-ships.com)

**01432 507 280** (within UK)

[info@small-cruise-ships.com](mailto:info@small-cruise-ships.com) | [small-cruise-ships.com](http://small-cruise-ships.com)



## The Small Cruise Ship Collection

[www.small-cruise-ships.com](http://www.small-cruise-ships.com)

[small-cruise-ships.com](http://small-cruise-ships.com)

[info@small-cruise-ships.com](mailto:info@small-cruise-ships.com)

## YOUR SHIP: LE DUMONT D'URVILLE

**YOUR SHIP:** Le Dumont d'Urville

**VESSEL TYPE:**

**LENGTH:**

**PASSENGER CAPACITY:**

**BUILT/REFURBISHED:**

Featuring innovative and environmentally-friendly equipment, elegantly designed staterooms, spacious suites with large windows, and lounge areas that open onto the outside, this new limited-capacity yacht boasting just 92 staterooms and suites will offer you a truly unique cruising experience. As the first ship in a new series that remains true to the Ponant spirit, Le Dumont d'Urville will embody the unique atmosphere that is the cruise line's hallmark: a subtle blend of refinement, intimacy and comfort. Aboard this ship that flies the French flag, you will experience the incomparable pleasure of an intimate cruise, with the possibility of exploring an ever-increasing range of destinations in an ethnic-chic ambiance with luxury service. Experience a luxurious setting where the accent is on authenticity and passion for travel. RESTAURANTS As it is an essential part of French culture, gastronomy will naturally have pride of place aboard this new ship. Through its two restaurants, Le Dumont d'Urville will invite you on a journey to elegance and epicureanism. In a relaxed atmosphere, a first dining area located on Deck 3 and able to seat 70 will serve grilled meats daily, along with a variety of salads and desserts. To the back of Deck 4, you will find a 260 m<sup>2</sup> panoramic restaurant which can

accommodate all of our passengers in a single sitting. Designed differently to that on our other ships, this dining area, which opens onto the outside, will have a buffet of salads, desserts and cheeses at your disposal. Our discreet and attentive crew will provide table service for hot meals. PUBLIC AREAS Like Le Boreal and its sisterships, Le Dumont d'Urville has many common areas that are designed and equipped to meet all of your needs while preserving the intimacy of each passenger. A 140 m<sup>2</sup> reception area includes: A reception/concierge desk, An excursions desk, The ship's administrative services, The sales office, manned by our Guest Relations Officer, Our 50 m<sup>2</sup> boutique which sells clothing, jewellery, beauty products, postcards and various accessories, Toilets accessible to passengers with reduced mobility. A new hydraulic platform with adjustable height provides: Easier boarding than on any other cruise ship, Easier Zodiac embarkation and disembarkation for expeditions, Easier access to the sea for swimming and practising various water sports such as kayaking or paddle-boarding. A pool deck offering: A pool with a panoramic view, equipped with a counter-current swimming system, A pleasant solarium, An outdoor bar and lounge with armchairs and sofas. A 200 m<sup>2</sup> main lounge which can accommodate all of our passengers to share convivial moments and to host activities organised during the day or evening. Lastly, a theatre that seats 188, equipped with: The latest sound and lighting technology, A LED wall as the stage backdrop, for the projection of high-resolution images and videos. Please click the following links to read more about Ponant and the other Ponant

The Small Cruise  
Ship Collection  
[www.small-cruise-ships.com](http://www.small-cruise-ships.com)

01432 507 280 (within UK)

[info@small-cruise-ships.com](mailto:info@small-cruise-ships.com) | [small-cruise-ships.com](http://small-cruise-ships.com)





cruise ships.

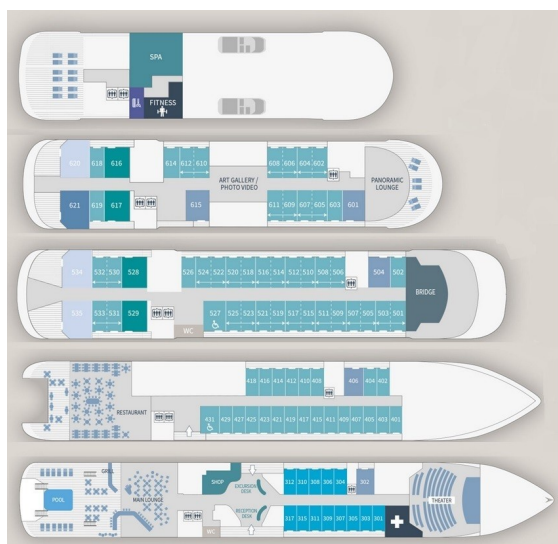
# The Small Cruise Ship Collection

www.small-cruise-ships.com

small-cruise-ships.com

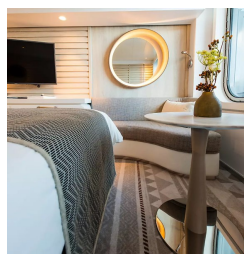
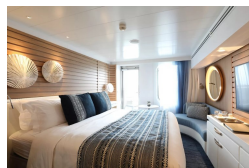
info@small-cruise-ships.com

## INSIDE YOUR SHIP

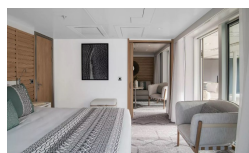
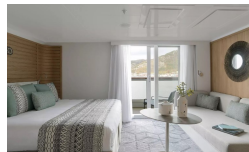


- Owner's Suite Deck 6
- Privilege Suites Deck 5-6
- Grand Deluxe Suites Deck 5-6
- Prestige Suites Deck 5-6
- Deluxe Suites Deck 5-6
- Prestige Cabins Deck 4-5-6
- Deluxe Cabins Deck 3

### Deluxe Stateroom



### Deluxe Suite



### Grand Deluxe Suite

### Owner's Suite

### Prestige Stateroom Deck 5

### Prestige Stateroom Deck 6

### Prestige Suite Deck 6

### Deluxe Stateroom

### Grand Deluxe Suite

### Owner's Suite

### Prestige Stateroom Deck 4

### Prestige Stateroom Deck 6

### Prestige Suite Deck 5

### Privilege Suite

The Small Cruise Ship Collection  
www.small-cruise-ships.com

01432 507 280 (within UK)

info@small-cruise-ships.com | small-cruise-ships.com





# The Small Cruise Ship Collection

[www.small-cruise-ships.com](http://www.small-cruise-ships.com)

[small-cruise-ships.com](http://small-cruise-ships.com)

[info@small-cruise-ships.com](mailto:info@small-cruise-ships.com)

## PRICING

### 30-Sep-2024 to 07-Oct-2024

Prestige Stateroom Deck 6	£4700 GBP pp
Prestige Suite Deck 5	£8420 GBP pp
Prestige Stateroom Deck 4	£4290 GBP pp
Prestige Stateroom Deck 5	£4470 GBP pp
Grand Deluxe Suite	£10110 GBP pp
Prestige Suite Deck 6	£8830 GBP pp
Deluxe Suite	£6350 GBP pp
Deluxe Stateroom	£3920 GBP pp
Owner's Suite	£13050 GBP pp
Privilege Suite	£9240 GBP pp

### 16-Sep-2025 to 23-Sep-2025

Privilege Suite	£16218 GBP pp
Grand Deluxe Suite	£17841 GBP pp
Owner's Suite	£18756 GBP pp
Prestige Stateroom Deck 6	£7685 GBP pp
Prestige Stateroom Deck 5	£7259 GBP pp
Prestige Stateroom Deck 4	£6910 GBP pp
Deluxe Stateroom	£6203 GBP pp
Prestige Suite Deck 5	£14674 GBP pp
Deluxe Suite	£10784 GBP pp
Prestige Suite Deck 6	£15444 GBP pp

### ADDITIONAL CHARGES:

Port Taxes & Fees 310 GBP pp