



## The Small Cruise Ship Collection

[www.small-cruise-ships.com](http://www.small-cruise-ships.com)

[small-cruise-ships.com](http://small-cruise-ships.com)

[info@small-cruise-ships.com](mailto:info@small-cruise-ships.com)

## COASTAL TREKS OF TASMANIA 2021 (CORAL DISCOVERER)

These hike themed expeditions combine an expedition voyage with hikes on some of Tasmania's best coastal tracks. Guests will enjoy a variety of shore excursions, and less strenuous walks will be available at each destination. The imposing cliffs, sandy beaches and sapphire waters of the rugged coast of Tasmania offer an experience of spectacular beauty. These special departures combine an expedition voyage with coastal treks on some of Tasmania's best walking tracks – a uniquely Australian back-to-nature experience. Guided by experienced bush-walkers, explore breathtaking coastal hikes along with insights into the region's unique eco-system. The ship's itinerary has been designed to seamlessly enable extensive shore excursions, however guests who wish to simply stay on-board during the day and enjoy the scenery are welcome to do so. After the day's exertions, retire to the Coral Discoverer's panoramic Explorer bar and recharge with a Tasmanian single malt or two. Surely there isn't a better way to explore Tasmania's coast! Some of the hikes we aim to do on these expeditions include Cape Haug (4hrs, Gr 3), Bishop & Clerk (7hrs Gr 4), Fluted Cape (2.5hrs Gr 4), Mt Beattie (3 hrs, Gr 2), and Wineglass Bay (1-2hrs, Gr 3). Learn more about each hike under the Itinerary section.



### ITINERARY

Please note:

The following itinerary is indicative and should be used as a guide as no two Tasmania expedition cruises with Coral Expeditions will be the same. Each expedition is crafted by our



## The Small Cruise Ship Collection

[www.small-cruise-ships.com](http://www.small-cruise-ships.com)

[small-cruise-ships.com](http://small-cruise-ships.com)

[info@small-cruise-ships.com](mailto:info@small-cruise-ships.com)

experienced Masters and Expedition Leaders, allowing us to quickly respond to favourable weather conditions to offer you the very best of Tasmania's flora, fauna and wild coastline.

### DAY 1: DEPART HOBART

Board your Coral Expeditions small ship at Hobart's Princes Wharf at 4:00pm where there is time to settle into your cabin before our 5:00pm departure. Take the time to become acquainted with all the facilities onboard before meeting your fellow travellers, the Captain and crew for the Captain's Welcome Drinks.

### MT BEATTIE, PORT DAVEY

Mt Beattie is an easy to moderate walk located close to magnificent Port Davey. The raw and remote beauty of this wilderness area is enhanced by the breathtaking views over Bathurst Channel and Bathurst Harbour. Walk Details: » 3 hours return » Grade 2/3 walk – some bush-walking experience recommended. Tracks may have short steep hill sections, a rough surface, and many steps. » Prepare with: A raincoat, woollen jumper or polar-fleece jacket, sturdy walking shoes or boots, and a sun hat.

### CAPE HAUY, THREE CAPES

Cape Hauy (part of the Three Capes Walk) is a medium difficulty walk through an extraordinary landscape. Experience views of Fortescue Bay from Mt Fortescue and the dolerite columns at the tip of Cape Hauy. Walk Details: » 4 hours return (4.4 km one way) » Grade 3 walk – some bush-walking experience recommended. Tracks may have short steep hill sections, a rough surface, and many steps. » Some hazardous cliffs and unprotected track edges – supervise children » Prepare with: A raincoat, woollen jumper or polar-fleece jacket, sturdy walking

shoes or boots, and a sun hat.

### FORTESCUE BAY TO WATERFALL BAY

The Fortescue Bay to Waterfall Bay trail is noted for providing an experience of some of the most magnificent coastline in Tasmania. The rainforest and blue gum stands and views of the Tasman Peninsula are nothing short of spectacular. At the end of this longer medium grade walk, the Coral Discoverer will be waiting to collect hikers. Walk Details » 7 hours return (16km one way) » Grade 3 walk – some bush-walking experience recommended. Tracks may have short steep hill sections, a rough surface, and many steps. » Some hazardous cliffs and unprotected track edges – supervise children » Prepare with: A raincoat, woollen jumper or polar-fleece jacket, sturdy walking shoes or boots, and a sun hat.

### FREYCINET NATIONAL PARK & WINEGLASS BAY

Wineglass Bay Tasmania with Coral Expeditions The spectacular peninsula of Freycinet is crafted from pink granite peaks – the Hazard mountains – surrounded by azure bays, and backed by dry eucalyptus forest. Enjoy a hike to the Wineglass Bay Lookout and later, join a beachcombers walk along Wineglass Bay, consistently voted one of the most breathtaking beaches in the world. Walk Details: » 1 – 1.5 hours return (3 km return) » Grade 3 walk – steep uphill climb one-way with rough bush steps. » Prepare with: water bottle, sturdy walking shoes or boots, and a sun hat.

### BISHOP AND CLERK

Bishop and Clerk is a challenging walk located in the Maria Island National Park. Pass through diverse landscapes of grasslands and forest, to emerge overlooking a dramatic and sweeping view of the Southern Ocean. Walk Details » 3.5 hours





## The Small Cruise Ship Collection

[www.small-cruise-ships.com](http://www.small-cruise-ships.com)

[small-cruise-ships.com](http://small-cruise-ships.com)

[info@small-cruise-ships.com](mailto:info@small-cruise-ships.com)

return (12 km return) » Grade 4 walk – bush-walking experience recommended. Tracks may be long, rough, and steep. Signage may be limited. » Supervise children, hazardous cliffs, unprotected track edges, rock screed scramble » Prepare with: A raincoat, woollen jumper or polar-fleece jacket, sturdy walking shoes or boots, and a sun hat. Other recommendations may include: Thermal pants, warm gloves, and woollen beanie.

### DAY 11: ARRIVE HOBART

Disembark in Hobart at 8:00am. A post-cruise transfer from the ship to Hobart city or airport is included. Note on fitness levels: this trip is suitable for passengers of all fitness levels, though reasonable mobility is required to enjoy all it has to offer. Our Xplorer tender vessels permit easy boarding without climbing any stairs. Hikes vary in intensity and wherever possible we split into groups to suit easy and moderate walkers. Guests are welcome to opt-out of any excursions and relax onboard. Summer temperatures and wind chill in Tasmania can be very cool so warm layered clothing is essential. As our Tasmanian cruises visit remote regions like Bathurst Harbour, this voyage is not suitable for passengers with serious medical conditions.

#### Note on fitness levels:

This trip involves moderate to challenging walks, therefore reasonable mobility is required to enjoy all it has to offer. Our Xplorer tender permits easy boarding without climbing any stairs. Hikes vary in intensity and where possible we split groups to suit easy and moderate walkers. Guests are welcome to opt out of any excursion and relax onboard – our top deck outdoor lounge is great on a sunny day. As the itinerary covers remote regions, it is not suitable for passengers with serious medical conditions.



## The Small Cruise Ship Collection

[www.small-cruise-ships.com](http://www.small-cruise-ships.com)

[small-cruise-ships.com](http://small-cruise-ships.com)

[info@small-cruise-ships.com](mailto:info@small-cruise-ships.com)

## YOUR SHIP: CORAL DISCOVERER

**YOUR SHIP:** Coral Discoverer

**VESSEL TYPE:**

**LENGTH:**

**PASSENGER CAPACITY:**

**BUILT/REFURBISHED:**

Yacht-like Coral Discoverer set a new benchmark standard of sophistication in expedition cruising when she was constructed by us in 2005. Coral Discoverer sailed on pioneering expeditions through Papua New Guinea, the islands of the South Pacific, Vanuatu, New Zealand, West Papua, and the Spice Islands. She led explorations into remote areas, focusing on destinations that were largely inaccessible to larger cruise ships. Coral Discoverer is exceptionally nimble and maneuverable, with a shallow draught to get up close to destinations, ocean views from all public spaces, an expansive open-air sun deck, all outside-facing staterooms, and state-of-the-art tools for exploration including the Xplorer, zodiacs, a glass-bottom boat, and kayaks. A full refurbishment in 2018 saw the addition of private balconies, the much-loved Xplorer sundeck bar, and all new furnishings throughout the ship. Comfortable, reliable, and intimately scaled, Coral Discoverer now conducts expeditions across Australia's coast - Tasmania, Cape York and Arnhem Land and the Kimberley. Australian flagged and staffed by an Australian and New Zealand crew, your experience aboard Coral Discoverer will be memorable. Onboard Accommodation Onboard accommodation comprises 36 spacious modern

staterooms. You can select from Bridge, Promenade or Main Deck staterooms offering a choice of twin through to junior king-size doubles. All staterooms have an ocean view, en-suite facilities, settee, large wardrobe, desk, luggage storage, individual air-conditioning control, and are serviced daily. Onboard Facilities What you would expect of a much larger cruise ship: Large sundeck Spa Pool Guest computer Comprehensive reference library Phone and fax facilities Lecture lounge with large plasma screen Limited laundry facilities Two fully stocked cocktail bars Boutique and dive shop Air-conditioned public areas Coral Discoverer is equipped with the latest technology active stabilizers and is fitted with state-of-the-art safety and navigational equipment and is the only Australian passenger ship registered with full SOLAS compliance allowing opportunities to explore a multitude of international voyages. Dining All meals during the cruise are included. Breakfast and lunch are served in the Dining Room located on the Main Deck and are buffet-style while dinner is table d'hote. Coffee and tea is available 24 hours. Standard hours are breakfast from 7:00-8:30am, lunch at 12:30pm and dinner at 7:30pm however meal times may vary according to the day's activities. Meal times will be advised in the onboard daily bulletins. Excursion Boats And Zodiacs The "Xplorer" is a specially designed aluminium excursion vessel used for the majority of our excursions. This vessel has high horsepower engines and will accommodate all passengers at one time. The "Xplorer" will be used for landings and for extensive exploration of rivers and tributaries. For your added convenience and comfort, the "Xplorer" is equipped with an awning and toilet. We

The Small Cruise Ship Collection  
[www.small-cruise-ships.com](http://www.small-cruise-ships.com)

**01432 507 280** (within UK)

[info@small-cruise-ships.com](mailto:info@small-cruise-ships.com) | [small-cruise-ships.com](http://small-cruise-ships.com)





The Small Cruise Ship Collection

[www.small-cruise-ships.com](http://www.small-cruise-ships.com)

[small-cruise-ships.com](http://small-cruise-ships.com) [info@small-cruise-ships.com](mailto:info@small-cruise-ships.com)

also carry two inflatable landing craft (Zodiacs). Designed for expedition work, these large and heavy-duty inflatables are extremely safe. Separate air compartments retain a large reserve of buoyancy even if the boats damaged. The flat bottom design permits these crafts to land directly onto the beaches. Expect nonetheless to wade through shallow water to reach the shore. See photo



below (right)

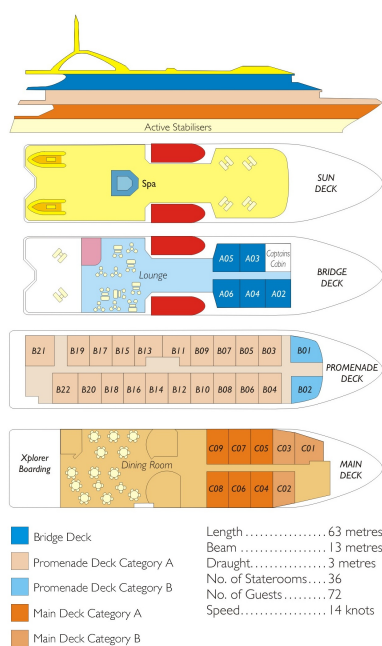
# The Small Cruise Ship Collection

www.small-cruise-ships.com

small-cruise-ships.com

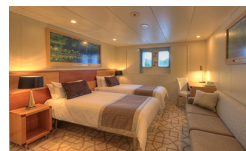
info@small-cruise-ships.com

## INSIDE YOUR SHIP



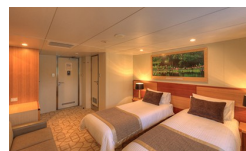
Bridge Deck Balcony

Main Deck A



Main Deck B

Promenade A



Promenade B





The Small Cruise  
Ship Collection

[www.small-cruise-ships.com](http://www.small-cruise-ships.com)

[small-cruise-ships.com](http://small-cruise-ships.com)

[info@small-cruise-ships.com](mailto:info@small-cruise-ships.com)

small-cruise-ships.com

info@small-cruise-ships.com

## PRICING

Bridge Deck Balcony	£5709 GBP pp
Main Deck A	£4534 GBP pp
Promenade A	£5366 GBP pp
Promenade B	£4950 GBP pp
Main Deck B	£4118 GBP pp

[www.small-cruise-ships.com](http://www.small-cruise-ships.com)

**01432 507 280** (within UK)

info@small-cruise-ships.com | **small-cruise-ships.com**