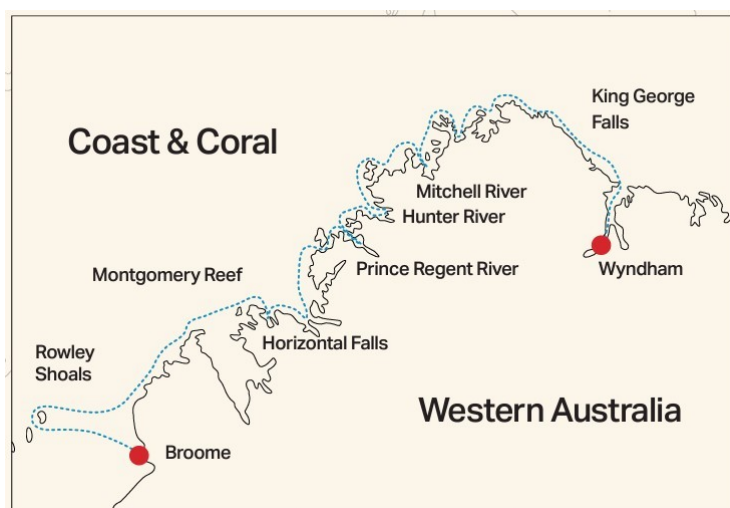




## COAST AND CORAL 10 DAY CRUISE

An adventure that combines the very best of two equally stunning destinations – the Kimberley coast and the Rowley Shoals! In the beginning your vista will be framed by layers of ancient geology and then your every moment will be awash in the vibrant colours of a coral wonderland. See all of the coastal icons and then immerse yourself in one of the world's most-rare habitats! This is a sample itinerary only. Prevailing conditions, local arrangements and indeed, what we discover on the day, may cause variation. Helicopter flights can be purchased additional to the indicated tariff as a package or individually.



### ITINERARY

#### Night 01 Welcome Aboard

Your “welcome aboard” the luxurious TRUE NORTH is in the frontier, pearling port of Broome. Embarkation is at 1700 – time for a cocktail with your fellow adventurers before departing at approximately 1800. Dinner is served shortly after leaving port and then it’s an overnight steam to the Rowley Shoals.

#### Day 01 Rowley Shoals

We arrive early at Clerke reef. Enjoy a sumptuous breakfast before exploring the atoll’s huge lagoon. You will marvel at crystal clear waters teeming with life – clouds of fish and corals of every imaginable colour and shape. There will be plenty of opportunity for beach combing on Bedwell Island, relaxed snorkelling in tropical waist deep water or perhaps some “catch and release” lagoon fishing using eco-friendly tackle. Our



## The Small Cruise Ship Collection

[www.small-cruise-ships.com](http://www.small-cruise-ships.com)

[small-cruise-ships.com](http://small-cruise-ships.com)

[info@small-cruise-ships.com](mailto:info@small-cruise-ships.com)

qualified and experienced crew will be on hand to personally introduce everyone to the delights of this pristine environment. When you're not on excursion, relax onboard TRUE NORTH and enjoy our renowned cuisine in air-conditioned comfort. The licensed open-air bar will definitely be the spot to witness your first spectacular 'Rowley's Sunset'.

### Day 02 Clerke Lagoon

Start the day with a visit to the Aquarium! Forget the Great Barrier Reef – this is world class snorkelling at its very best! Even if you've never put your head under water before – this is an absolute must. The water is only waist deep however the experience is literally "out of this world"! More brilliantly coloured corals, giant clams and more than 600 of the world's most beautiful fish species at your fingertips! Don't forget your underwater camera! In the afternoon we'll "crank up the action" with something very unique – high-speed snorkel drifts through the outer reef! Again our friendly crew members will be on hand to ensure that everyone gets to try this once-in-a-lifetime experience – as many times as you like! Our anchorage tonight is in the "swimming pool like" waters of Clerke Lagoon – 300 kilometres off the coast of Australia!

### Day 03 The Outer Reef

Another day in paradise and now it's time to experience the thrill of snorkelling on the outer reef! Outer reef snorkelling is a totally different experience – the sheer coral walls will take your breath away! Close encounters with humpback whales, manta rays and sailfish are also on the agenda. Finish the day with sunset drinks on the beach and one of our famous Island Parties!

### Day 04 The Horizontal Falls

Awake to the majestic Kimberley and savour an irresistible TRUE NORTH breakfast as we glide past Cockatoo and Koolan Islands – our attentive crew will be happy to introduce the colourful histories of both! Then it's time to 'personally' introduce you to the Kimberley icon – The Horizontal Falls. Experience the awesome power of the region's huge tidal range in an exhilarating tender ride and then climb aboard your air conditioned helicopter for a view of the falls that very few experience! Take a refreshing swim and a walk on the squeaky white sands of Silica Beach.

### Day 05 Montgomery Reef

It's time for some hot fishing action at Three Ways. Then join guest and crew alike for a moderate walk to Ruby Falls and be rewarded with a refreshing swim in the large natural rock pool. You will probably be enjoying lunch as we weigh anchor and set sail for Montgomery Reef! Montgomery is a unique eco-system that must be seen to be believed – and see it you will – as 140 square miles of coral reef rises out of the ocean right before your very eyes! Water cascades from the reef as the tide falls exposing a privileged glimpse of another world! Turtles, dugong, crocodiles and every imaginable sea creature abound, and the helicopter again puts all in perspective!

### Day 06 Prince Regent River

The scenery will astound and there are some not-to-be-missed fishing spots as the TRUE NORTH graces the majestic Prince Regent River. This morning's target species include delectable mangrove jack and fingermark bream. At King Cascade we will manoeuvre the TRUE NORTH right under the falls. Then it's time for more 'adventure in the tender' – a chance to stretch the laces on your hiking boots and an opportunity to swim in yet another picture perfect billabong, or perhaps you'd like to

The Small Cruise Ship Collection  
[www.small-cruise-ships.com](http://www.small-cruise-ships.com)

01432 507 280 (within UK)

[info@small-cruise-ships.com](mailto:info@small-cruise-ships.com) | [small-cruise-ships.com](http://small-cruise-ships.com)





## The Small Cruise Ship Collection

[www.small-cruise-ships.com](http://www.small-cruise-ships.com)

[small-cruise-ships.com](http://small-cruise-ships.com)

[info@small-cruise-ships.com](mailto:info@small-cruise-ships.com)

venture further upriver to visit the spectacular 'Amphitheatre' waterfall. The helicopter will be popular again when the first group of intrepid explorers returns from Jurassic Park!

### Day 07 Hunter River

Wake this morning in the magnificent Hunter River. The Hunter is about as far away as you can get in Australia - a stunning river system that is lined with dense mangrove forests and surrounded by rainforest encrusted mountains. And, the Hunter has it all - fishing, mud-crabbing, bird-watching and simply exploring "where few have been before!" Join one of our adventure boats for a closer look, enjoy a challenging hike to Jackson Falls and, there's even more splendour from the helicopter! In the afternoon we will sail into Price Frederick Harbour and enjoy sunset drinks on picturesque Crystals Beach. Enjoy some delicious hors d'oeuvres and watch the sun descend on another action packed day in the Kimberley.

### Day 08 Vansittart Bay

Today there will be an opportunity to see the "Bradshaws" - ancient rock art that pre-dates other examples of Aboriginal culture. In fact, they are possibly the oldest 'paintings' known to man. Vansittart Bay also has a reputation for producing monster mackerel! The heli-picnic at Eagle Falls is always a 'big hit' - enjoy a sumptuous picnic lunch amidst breathtaking scenery. The adventure boats will also be busy exploring the local beaches and creeks.

### Day 09 The King George

Yet another mighty Kimberley river - The King George! As soon as the tide is high enough, we'll cross the sand bars at the mouth to reveal even more breathtaking river vista. Then our journey upstream will take us to the very 'jewel in the crown' -

The King George Falls. Take the helicopter to view the top of the falls for another highlight. Just the thought of leaving this magnificence will inspire mutiny! Learn about the bombing of a state-ship during WWII, then take a stroll at Tranquil Bay before we continue onto the frontier Port of Wyndham.

### Day 10 Transfer to Kununurra

Your courtesy coach will arrive at approximately 0800 hours for transfer to Kununurra and your crew will already be looking forward to the next opportunity to welcome you aboard the mighty TRUE NORTH!

### Please Note:

Itineraries are subject to change.

# The Small Cruise Ship Collection

[www.small-cruise-ships.com](http://www.small-cruise-ships.com)

[small-cruise-ships.com](http://small-cruise-ships.com)

[info@small-cruise-ships.com](mailto:info@small-cruise-ships.com)

## YOUR SHIP: TRUE NORTH

**YOUR SHIP:**

**True North**

**VESSEL TYPE:**

**LENGTH:**

**PASSENGER CAPACITY:**

**BUILT/REFURBISHED:**

The TRUE NORTH allows discerning adventurers to experience wilderness in surroundings more akin to one of the world's most exclusive hotels. Guests are able to take advantage of a number of lavish vantage points including a sundeck, a forward observation lounge, a ship's lounge and an alfresco bar. The ship's naturalist presents interpretative information on plasma screens and, an internet cafe enables convenient communication with the outside world. A popular venue on any North Star cruise, the lower deck dining room offers the ultimate in comfort and uninterrupted vista - large panoramic windows ensure that guests never miss any of the action, even when they are enjoying the 'finest in fine dining'. All cabins feature stylish decor, en-suite facilities, in-house entertainment and satellite telephones. The Explorer Class staterooms and the River Class cabins offer king size beds that can be converted to singles and the Ocean Class twins feature roomy single beds. Multiple expedition boats provide guests with greater opportunity to do "what they want, when they want" and, to add yet another dimension to adventure, most cruise options feature an onboard helicopter! The purpose built TRUE NORTH is able to explore the upper reaches of shallow river systems - guests need only step

out of their cabins to experience wilderness and, the latest in computer controlled motion stabilizers ensures a



comfortable ride.



# The Small Cruise Ship Collection

www.small-cruise-ships.com

small-cruise-ships.com

info@small-cruise-ships.com

## INSIDE YOUR SHIP

### Upper Deck

#### Explorer Class

1. Bradshaw
2. Dampier
3. Durack
4. Parker King



### Explorer Class - Stateroom

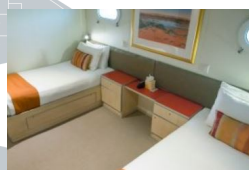
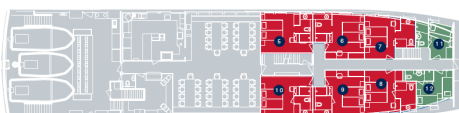


### Ocean Class - Twin

### Main Deck

#### River Class & Ocean Class

5. Prince Regent River
6. Mitchell River
7. Berkeley River
8. Drysdale River
9. Hunter River
10. King George River
11. Camden Harbour
12. Lacepede Islands



### Lower Deck

#### Ocean Class

13. Koolama Bay
14. Montgomery Reef
15. Jackson Falls
16. Kings Cascade
17. Imperieuse Reef
18. Atlantis Bay



### Ocean Premium Cabin



### River Class - Double



### True North II - Explorer Class - Stateroom

### True North II - Ocean Class - Twin

# The Small Cruise Ship Collection

www.small-cruise-ships.com

small-cruise-ships.com

info@small-cruise-ships.com

## PRICING

### 24-Aug-2024 to 03-Sep-2024

True North II - Ocean Class - Twin	£9357 GBP pp
True North II - Explorer Class - Stateroom	£11957 GBP pp
True North II - River Class - Double	£10917 GBP pp

### 25-Sep-2024 to 05-Oct-2024

True North II - River Class - Double	£10917 GBP pp
True North II - Ocean Class - Twin	£9357 GBP pp
True North II - Explorer Class - Stateroom	£11957 GBP pp

### 05-Oct-2024 to 15-Oct-2024

True North II - River Class - Double	£10917 GBP pp
True North II - Ocean Class - Twin	£9357 GBP pp
True North II - Explorer Class - Stateroom	£11957 GBP pp

### 16-Oct-2024 to 26-Oct-2024

True North II - Ocean Class - Twin	£9357 GBP pp
True North II - River Class - Double	£10917 GBP pp
True North II - Explorer Class - Stateroom	£11957 GBP pp

### 26-Oct-2024 to 05-Nov-2024

True North II - Explorer Class - Stateroom	£11957 GBP pp
True North II - Ocean Class - Twin	£9357 GBP pp
True North II - River Class - Double	£10917 GBP pp

### 23-Aug-2025 to 02-Sep-2025

Ocean Premium Cabin	£16949 GBP pp
River Class - Double	£19029 GBP pp
Explorer Class - Stateroom	£20797 GBP pp
Ocean Class - Twin	£14869 GBP pp

### 02-Sep-2025 to 12-Sep-2025

River Class - Double	£10917 GBP pp
Explorer Class - Stateroom	£12477 GBP pp
Ocean Premium Cabin	£11437 GBP pp
Ocean Class - Twin	£9357 GBP pp

### 23-Sep-2025 to 03-Oct-2025

Ocean Premium Cabin	£11437 GBP pp
Ocean Class - Twin	£9357 GBP pp
Explorer Class - Stateroom	£12477 GBP pp
River Class - Double	£10917 GBP pp

### 04-Oct-2025 to 14-Oct-2025



River Class - Double	£10917 GBP pp
Explorer Class - Stateroom	£12477 GBP pp
Ocean Class - Twin	£9357 GBP pp
Ocean Premium Cabin	£11437 GBP pp

**25-Oct-2025 to 04-Nov-2025**

Explorer Class - Stateroom	£12477 GBP pp
Ocean Premium Cabin	£11437 GBP pp
River Class - Double	£10917 GBP pp
Ocean Class - Twin	£9357 GBP pp