



The Small Cruise
Ship Collection

www.small-cruise-ships.com

small-cruise-ships.com

info@small-cruise-ships.com

CHRISTMAS - CARIBBEAN STYLE SAILING CRUISE

Embark on an extraordinary 15 day Caribbean journey, where new holiday traditions await you. Celebrate Christmas and New Year's Eve surrounded by palm trees, reggae rhythms, and the vibrant energy of Cuban music. Indulge in me-time under the billowing white sails, allowing the trade winds to whisk you away to a state of pure relaxation. Immerse yourself in the laid-back island lifestyle, enjoying casual beach barbecues and zodiac jaunts to picturesque shores. Experience the breathtaking beauty of St Lucia and Grenada, with their lush green volcanoes and vibrant national parks. Unwind in the luxury of St Barths, a vacation retreat frequented by Hollywood stars, boasting chic marinas, designer stores, and pristine sandy beaches. End each day with a spectacular sundowner, admiring the stunning views of palm trees, volcanoes, and the serene Caribbean Sea, as the most beautiful sunsets paint the sky in a kaleidoscope of colors.



ITINERARY

DAY 1, Pointe-à-Pitre/Guadeloupe

Departure 10.00 pm

DAY 2, Day beneath full sails

Climbing the rigging, untying ropes, setting sails - today is all



The Small Cruise
Ship Collection

www.small-cruise-ships.com

01432 507 280 (within UK)

info@small-cruise-ships.com | small-cruise-ships.com



about sailing. Time to lean back and relax in the deck chair and watch the passionate crew hoisting the sails by hand.

DAY 3, North Sound/Virgin Gorda

Arrival 01.00 pm, Departure 11.00 pm Explorers and privateers once used to cross swords in the Sir Francis Drake Channel. Nowadays the sea around the British Virgin Islands is one of the world's best sailing areas. Heavenly bays, gorgeous beaches, idyllic anchoring spots, smart yacht clubs and charming little beach bars make the island a popular haunt for sailors. On Virgin Gorda, once called "The Fat Virgin" by Columbus due to its shape, you can find "The Baths", one of nature's most beautiful oddities, in the National Park. Ground to a sphere and polished to a shine, the huge granite formations on the beach and in the water create a multi-branched labyrinth of giant boulders.

DAY 4, Sail through the Sir Francis Drake Channel White Bay/Jost van Dyke

Arrival 13.30 Uhr, Departure 19.00 Uhr The Sir Francis Drake Channel, where swords were once crossed, is now one of the most beautiful sailing spots. Jost van Dyke, the smallest of the main islands in the British Virgin Islands, is a mountainous volcanic object of beauty with fewer than 300 inhabitants. One of them, Foxy, has been mixing his cocktails since 1968 and the bar of the same name enjoys a legendary reputation as perhaps the most famous beach bar in the Lesser Antilles. The island's past is less reputable - it was named by a Dutch pirate. The island gives its most beautiful treasures to all who visit - fine sand, green palm trees, colorful beach bars and the luminous

blue of the sea.

DAY 5, Gustavia/St Barthélemy

Arrival 01.30 pm St Barthelemy, affectionately known as St Barths by most, had already had many "owners" before the Lesser Antilles were acquired by France in 1877. When the first estate was acquired by the banker David Rockefeller in 1957, the island's future was finally sealed. It became a refuge for the international jet set and an elegant holiday paradise for many Hollywood stars. For over 40 years, St Barths has cultivated a luxurious lifestyle with a Caribbean laissez-faire approach. You can stroll through the charming main town of Gustavia, whose beautifully restored houses and colonial facades look out over the sea with its elegant superyachts, browse in the shops for precious items, or enjoy a sundowner in the picturesque harbor surrounded by clusters of high class bars and restaurants.

DAY 6, Gustavia/St Barthélemy

Departure 01.30 pm St Barthelemy, affectionately known as St Barths by most, had already had many "owners" before the Lesser Antilles were acquired by France in 1877. When the first estate was acquired by the banker David Rockefeller in 1957, the island's future was finally sealed. It became a refuge for the international jet set and an elegant holiday paradise for many Hollywood stars. For over 40 years, St Barths has cultivated a luxurious lifestyle with a Caribbean laissez-faire approach. You can stroll through the charming main town of Gustavia, whose beautifully restored houses and colonial facades look out over the sea with its elegant superyachts, browse in the shops for



precious items, or enjoy a sundowner in the picturesque harbor surrounded by clusters of high class bars and restaurants.

DAY 7, Day beneath full sails

Today is all about sailing. Time to lean back and relax in the deck chair and watch the passionate crew hoisting the sails by hand.

DAY 8, Terre-de-Haut/Îles des Saintes

Arrival 08.00 am, Departure 01.30 pm Îles des Saintes is a small archipelago which was disputed for a long time until it finally became French in 1816. In the charming main town of Terre-de-Haut, you can take a delightful stroll along the waterside promenade. Boutiques, cafes, bars and restaurants invite you to browse and spend some time here. The 'savoir vivre' takes place against a backdrop lit up in all the pastel shades of the Caribbean. Fort Napoleon is set high above the bay and your climb up to it is rewarded by a spectacular panoramic view. On the other side of the island, the Plage de Pompierre invites you to enjoy a dip in the sea and sunbathe on the beach.

DAY 9, Soufrière/St Lucia

Arrival 08.00 am, Departure 05.00 pm Two famous volcanic cones are indisputably the emblem of St Lucia and have been designated as UNESCO World Heritage Sites. Gros and Petit Piton tower over the southern, windward side of the island and,

in Soufrière, seem close enough to touch. The volcanoes have in fact long been extinct, but the sulphur springs demonstrate the power of the earth's core and still bubble up. In the Botanical Gardens, natural abundance is combined with artistic arrangements to create a colorful tropical paradise. Some people claim that Josephine, who later became Napoleon's wife, used to bathe in the little pool in the garden.s

DAY 10, Port Elizabeth/Bequia

Arrival 02.00 pm, Departure 11.00 pm Bequia is actually the largest island in the Grenadines, but still small and tranquil at just 18 square kilometers (87 square miles) in size. Elegant sailing yachts sway in the natural shelter of Admiralty Bay, while in lovely Port Elizabeth, with its attractive beach bars, you are right in the heart of a lifestyle that likes to take things easy. You can find Princess Margaret Beach just nearby, named because it was once visited by the British royal. On the eastern coast you can find the Old Hegg Turtle Sanctuary which focuses on rearing and caring for endangered turtles.

DAY 11, Chatham Bay/Union Island

Arrival 08.00 am, Departure 06.00 pm Right in the south of the Grenadines are Union Island and the Tobago Cays. Union Island was given the evocative name "the Tahiti of the West Indies" thanks to its volcanic silhouette. Four small uninhabited islands, surrounded by a protective horseshoe-shaped coral reef, form the Tobago Cays. The Horseshoe Reef holds the Atlantic swell at bay and its unique animal and plant life make it an ideal place for snorkelling. The lagoon between the islets shimmers in all



The Small Cruise Ship Collection

www.small-cruise-ships.com



small-cruise-ships.com

info@small-cruise-ships.com

shades from turquoise through to emerald green and invites you to take a dip at the fantastic beaches.

DAY 12, St George's/Grenada

Arrival 08.00 am Beautiful beaches, aromatic spice plantations, dense rainforests, waterfalls and a volcano that has long been extinct, picturesquely towering over this stunningly beautiful island. For many people, Grenada is the incarnation of a tropical paradise and St George's the most beautiful little port in the Grenadines. All around the horseshoe-shaped bay there are numerous houses that remind you of colonial times. There is good reason why nutmeg is immortalised on the national flag. Alongside cloves, cinnamon and ginger, it is one of the island's biggest exports.

DAY 13, St George's/Grenada

Departure 08.00 am Beautiful beaches, aromatic spice plantations, dense rainforests, waterfalls and a volcano that has long been extinct, picturesquely towering over this stunningly beautiful island. For many people, Grenada is the incarnation of a tropical paradise and St George's the most beautiful little port in the Grenadines. All around the horseshoe-shaped bay there are numerous houses that remind you of colonial times. There is good reason why nutmeg is immortalised on the national flag. Alongside cloves, cinnamon and ginger, it is one of the island's biggest exports.

DAY 14, Day beneath full sails

Fitness, cosmetics, massage or relax with a good book in the deck chair and enjoy the sun and the sea. The last sailing day on board invites you once again to your personal pampering program.

DAY 15, Pointe-à-Pitre/Guadeloupe

Arrival 08.00 am

Please Note:

Itineraries are subject to change.



The Small Cruise Ship Collection

www.small-cruise-ships.com

01432 507 280 (within UK)

info@small-cruise-ships.com | small-cruise-ships.com



The Small Cruise
Ship Collection

www.small-cruise-ships.com



small-cruise-ships.com

info@small-cruise-ships.com

YOUR SHIP: SEA CLOUD II

YOUR SHIP:	Sea Cloud II
VESSEL TYPE:	Tall Ship (Sailing)
LENGTH:	105 metres
PASSENGER CAPACITY:	96
BUILT/REFURBISHED:	2001

grandeur of travelling under sail, rekindling memories of a



bygone age.

Launched in 2001, Sea Cloud II is a stunning vessel, built along traditional lines, but offering deluxe accommodation. She combines timeless elegance of sailing ships of the past with the highest safety standards and the luxurious comfort of modern cruise ships. Just like her legendary sister ship Sea Cloud, the 29,600 square feet of sails is set by hand which is a truly magical sight. Built to accommodate 96 passengers in five star luxury, she offers a range of beautifully appointed suites and cabins which are furnished with great style. All accommodations have outside views and the bathrooms, in light marble, are unusually spacious and extremely comfortable. The finest, carefully chosen fabrics, combined with leather, rattan and other materials, brass and gold, precious woods and marble together create an impressive ensemble. No expense has been spared to create a sympathetic ambience in both the accommodations and public areas and this is reflected throughout the vessel. Public areas include an elegant lounge, library, fitness centre, boutique, lido bar and hospital. The single sitting dining room is airy and modern and the quality of the cuisine and service will be to the highest of standards, as one would expect on a Sea Cloud cruise. Relax on the Lido deck and experience the natural



The Small Cruise
Ship Collection

www.small-cruise-ships.com

01432 507 280 (within UK)

info@small-cruise-ships.com | small-cruise-ships.com



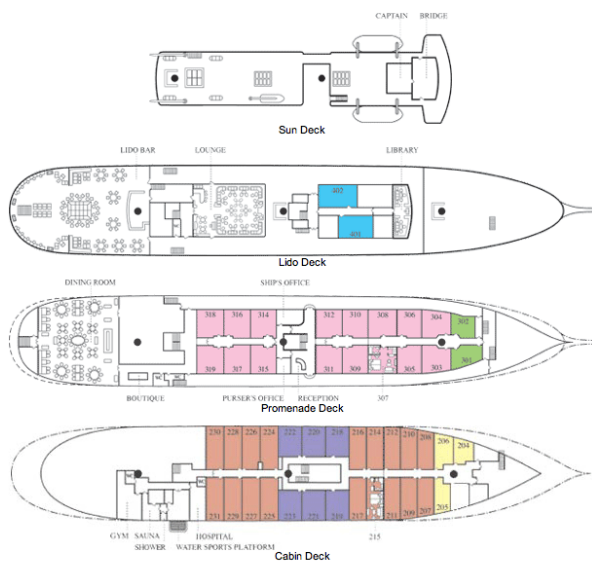
The Small Cruise Ship Collection

www.small-cruise-ships.com

small-cruise-ships.com

info@small-cruise-ships.com

INSIDE YOUR SHIP



Please note that category F cabins have one lower and one upper berth bed

Key
Cat A Cat B Cat C
Cat D Cat E Cat F

Category A. From



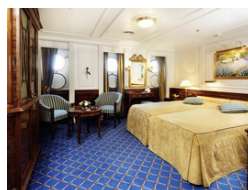
Category B. From



Category C. From



Category D. From



Category E. From

Category F Upper/Lower Beds. From



The Small Cruise Ship Collection

www.small-cruise-ships.com

01432 507 280 (within UK)

info@small-cruise-ships.com | small-cruise-ships.com



The Small Cruise
Ship Collection

www.small-cruise-ships.com

small-cruise-ships.com

info@small-cruise-ships.com

PRICING

20-Dec-2024 to 03-Jan-2025

GTY Double Cabin. From	£5863 GBP pp
Category F Upper/Lower Beds. From	£6343 GBP pp
Category E. From	£7426 GBP pp
Category D. From	£8262 GBP pp
Category C. From	£8765 GBP pp
Category B. From	£10414 GBP pp
Category A. From	£11529 GBP pp



The Small Cruise
Ship Collection

www.small-cruise-ships.com

01432 507 280 (within UK)

info@small-cruise-ships.com | small-cruise-ships.com