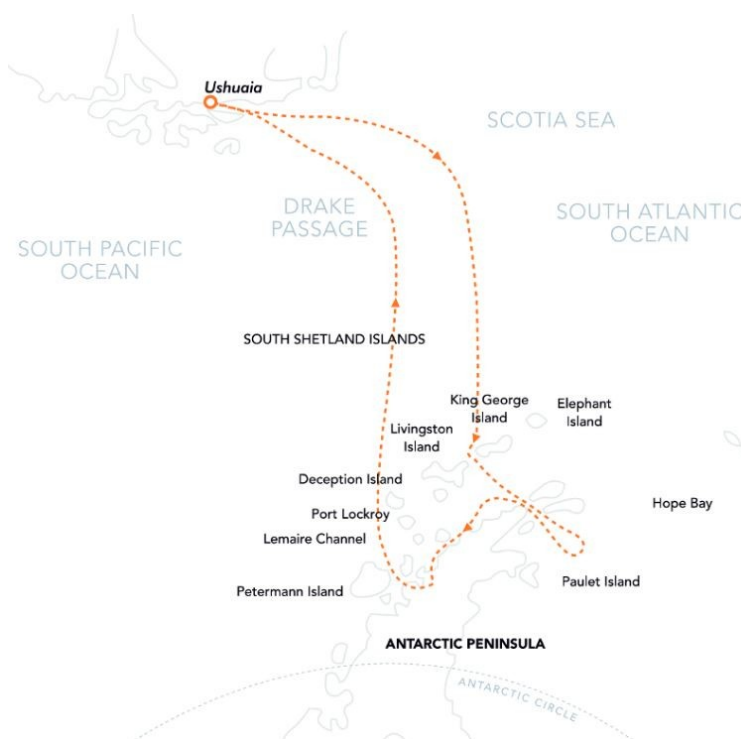




## CHRISTMAS IN ANTARCTICA ABOARD SEAVENTURE

Celebrate with us and explore the majestic white continent, enjoying abundant wildlife encounters and the striking panoramic landscape of the Antarctic Sound, Weddell Sea and Antarctic Peninsula. Our team ensures that the spirit onboard the ship is festive and fun, delivering an unforgettable experience for your holiday season.



### ITINERARY

#### Day 1, Arrival in to Ushuaia

No need to stress about missed connections or flight delays as you arrive with plenty of time to unwind and enjoy the beautiful Arakur Resort & Spa or spend time discovering the southernmost city in the world, Ushuaia.

#### Day 2, Ushuaia

Explore the sights of Ushuaia such as the museums and Argentinean leather markets or continue relaxing at the hotel.



Attend the optional evening briefing for the opportunity to ask questions and meet some of your fellow travelers.

#### Day 3, Embarkation

Spend your morning exploring Ushuaia or unwinding at the resort until our mid-afternoon transfer to the ship. Our Expedition Team and ship staff will greet you on board, followed by a safety and orientation briefing and Captain's welcome dinner.

#### Day 4-5, Drake Passage

Join our Polar Experts as they teach you about everything Antarctic, from wildlife to history; participate in our renowned Citizen Science program; or sit back and take in this fabled journey while catching exciting glimpses of wildlife. Grab your binoculars to identify the many seabirds that follow the ship as we cross the Antarctic Convergence into Antarctic waters and noticeably cooler temperatures.

#### Day 6-7, Antarctic Sound & Weddell Sea

We maneuver through the amazing channels and wildlife rich waters of the Antarctic Sound and Weddell Sea, the perfect place to spend a memorable holiday season. The Antarctic Sound is well known for its huge tabular icebergs and the Weddell Sea offers a unique geography unlike anywhere else on earth. Here we enjoy the abundance of wildlife such as Adélie penguins and seals as we keep on the lookout for hunting Orca.

#### Day 8-9, Antarctic Peninsula

We will make landfall on the peninsula, experiencing marvelous encounters with wildlife as we stroll the stunning shores and adventure around the region's spectacular bays and harbors. We'll also have an opportunity to attempt a sea ice landing, as

well as stop at several active scientific bases and historic landing sites.

#### Day 10, South Shetland Islands

The volcanic South Shetland Islands offer amazing abundance and beauty, so we'll hop into our inflatable Zodiac boats and spend as much time as possible exploring. Be prepared to marvel up close at nature's glory!

#### Day 11-12, Drake Passage

We leave this magical place and make our way north, once again crossing the legendary Drake Passage. We have one last hurrah as we celebrate the conclusion of our expedition with a special slideshow and a final meal together.

#### Day 13, Ushuaia Disembarkation

With huge smiles on weary, content faces, we disembark in the morning, letting you catch a flight to Buenos Aires or stay in Ushuaia for more sights and adventure.

#### Please Note:

Itineraries are subject to change.



## The Small Cruise Ship Collection

[www.small-cruise-ships.com](http://www.small-cruise-ships.com)

[small-cruise-ships.com](http://small-cruise-ships.com)

[info@small-cruise-ships.com](mailto:info@small-cruise-ships.com)

### YOUR SHIP: SEAVENTURE

**YOUR SHIP:**

**Seaventure**

**VESSEL TYPE:**

**LENGTH:**

**PASSENGER CAPACITY:**

**BUILT/REFURBISHED:**

A WORLD-CLASS SMALL SHIP EXPERIENCE Seaventure features a 1-A Super ice class rating -- the highest ice class awarded to passenger vessels. This means that we will be able to explore coves, bays, and channels that would previously have been forbidden to us. The ship also offers a host of new activities. There's a sauna, a fitness center, a custom-built citizen science lab, and heated saltwater pool. There is more storage space, which is important because it means we can carry more equipment, so that more of our guests can participate in activities like kayaking, snowshoeing, and camping. The common areas are larger and beautifully appointed, and the ship has two. Ship Facilities: Two Elevators serving all passenger decks Library with computers Fitness Center and Sauna Heated saltwater swimming pool Citizen Science Laboratory All Staterooms Feature: Exterior views Sitting area with chairs or sofa and table Complimentary Mini-Bar Flat Screen TV Telephone Safe to store your valuables Independent temperature controls Luxury toiletries Hair dryer



The Small Cruise Ship Collection

[www.small-cruise-ships.com](http://www.small-cruise-ships.com)

**01432 507 280** (within UK)

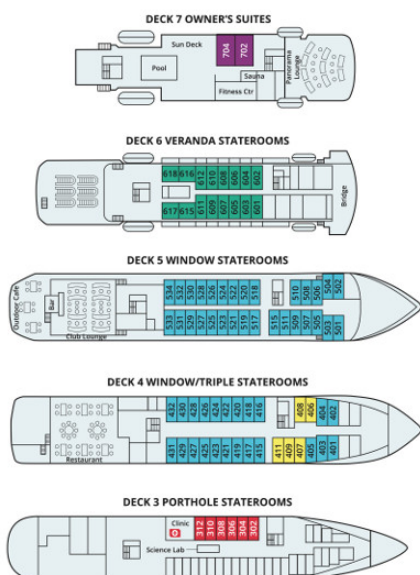
[info@small-cruise-ships.com](mailto:info@small-cruise-ships.com) | [small-cruise-ships.com](http://small-cruise-ships.com)



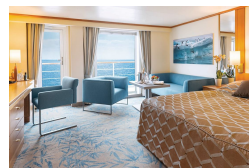
info@small-cruise-ships.com

## INSIDE YOUR SHIP

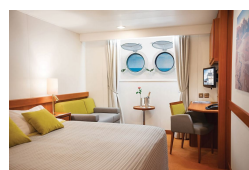
## MS SEAVENTURE



## Owners Suite



## Porthole Stateroom



### Triple Stateroom



Veranda Stateroom





# The Small Cruise Ship Collection

[www.small-cruise-ships.com](http://www.small-cruise-ships.com)



[small-cruise-ships.com](http://small-cruise-ships.com)

[info@small-cruise-ships.com](mailto:info@small-cruise-ships.com)

## PRICING

### 18-Dec-2024 to 30-Dec-2024

Veranda Stateroom	£14800 GBP pp
Window Stateroom	£12873 GBP pp
Triple Stateroom	£9989 GBP pp
Porthole Stateroom	£11490 GBP pp
Owners Suite	£20725 GBP pp

### 18-Dec-2025 to 29-Dec-2025

Owners Suite	£18209 GBP pp
Veranda Stateroom	£15175 GBP pp
Window Stateroom	£13199 GBP pp
Porthole Stateroom	£11785 GBP pp
Triple Stateroom	£10245 GBP pp



The Small Cruise Ship Collection

[www.small-cruise-ships.com](http://www.small-cruise-ships.com)

**01432 507 280** (within UK)

[info@small-cruise-ships.com](mailto:info@small-cruise-ships.com) | [small-cruise-ships.com](http://small-cruise-ships.com)