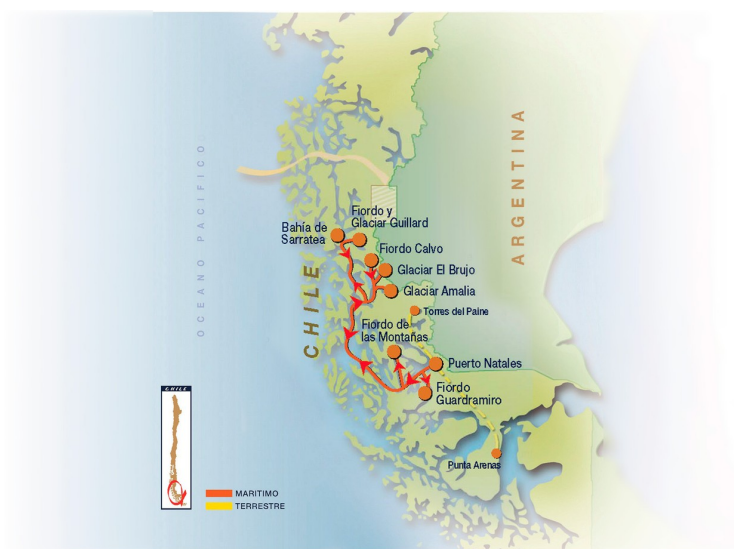




CHILE FJORDS CRUISE - KAWESKAR ROUTE

Join a 4-night, 5-day sea voyage to the Southern Patagonian Ice Field following the Kaweskar route, sailing 505 miles to visit the largest number of glaciers in this region: Guillard, Amalia, El Brujo (the Warlock), and the glaciers of Calvo, and Montanas fjords. We will visit some 15 glaciers where we will offer activities such as sightseeing, walks to the glacier front and moraines, and navigating between coloured icebergs in expedition boats such as Capitan Constantino (Captain Constantine). We will also keep an eye out for the varied flora and fauna of Patagonia, still in a wild and virgin state, such as the elephant seals in the Guardramiro fjord, condors, dolphins, sea lions and penguins. Set sail aboard the MS Skorprios III from mid October to mid April from the Skorprios Terminal in the city of Puerto Natales, located 2,500 km south of Santiago, which can be accessed by air from Punta Arenas or by land from Argentina.



ITINERARY

Day 1.

Day 1: Embarkation 10.30 AM - 12.00 PM. 1 p.m. Departure from Skorprios terminal. Ship safety talk, on a location to be indicated. 2 p.m. Lunch. Navigation in the Almirante Montt Gulf. 4.30 p.m. Arrival at Caleta Juarez in Guardramiro Fjord and disembark on boats to see up close a colony of elephant seals. 6 p.m. Departure, crossing Kirke narrows, Morla Vicuna, Union, Collingwood, and Sarmiento channels.

Embarkation: According to the program, the departure is at 01:00pm. Passengers must be on board at the latest at 12:00pm. The start of boarding is at 10:30am.



NB Important: On April 2024 the departures are going to be at 12:00pm and the boarding time at 11:00am and the start of boarding is at 09:30am, due to the official time change in Chile. The El Brujo Glacier landing may be cancelled, due to the winter time change.

Day 2: Fjords and glaciers

Day 2: 8 a.m. We continue sailing north through the Pitt Channel. On the port side, Chatham Island, to enter the Guillard Fjord at 10 a.m. Navigation within the fjord to the Guillard Glacier. 11 a.m. Disembark at the glacier and hike around the place. 1.30 p.m. Lunch. 3.30 p.m. Disembarkation on boats for a tour through the Glacier's channels. 5.00 p.m. Navigation to Sarratea Bay. 6.00 p.m. Disembarkation for a boat ride around the place. (This excursion depends on sunlight and weather conditions) 7 p.m. Return to the ship. 8.00 p.m. Dinner on board. 12.00 midnight. Departure southbound through the Pitt Channel.

Day 3: Fjords and glaciers

8 a.m. Arrival at Amalia Glacier. The ship approaches the glacier. Panoramic view from the ship. 9.30 a.m. Disembarkation at a nearby beach to hike through sand, vegetation, and rocks, reaching a viewpoint from where you can see this beautiful glacier. 11.30 a.m. Navigation to El Brujo (the Warlock) Glacier begins. 2.00 p.m. Arrival at El Brujo Glacier. If weather and ice conditions allow it, the passengers can go down

to see this glacier from a nearby rock. 3.30 p.m. Departure to the spectacular Calvo fjord. 5.10 p.m. Landfall at Calvo fjord, where we will make an excursion in a boat called Capitan Constantino (Captain Constantine), suitable for navigating among the ice, visiting Fernando, Capitan Constantino, and Alipio glaciers, among others. 8.00 p.m. Departure to the Fjord of the Mountains.

Day 4: Exploration, hiking and farewell dinner

9.00 a.m. Visit to the Fjord of the Mountains, where four glaciers can be observed which descend from the Sarmiento Mountain Range to the sea, two of which are in our logbook. 9.30 a.m. Visit to the Alsina Glacier, disembarkation in our exploration boats to visit this small bay and its eye-catching glacier, appreciating all its beauty and its enormous mountains that surround it. 10.30 a.m. Return to Skorpions III, we continue sailing through the Fjord of the Mountains towards the Bernal Glacier. 11.15 a.m. Disembarkation at the Glacier. The hike begins in the middle of a small native forest and then crosses a path across a small glacial water lagoon. We continue the hike over the frontal and lateral moraines until we reach the front of the Glacier. From here, we will have the opportunity to touch some ice and watch the receding phase of a glacier that no longer reaches the sea. 12.45 p.m. Passengers return to the ship, which is in a supplying maneuver acquiring pure, natural water from a waterfall. This is water consumed on board for all the ship's services. 2.00 p.m. The M/V Skorpions III continues sailing the Fjord of the Mountains. We will see the Herman and



Zamudio glaciers from the ship. 5.45 p.m. Crossing the White narrows. 9.00 p.m. Farewell party, Captain's dinner, dance. Navigation through Almirante Montt Gulf.

Day 5: Disembark Puerto Natales

Arrival in Puerto Natales between 2.00 and 7.00 a.m., depending on wind conditions, to dock at the Skorpis Terminal in Puerto Natales. 8.00 and 9.30 a.m. Disembarkation of passengers.



The Small Cruise
Ship Collection

www.small-cruise-ships.com

small-cruise-ships.com

info@small-cruise-ships.com

YOUR SHIP: SKORPIOS III

YOUR SHIP:

Skorpios III

VESSEL TYPE:

LENGTH:

PASSENGER CAPACITY:

BUILT/REFURBISHED:



Skorpios III has a capacity of up to 90 passengers berthed in 45 double cabins and distributed in 5 decks; cabins offer twin, queen or king-sized beds. All cabins have private toilet facilities, plasma TV and background music and a safety box. The ship has two comfortable bar lounges, and an ample panoramic dining room. MV Skorpios III was built in 1995 at the Skorpios shipyard, Chile, according to SOLAS and IMO rules, and ABS (American Bureau of Shipping) classification, class N° 951.93.18 A1 ice. Her cabins and hotel infrastructure were remodeled in 2012. Skorpios III is 70 metres long, has a 10 metre beam and a 3.30 metre draft, displacing 1,600 tons. She has an international loadline certificate, and registration N° 2869 issued by the Directorate General of Maritime Territory of Chile.



The Small Cruise
Ship Collection

www.small-cruise-ships.com

01432 507 280 (within UK)

info@small-cruise-ships.com | small-cruise-ships.com



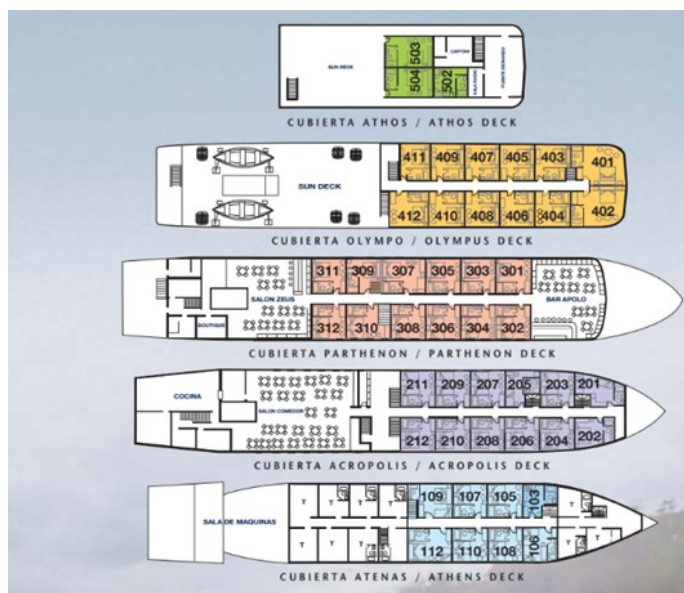
The Small Cruise Ship Collection

www.small-cruise-ships.com

small-cruise-ships.com

info@small-cruise-ships.com

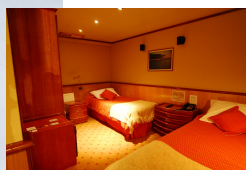
INSIDE YOUR SHIP



Acropolis Deck double/twin cabin

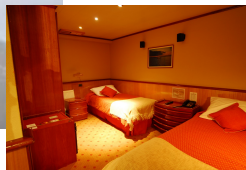


Atenas deck single cabin

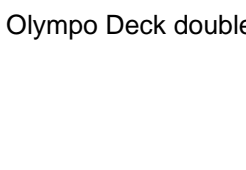


Atenas deck twin/double cabin

Athos deck Junior Suite



Athos deck double/twin cabin



Olympo Deck double/twin cabin

Olympo Deck Master double/twin Suite

Partenon Deck double/twin cabin



The Small Cruise Ship Collection

www.small-cruise-ships.com

small-cruise-ships.com

info@small-cruise-ships.com

PRICING

14-Oct-2024 to 18-Oct-2024

Partenon Deck double/twin cabin	£1873 GBP pp
Olympo Deck double/twin cabin	£1940 GBP pp
Athos deck double/twin cabin	£1873 GBP pp
Atenas deck single cabin	£2538 GBP pp
Olympo Deck Master double/twin Suite	£2276 GBP pp
Athos deck Junior Suite	£2074 GBP pp
Atenas deck twin/double cabin	£1692 GBP pp
Acropolis Deck double/twin cabin	£1779 GBP pp

19-Oct-2024 to 23-Oct-2024

Atenas deck twin/double cabin	£1692 GBP pp
Olympo Deck double/twin cabin	£1940 GBP pp
Atenas deck single cabin	£2538 GBP pp
Partenon Deck double/twin cabin	£1873 GBP pp
Olympo Deck Master double/twin Suite	£2276 GBP pp
Athos deck Junior Suite	£2074 GBP pp
Athos deck double/twin cabin	£1873 GBP pp
Acropolis Deck double/twin cabin	£1779 GBP pp

25-Oct-2024 to 29-Oct-2024

Atenas deck twin/double cabin	£1692 GBP pp
Olympo Deck Master double/twin Suite	£2276 GBP pp
Athos deck Junior Suite	£2074 GBP pp
Olympo Deck double/twin cabin	£1940 GBP pp
Partenon Deck double/twin cabin	£1873 GBP pp
Acropolis Deck double/twin cabin	£1779 GBP pp
Atenas deck single cabin	£2538 GBP pp
Athos deck double/twin cabin	£1873 GBP pp

30-Oct-2024 to 03-Nov-2024

Olympo Deck Master double/twin Suite	£2276 GBP pp
Athos deck Junior Suite	£2074 GBP pp
Athos deck double/twin cabin	£1873 GBP pp
Acropolis Deck double/twin cabin	£1779 GBP pp
Atenas deck twin/double cabin	£1692 GBP pp
Atenas deck single cabin	£2538 GBP pp
Partenon Deck double/twin cabin	£1873 GBP pp
Olympo Deck double/twin cabin	£1940 GBP pp



The Small Cruise Ship Collection

www.small-cruise-ships.com

small-cruise-ships.com

info@small-cruise-ships.com

PRICING

05-Nov-2024 to 09-Nov-2024

Olympo Deck Master double/twin Suite	£2276 GBP pp
Olympo Deck double/twin cabin	£1940 GBP pp
Athos deck double/twin cabin	£1873 GBP pp
Athos deck Junior Suite	£2074 GBP pp
Partenon Deck double/twin cabin	£1873 GBP pp
Acropolis Deck double/twin cabin	£1779 GBP pp
Atenas deck single cabin	£2538 GBP pp
Atenas deck twin/double cabin	£1692 GBP pp

10-Nov-2024 to 14-Nov-2024

Olympo Deck Master double/twin Suite	£2276 GBP pp
Atenas deck single cabin	£2538 GBP pp
Partenon Deck double/twin cabin	£1873 GBP pp
Athos deck double/twin cabin	£1873 GBP pp
Olympo Deck double/twin cabin	£1940 GBP pp
Acropolis Deck double/twin cabin	£1779 GBP pp
Atenas deck twin/double cabin	£1692 GBP pp
Athos deck Junior Suite	£2074 GBP pp

16-Nov-2024 to 20-Nov-2024

Athos deck double/twin cabin	£1873 GBP pp
Partenon Deck double/twin cabin	£1873 GBP pp
Acropolis Deck double/twin cabin	£1779 GBP pp
Olympo Deck Master double/twin Suite	£2276 GBP pp
Athos deck Junior Suite	£2074 GBP pp
Olympo Deck double/twin cabin	£1940 GBP pp
Atenas deck single cabin	£2538 GBP pp
Atenas deck twin/double cabin	£1692 GBP pp

21-Nov-2024 to 25-Nov-2024

Partenon Deck double/twin cabin	£1873 GBP pp
Olympo Deck double/twin cabin	£1940 GBP pp
Acropolis Deck double/twin cabin	£1779 GBP pp
Athos deck double/twin cabin	£1873 GBP pp
Atenas deck twin/double cabin	£1692 GBP pp
Atenas deck single cabin	£2538 GBP pp
Olympo Deck Master double/twin Suite	£2276 GBP pp
Athos deck Junior Suite	£2074 GBP pp



The Small Cruise Ship Collection

www.small-cruise-ships.com

small-cruise-ships.com

info@small-cruise-ships.com

PRICING

27-Nov-2024 to 01-Dec-2024

Atenas deck single cabin	£2538 GBP pp
Atenas deck twin/double cabin	£1692 GBP pp
Acropolis Deck double/twin cabin	£1779 GBP pp
Olympo Deck Master double/twin Suite	£2276 GBP pp
Athos deck Junior Suite	£2074 GBP pp
Partenon Deck double/twin cabin	£1873 GBP pp
Olympo Deck double/twin cabin	£1940 GBP pp
Athos deck double/twin cabin	£1873 GBP pp

02-Dec-2024 to 06-Dec-2024

Atenas deck single cabin	£2538 GBP pp
Partenon Deck double/twin cabin	£1873 GBP pp
Olympo Deck Master double/twin Suite	£2276 GBP pp
Athos deck Junior Suite	£2074 GBP pp
Acropolis Deck double/twin cabin	£1779 GBP pp
Athos deck double/twin cabin	£1873 GBP pp
Olympo Deck double/twin cabin	£1940 GBP pp
Atenas deck twin/double cabin	£1692 GBP pp

08-Dec-2024 to 12-Dec-2024

Athos deck Junior Suite	£2074 GBP pp
Atenas deck single cabin	£2538 GBP pp
Olympo Deck double/twin cabin	£1940 GBP pp
Acropolis Deck double/twin cabin	£1779 GBP pp
Partenon Deck double/twin cabin	£1873 GBP pp
Atenas deck twin/double cabin	£1692 GBP pp
Olympo Deck Master double/twin Suite	£2276 GBP pp
Athos deck double/twin cabin	£1873 GBP pp

13-Dec-2024 to 17-Dec-2024

Atenas deck single cabin	£2538 GBP pp
Partenon Deck double/twin cabin	£1873 GBP pp
Atenas deck twin/double cabin	£1692 GBP pp
Olympo Deck Master double/twin Suite	£2276 GBP pp
Olympo Deck double/twin cabin	£1940 GBP pp
Athos deck double/twin cabin	£1873 GBP pp
Athos deck Junior Suite	£2074 GBP pp
Acropolis Deck double/twin cabin	£1779 GBP pp



The Small Cruise Ship Collection

www.small-cruise-ships.com

01432 507 280 (within UK)

info@small-cruise-ships.com | small-cruise-ships.com



The Small Cruise Ship Collection

www.small-cruise-ships.com

small-cruise-ships.com

info@small-cruise-ships.com

PRICING

19-Dec-2024 to 23-Dec-2024

Athos deck double/twin cabin	£1873 GBP pp
Athos deck Junior Suite	£2074 GBP pp
Partenon Deck double/twin cabin	£1873 GBP pp
Atenas deck single cabin	£2538 GBP pp
Olympo Deck Master double/twin Suite	£2276 GBP pp
Olympo Deck double/twin cabin	£1940 GBP pp
Atenas deck twin/double cabin	£1692 GBP pp
Acropolis Deck double/twin cabin	£1779 GBP pp

24-Dec-2024 to 28-Dec-2024

Atenas deck twin/double cabin	£1826 GBP pp
Acropolis Deck double/twin cabin	£1920 GBP pp
Olympo Deck Master double/twin Suite	£2477 GBP pp
Partenon Deck double/twin cabin	£2001 GBP pp
Atenas deck single cabin	£2739 GBP pp
Athos deck Junior Suite	£2276 GBP pp
Olympo Deck double/twin cabin	£2101 GBP pp
Athos deck double/twin cabin	£2001 GBP pp

30-Dec-2024 to 03-Jan-2025

Athos deck Junior Suite	£2276 GBP pp
Olympo Deck double/twin cabin	£2101 GBP pp
Athos deck double/twin cabin	£2001 GBP pp
Atenas deck single cabin	£2739 GBP pp
Olympo Deck Master double/twin Suite	£2477 GBP pp
Acropolis Deck double/twin cabin	£1920 GBP pp
Partenon Deck double/twin cabin	£2001 GBP pp
Atenas deck twin/double cabin	£1826 GBP pp

04-Jan-2025 to 08-Jan-2025

Atenas deck twin/double cabin	£1826 GBP pp
Olympo Deck Master double/twin Suite	£2477 GBP pp
Partenon Deck double/twin cabin	£2001 GBP pp
Athos deck Junior Suite	£2276 GBP pp
Atenas deck single cabin	£2739 GBP pp
Athos deck double/twin cabin	£2001 GBP pp
Olympo Deck double/twin cabin	£2101 GBP pp
Acropolis Deck double/twin cabin	£1920 GBP pp



The Small Cruise Ship Collection

www.small-cruise-ships.com

small-cruise-ships.com

info@small-cruise-ships.com

PRICING

10-Jan-2025 to 14-Jan-2025

Atenas deck single cabin	£2739 GBP pp
Olympo Deck double/twin cabin	£2101 GBP pp
Acropolis Deck double/twin cabin	£1920 GBP pp
Olympo Deck Master double/twin Suite	£2477 GBP pp
Partenon Deck double/twin cabin	£2001 GBP pp
Athos deck Junior Suite	£2276 GBP pp
Athos deck double/twin cabin	£2001 GBP pp
Atenas deck twin/double cabin	£1826 GBP pp

15-Jan-2025 to 19-Jan-2025

Acropolis Deck double/twin cabin	£1920 GBP pp
Olympo Deck Master double/twin Suite	£2477 GBP pp
Atenas deck single cabin	£2739 GBP pp
Atenas deck twin/double cabin	£1826 GBP pp
Athos deck Junior Suite	£2276 GBP pp
Partenon Deck double/twin cabin	£2001 GBP pp
Olympo Deck double/twin cabin	£2101 GBP pp
Athos deck double/twin cabin	£2001 GBP pp

21-Jan-2025 to 25-Jan-2025

Atenas deck twin/double cabin	£1826 GBP pp
Athos deck double/twin cabin	£2001 GBP pp
Partenon Deck double/twin cabin	£2001 GBP pp
Athos deck double/twin cabin	£2276 GBP pp
Olympo Deck Master double/twin Suite	£2477 GBP pp
Atenas deck single cabin	£2739 GBP pp
Acropolis Deck double/twin cabin	£1920 GBP pp
Olympo Deck double/twin cabin	£2101 GBP pp

Atenas deck twin/double cabin	£1826 GBP pp
Olympo Deck double/twin cabin	£2101 GBP pp
Olympo Deck Master double/twin Suite	£2477 GBP pp
Partenon Deck double/twin cabin	£2001 GBP pp
Athos deck Junior Suite	£2276 GBP pp
Atenas deck single cabin	£2739 GBP pp
Athos deck double/twin cabin	£2001 GBP pp
Acropolis Deck double/twin cabin	£1920 GBP pp

26-Jan-2025 to 30-Jan-2025

Olympo Deck double/twin cabin	£2101 GBP pp
Acropolis Deck double/twin cabin	£1920 GBP pp
Atenas deck single cabin	£2739 GBP pp
Olympo Deck Master double/twin Suite	£2477 GBP pp
Athos deck Junior Suite	£2276 GBP pp
Athos deck double/twin cabin	£2001 GBP pp
Partenon Deck double/twin cabin	£2001 GBP pp
Atenas deck twin/double cabin	£1826 GBP pp



The Small Cruise Ship Collection

www.small-cruise-ships.com

01432 507 280 (within UK)

info@small-cruise-ships.com | small-cruise-ships.com



The Small Cruise Ship Collection

www.small-cruise-ships.com

small-cruise-ships.com

info@small-cruise-ships.com

PRICING

01-Feb-2025 to 05-Feb-2025

Atenas deck twin/double cabin	£1826 GBP pp
Atenas deck single cabin	£2739 GBP pp
Partenon Deck double/twin cabin	£2001 GBP pp
Acropolis Deck double/twin cabin	£1920 GBP pp
Olympo Deck Master double/twin Suite	£2477 GBP pp
Athos deck Junior Suite	£2276 GBP pp
Olympo Deck double/twin cabin	£2101 GBP pp
Athos deck double/twin cabin	£2001 GBP pp

06-Feb-2025 to 10-Feb-2025

Atenas deck single cabin	£2739 GBP pp
Olympo Deck double/twin cabin	£2101 GBP pp
Athos deck double/twin cabin	£2001 GBP pp
Olympo Deck Master double/twin Suite	£2477 GBP pp
Athos deck Junior Suite	£2276 GBP pp
Atenas deck twin/double cabin	£1826 GBP pp
Partenon Deck double/twin cabin	£2001 GBP pp
Acropolis Deck double/twin cabin	£1920 GBP pp

12-Feb-2025 to 16-Feb-2025

Athos deck Junior Suite	£2276 GBP pp
Atenas deck single cabin	£2739 GBP pp
Olympo Deck double/twin cabin	£2101 GBP pp
Athos deck double/twin cabin	£2001 GBP pp
Acropolis Deck double/twin cabin	£1920 GBP pp
Atenas deck twin/double cabin	£1826 GBP pp
Partenon Deck double/twin cabin	£2001 GBP pp
Olympo Deck Master double/twin Suite	£2477 GBP pp

17-Feb-2025 to 21-Feb-2025

Atenas deck twin/double cabin	£1826 GBP pp
Atenas deck single cabin	£2739 GBP pp
Olympo Deck Master double/twin Suite	£2477 GBP pp
Olympo Deck double/twin cabin	£2101 GBP pp
Acropolis Deck double/twin cabin	£1920 GBP pp
Athos deck Junior Suite	£2276 GBP pp
Athos deck double/twin cabin	£2001 GBP pp
Partenon Deck double/twin cabin	£2001 GBP pp



The Small Cruise Ship Collection

www.small-cruise-ships.com

small-cruise-ships.com

info@small-cruise-ships.com

PRICING

23-Feb-2025 to 27-Feb-2025

Athos deck Junior Suite	£2276 GBP pp
Athos deck double/twin cabin	£2001 GBP pp
Olympo Deck double/twin cabin	£2101 GBP pp
Atenas deck single cabin	£2739 GBP pp
Olympo Deck Master double/twin Suite	£2477 GBP pp
Partenon Deck double/twin cabin	£2001 GBP pp
Acropolis Deck double/twin cabin	£1920 GBP pp
Atenas deck twin/double cabin	£1826 GBP pp

28-Feb-2025 to 04-Mar-2025

Olympo Deck double/twin cabin	£2101 GBP pp
Partenon Deck double/twin cabin	£2001 GBP pp
Atenas deck single cabin	£2739 GBP pp
Olympo Deck Master double/twin Suite	£2477 GBP pp
Athos deck Junior Suite	£2276 GBP pp
Athos deck double/twin cabin	£2001 GBP pp
Atenas deck twin/double cabin	£1826 GBP pp
Acropolis Deck double/twin cabin	£1920 GBP pp

06-Mar-2025 to 10-Mar-2025

Atenas deck single cabin	£2538 GBP pp
Athos deck double/twin cabin	£1873 GBP pp
Olympo Deck Master double/twin Suite	£2276 GBP pp
Athos deck Junior Suite	£2074 GBP pp
Olympo Deck double/twin cabin	£1940 GBP pp
Acropolis Deck double/twin cabin	£1779 GBP pp
Partenon Deck double/twin cabin	£1873 GBP pp
Atenas deck twin/double cabin	£1692 GBP pp

11-Mar-2025 to 15-Mar-2025

Partenon Deck double/twin cabin	£1873 GBP pp
Olympo Deck double/twin cabin	£1940 GBP pp
Atenas deck single cabin	£2538 GBP pp
Olympo Deck Master double/twin Suite	£2276 GBP pp
Athos deck Junior Suite	£2074 GBP pp
Athos deck double/twin cabin	£1873 GBP pp
Acropolis Deck double/twin cabin	£1779 GBP pp
Atenas deck twin/double cabin	£1692 GBP pp



The Small Cruise Ship Collection

www.small-cruise-ships.com

01432 507 280 (within UK)

info@small-cruise-ships.com | small-cruise-ships.com



The Small Cruise Ship Collection

www.small-cruise-ships.com

small-cruise-ships.com

info@small-cruise-ships.com

PRICING

17-Mar-2025 to 21-Mar-2025

Atenas deck single cabin	£2538 GBP pp
Atenas deck twin/double cabin	£1692 GBP pp
Olympo Deck double/twin cabin	£1940 GBP pp
Olympo Deck Master double/twin Suite	£2276 GBP pp
Athos deck double/twin cabin	£1873 GBP pp
Partenon Deck double/twin cabin	£1873 GBP pp
Acropolis Deck double/twin cabin	£1779 GBP pp
Athos deck Junior Suite	£2074 GBP pp

22-Mar-2025 to 26-Mar-2025

Partenon Deck double/twin cabin	£1873 GBP pp
Acropolis Deck double/twin cabin	£1779 GBP pp
Athos deck Junior Suite	£2074 GBP pp
Atenas deck single cabin	£2538 GBP pp
Olympo Deck Master double/twin Suite	£2276 GBP pp
Olympo Deck double/twin cabin	£1940 GBP pp
Athos deck double/twin cabin	£1873 GBP pp
Atenas deck twin/double cabin	£1692 GBP pp

28-Mar-2025 to 01-Apr-2025

Partenon Deck double/twin cabin	£1873 GBP pp
Athos deck double/twin cabin	£1873 GBP pp
Athos deck Junior Suite	£2074 GBP pp
Atenas deck twin/double cabin	£1692 GBP pp
Acropolis Deck double/twin cabin	£1779 GBP pp
Olympo Deck Master double/twin Suite	£2276 GBP pp
Olympo Deck double/twin cabin	£1940 GBP pp
Atenas deck single cabin	£2538 GBP pp

02-Apr-2025 to 06-Apr-2025

Olympo Deck Master double/twin Suite	£2276 GBP pp
Athos deck double/twin cabin	£1873 GBP pp
Atenas deck single cabin	£2538 GBP pp
Atenas deck twin/double cabin	£1692 GBP pp
Olympo Deck double/twin cabin	£1940 GBP pp
Acropolis Deck double/twin cabin	£1779 GBP pp
Athos deck Junior Suite	£2074 GBP pp
Partenon Deck double/twin cabin	£1873 GBP pp



The Small Cruise Ship Collection

www.small-cruise-ships.com

01432 507 280 (within UK)

info@small-cruise-ships.com | small-cruise-ships.com



The Small Cruise Ship Collection

www.small-cruise-ships.com

small-cruise-ships.com

info@small-cruise-ships.com

PRICING

07-Apr-2025 to 11-Apr-2025

Atenas deck single cabin	£2538 GBP pp
Partenon Deck double/twin cabin	£1873 GBP pp
Athos deck Junior Suite	£2074 GBP pp
Athos deck double/twin cabin	£1873 GBP pp
Acropolis Deck double/twin cabin	£1779 GBP pp
Olympo Deck Master double/twin Suite	£2276 GBP pp
Olympo Deck double/twin cabin	£1940 GBP pp
Atenas deck twin/double cabin	£1692 GBP pp

12-Apr-2025 to 16-Apr-2025

Athos deck double/twin cabin	£1873 GBP pp
Acropolis Deck double/twin cabin	£1779 GBP pp
Athos deck Junior Suite	£2074 GBP pp
Partenon Deck double/twin cabin	£1873 GBP pp
Atenas deck single cabin	£2538 GBP pp
Olympo Deck Master double/twin Suite	£2276 GBP pp
Atenas deck twin/double cabin	£1692 GBP pp
Olympo Deck double/twin cabin	£1940 GBP pp

17-Apr-2025 to 21-Apr-2025

Olympo Deck double/twin cabin	£1940 GBP pp
Athos deck double/twin cabin	£1873 GBP pp
Athos deck Junior Suite	£2074 GBP pp
Olympo Deck Master double/twin Suite	£2276 GBP pp
Atenas deck single cabin	£2538 GBP pp
Partenon Deck double/twin cabin	£1873 GBP pp
Acropolis Deck double/twin cabin	£1779 GBP pp
Atenas deck twin/double cabin	£1692 GBP pp

23-Apr-2025 to 27-Apr-2025

Olympo Deck double/twin cabin	£1940 GBP pp
Atenas deck single cabin	£2538 GBP pp
Olympo Deck Master double/twin Suite	£2276 GBP pp
Athos deck Junior Suite	£2074 GBP pp
Partenon Deck double/twin cabin	£1873 GBP pp
Acropolis Deck double/twin cabin	£1779 GBP pp
Atenas deck twin/double cabin	£1692 GBP pp
Athos deck double/twin cabin	£1873 GBP pp

ADDITIONAL CHARGES:

Port fees 75 USD pp