

The Small Cruise Ship Collection

www.small-cruise-ships.com

small-cruise-ships.com

info@small-cruise-ships.com

AUSTRALIA'S ICONIC KIMBERLEY ABOARD LE JACQUES CARTIER

This cruise is intended for English-speaking passengers. All lectures, comments by naturalists during the outings and visits as well as the announcements and services on board will be in English. Set sail for the wild and grandiose landscapes of Kimberley, following an exceptional PONANT itinerary. From Darwin to Broome, embark for an 11-day expedition cruise to one of the last unspoiled regions on the planet. In one of the most picturesque parts of the region, the Hunter River, you will see wild mangrove forests where saltwater crocodiles live along with many species of birds. The highpoint of this cruise will undoubtedly be the discovery of the King George River and the majestic Twin Falls, the highest falls in Western Australia. During your cruise, the magnificent bays of Vansittart and Swift will offer you exceptional panoramas, between islands, secret inlets, caves and rocky overhangs. At Ashmore Reef, gaze out over the shades of blue of the Timor Sea off the mainland. The corals are home to extraordinary marine life in this incredibly beautiful paradise. You will also visit Collier Bay, where you will be able to admire the Montgomery Reef, home to vast expanses of lagoons and immense coral reefs. On the Lacepede Islands, take the time to admire the abundance of nesting birds as well as the large population of turtles residing in the lagoon. Your ship will take you along the most spectacular coasts in the entire region. With their falls, abrupt gorges, savannah, calm waters and desolate mountain chains, the wild lands of Kimberley are the promise of an exceptional adventure.



ITINERARY

Day 1 DARWIN

Darwin is located in Australia's Northern Territory which is also known as the "Top End". It is the capital city and the most populated town of the Northern Territory. Darwin is a beautiful tropical city, a melting pot of people and cultures, over 50 different cultures live and work side by side that prides itself in its unique and friendly laid-back lifestyle. Come discover the

The Small Cruise Ship Collection
www.small-cruise-ships.com

01432 507 280 (within UK)

info@small-cruise-ships.com | small-cruise-ships.com



town's still recent history through its emblematic buildings such as the new Parliament House opened in 1994, a magnificent example of tropical architecture or Admiralty House declared heritage place, a tropical-style home elevated on stilts that has survived two cyclones and numerous air raids.

Day 2 KING GEORGE RIVER

The journey up the King George River is nothing short of breathtaking. The 80-metre-high sides of the gorge display varying degrees of weathering of the ancient Warton sandstone. The colours and textures of the gorge change with the light as you travel further up the river creating a continual changing scenery that is simply stunning. The journey culminates at the King George twin falls; the highest single-drop falls in the whole of the Kimberley (80 m or 260 ft). Fed by wet season run-off the level of water cascading over the falls varies from year to year. Your Expedition Team will escort you in either the zodiacs or ships tenders to the foot of the twin falls, and explain all about the stunning geological formations of the canyon.

Day 3 VANSITTART BAY

Jar Island contains ancient rock art galleries depicting the Gwion Gwion style unique to the Kimberley region. Mainly neglected by, or unknown to, the early European researchers of Aboriginal culture in the Kimberley in favour of the dominant and more dramatic Wandjina art, Gwion Gwion art has in recent years gained world prominence. It is generally thought that this art may extend back to over 30,000 years before our time and represents the first wave of seagoing colonisers of the Australian

continent. As it is, these are the oldest detailed depiction of human figures in the world. Join your Expedition Team ashore for a short walk, past some fascinating rock formations, to the site of the Gwion Gwion art galleries.

Day 4 ASHMORE REEF

Located in the Timor Sea, the Ashmore Reef Marine Park is a sanctuary for many marine species and a designated important bird area (IBA). Every year, more than 100,000 seabirds breed here, including crested terns, white-tailed tropicbirds and greater frigatebirds. It was recognised as a wetland of international importance in 2003 for its vital role in providing a haven for the tens of thousands of migratory shorebirds which turn up to feed each year. In addition to the prolific birdlife, beneath the clear tropical waters, the coral reefs, seagrass meadows, sandflats and lagoons of Ashmore Reef are home to a colourful array of marine life including 255 species of reef building coral, the greatest number of any reef on the Western Australian coast. Ashmore Reef provides a unique opportunity to combine a zodiac tour to view the abundant birdlife and marine life with the opportunity to experience a magical moment snorkelling or a refreshing swim.

Day 5 CAREENING BAY

Careening Bay was named by Lieutenant Phillip Parker King after his ship, HMC Mermaid, was careened there during his third voyage of discovery in 1820. King surveyed the western coast to complete the map initiated by Flinders 20 years earlier. The Mermaid had been leaking badly and King needed to find a



The Small Cruise Ship Collection

www.small-cruise-ships.com

small-cruise-ships.com

info@small-cruise-ships.com

shallow sandy bay where he could careen his boat to undertake repairs. At a high tide, on a warm September afternoon, he ran the Mermaid onto the sands. For ten days the Mermaid crew worked hard before refloating the vessel. The ship's carpenter carved the name of the vessel and the year into a conspicuous boab tree. The famous boab tree is now 3 metres wide and National Heritage listed. A reminder of a by gone era of exploration!

Day 6 SWIFT BAY

The Bonaparte Archipelago, is a stunningly rugged maze of islands stretching almost 150 km along Western Australia's remote Kimberley coast. Its colour and scale conspire to take ones' breath away. Its distant location has meant it has remained an unspoilt and remarkably pristine location to explore and experience. Phillip Parker King named "Swift's bay" after Jonathon Swift (1667-1745) the author of Gulliver's travels. The 'T' shaped bay is composed of heavily fractured sandstone providing an abundance of rock shelters. On the walls of these shelters are examples of both Wandjina and Gwion Gwion style rock art. Join your expedition team ashore for a guided walk to a number of rock art galleries depicting these unique rock art styles.

Day 7 HUNTER RIVER

Arguably one of the most scenic parts of the Kimberley coast, Prince Frederick Harbour and the Hunter River are lined with ancient rainforest pockets, pristine mangroves and mosaic sandstone cliffs. They are considered to be some of the most

pristine mangrove forests in the world, containing up to 18 different species, supporting a rich and diverse fauna. The sandstone escarpment at the river mouth, known as "Kampamantiya" rises over 200 metres high before giving way to extensive mud banks and mangrove forests home to numerous bird species and the iconic saltwater crocodile. Our expert Expedition Team will share their knowledge with you as you explore this pristine mangrove environment by zodiac keeping a constant lookout for wildlife. You will also have the opportunity to reach the Mitchell Falls by helicopter from Naturalist Island beach.

Days 8 - 9 COLLIER BAY

Lying to the east of the Buccaneer archipelago, the ancient landscapes of Collier Bay have been shaped by the massive tidal movements the region is renowned for, creating a photographer's paradise. With a tidal range exceeding 14 metres, recorded near Yule entrance at the southern end of the bay, they are among the largest in the world. This massive daily movement of water creates unique phenomena that occur nowhere else in the world. Nestled in the centre of the Bay is Montgomery Reef, the world's largest inshore reef system. As the tide falls a raging torrent of water cascades off the top of the reef, creating turbulent 'rivers' and mini waterfalls. At the Southern end of the Bay, Talbot Bay is home to the world's only 'Horizontal Falls' described by Sir David Attenborough as "One of the greatest wonders of the natural world." Hidden in the many caves and grottos of this ancient landscape are a multitude of ancient Rock Art galleries. Here you can find spectacular examples of the Wandjina and Gwion Gwion styles.



As we are at the mercy of weather and tide conditions in this region, the activities mentioned above are only possible experiences and can't be guaranteed.

Day 10 LACEPEDE ISLANDS

The Lacepede Islands are Western Australia's most important breeding habitat for Green Turtles (*Chelonia mydas*), and have been named by BirdLife International as an Important Bird Area (IBA). The breeding colony of Brown Boobies is possibly the largest in the world. Up to 20,000 Roseate Terns have also been recorded here. Other birds breeding on the islands include Masked Boobies, Australian Pelicans, Lesser Frigatebirds, Eastern Reef Egrets, Silver Gulls, Crested, Bridled and Lesser Crested Terns, Common Noddies, Pied and Sooty Oystercatchers. Join your expedition team for a guided zodiac tour to view the prolific wildlife. Due to the sensitive nature of the environment, landings are prohibited on the Lacepede Islands.

Day 11 BROOME

Located in the northwest of the Kimberley region and in the far north of Western Australia, the town of Broome is reputed for its history and its glorious pearling era. The fascinating Chinatown district, which is the historic city centre, and the famous Japanese Cemetery, dates back to 1896, and has a past marked by the immigration of numerous Chinese and Japanese workers, attracted by the prosperous pearl industry at the end of the 19th century and at the beginning of the 20th century. Broome is also famous for the "Staircase to the Moon", an

optical illusion created by the Moon reflecting on the sand banks at low tide, like a staircase climbing up towards the sky, a unique spectacle provided by nature...

Please Note:

We are privileged guests in these extreme lands where we are at the mercy of weather and tide conditions. Landings on certain sites and the observation of certain wildlife cannot be guaranteed. They vary from day to day, making each PONANT cruise a unique experience. The Captain and the Expedition Leader will make every effort to ensure that your experience is as rich as possible, whilst complying with the necessary safety rules and precautions.



The Small Cruise Ship Collection

www.small-cruise-ships.com

small-cruise-ships.com

info@small-cruise-ships.com

YOUR SHIP: LE JACQUES CARTIER

YOUR SHIP: Le Jacques Cartier

VESSEL TYPE:

LENGTH:

PASSENGER CAPACITY:

BUILT/REFURBISHED:

Featuring innovative and environmentally-friendly equipment, elegantly designed staterooms, spacious suites with large windows, and lounge areas that open onto the outside, this new limited-capacity yacht boasting just 92 staterooms and suites will offer you a truly unique cruising experience. Le Jacques Cartier will embody refinement, intimacy and comfort. Aboard this ship that flies the French flag, you will experience the incomparable pleasure of an intimate cruise, with the possibility of exploring an ever-increasing range of destinations in an ethnic-chic ambiance with luxury service. Experience a luxurious setting where the accent is on authenticity and passion for travel. **RESTAURANTS** As it is an essential part of French culture, gastronomy will naturally have pride of place aboard this new ship. To the back of Deck 4, you will find a 260 m² panoramic restaurant which can accommodate all of our passengers in a single sitting. Designed differently to that on our other ships, this dining area, which opens onto the outside, will have a buffet of salads, desserts and cheeses at your disposal. Our discreet and attentive crew will provide table service for hot meals. In a relaxed atmosphere, an outdoor grill on Deck 3 will serve grilled meats with a variety of salads and desserts. **PUBLIC AREAS** Le

Jacques Cartier has many common areas that are designed and equipped to meet all of your needs while preserving the intimacy of each passenger. A 140 m² reception area includes: A reception/concierge desk, An excursions desk, The ship's administrative services, The sales office, manned by our Guest Relations Officer, Our 50 m² boutique which sells clothing, jewellery, beauty products, postcards and various accessories, Toilets accessible to passengers with reduced mobility. A new hydraulic platform with adjustable height provides: Easier boarding than on any other cruise ship, Easier Zodiac embarkation and disembarkation for expeditions, Easier access to the sea for swimming and practising various water sports such as kayaking or paddle-boarding. A pool deck offering: A pool with a panoramic view, equipped with a counter-current swimming system, A pleasant solarium, An outdoor bar and lounge with armchairs and sofas. A 200 m² main lounge which can accommodate all of our passengers to share convivial moments and to host activities organised during the day or evening. Lastly, a theatre that seats 188, equipped with: The latest sound and lighting technology, A LED wall as the stage backdrop, for the projection of high-resolution images and videos. Please click the following links to read more about Ponant and the other Ponant



The Small Cruise Ship Collection

www.small-cruise-ships.com



small-cruise-ships.com

info@small-cruise-ships.com



cruise ships.

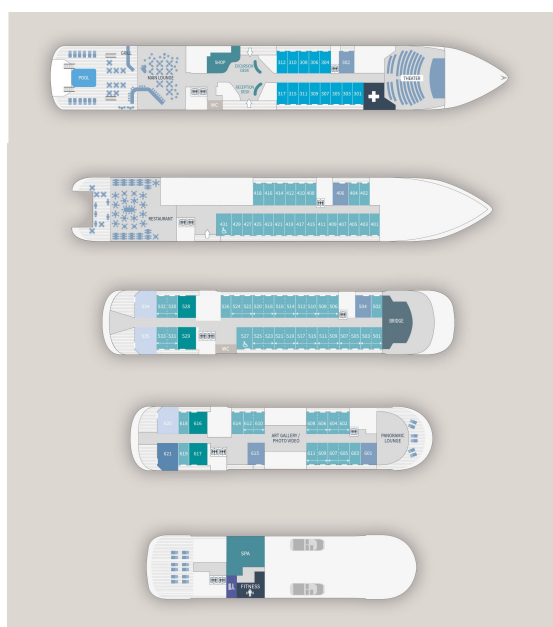
The Small Cruise Ship Collection

www.small-cruise-ships.com

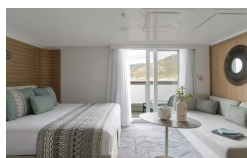
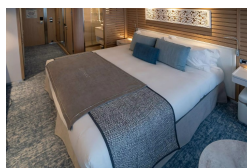
small-cruise-ships.com

info@small-cruise-ships.com

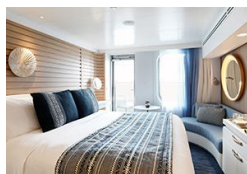
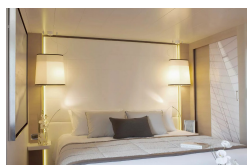
INSIDE YOUR SHIP



DELUXE STATEROOM



DeLuxe Stateroom



DELUXE SUITE

Deluxe Stateroom

Deluxe Suite

Grand Deluxe Suite

Owner's Suite

PRESTIGE STATEROOM DECK 4

PRESTIGE STATEROOM DECK 6

PRESTIGE SUITE DECK 6

PRIVILEGE SUITE

Prestige Stateroom - Deck 5

GRAND DELUXE SUITE

OWNER'S SUITE

Owner's Suite

PRESTIGE STATEROOM DECK 5

PRESTIGE SUITE DECK 5

PRESTIGE SUITE DECK 6

Prestige Stateroom - Deck 4

Prestige Stateroom - Deck 6



Prestige Stateroom Deck 4

Prestige Stateroom Deck 5

Prestige Stateroom Deck 6

Prestige Suite - Deck 5

Prestige Suite - Deck 6

Prestige Suite Deck 5

Prestige Suite Deck 6

Privilege Suite

The Small Cruise Ship Collection

www.small-cruise-ships.com

small-cruise-ships.com

info@small-cruise-ships.com

PRICING

22-May-2024 to 01-Jun-2024

PRESTIGE STATEROOM DECK 4	£9313 GBP pp
DELUXE SUITE	£13655 GBP pp
PRESTIGE SUITE DECK 5	£16551 GBP pp
PRESTIGE SUITE DECK 6	£17326 GBP pp
PRESTIGE STATEROOM DECK 6	£10379 GBP pp
PRESTIGE STATEROOM DECK 5	£9796 GBP pp
GRAND DELUXE SUITE	£18480 GBP pp
PRIVILEGE SUITE	£17908 GBP pp
OWNER'S SUITE	£19063 GBP pp
DELUXE STATEROOM	£8346 GBP pp

01-Jun-2024 to 11-Jun-2024

OWNER'S SUITE	£17342 GBP pp
PRESTIGE SUITE DECK 5	£15059 GBP pp
DELUXE SUITE	£12426 GBP pp
GRAND DELUXE SUITE	£16813 GBP pp
PRIVILEGE SUITE	£16283 GBP pp
PRESTIGE SUITE DECK 6	£15763 GBP pp
PRESTIGE STATEROOM DECK 6	£9448 GBP pp
PRESTIGE STATEROOM DECK 5	£8918 GBP pp
DELUXE STATEROOM	£7599 GBP pp
PRESTIGE STATEROOM DECK 4	£8479 GBP pp

03-Jun-2024 to 13-Jun-2024

Prestige Stateroom Deck 6	£10379 GBP pp
Prestige Suite Deck 5	£16551 GBP pp
Deluxe Suite	£13655 GBP pp
Deluxe Stateroom	£8346 GBP pp
Prestige Suite Deck 6	£17326 GBP pp
Prestige Stateroom Deck 4	£9313 GBP pp
Owner's Suite	£19063 GBP pp
Grand Deluxe Suite	£18480 GBP pp
Prestige Stateroom Deck 5	£9796 GBP pp
Privilege Suite	£17908 GBP pp

The Small Cruise Ship Collection

www.small-cruise-ships.com

small-cruise-ships.com

info@small-cruise-ships.com

PRICING

11-Jun-2024 to 21-Jun-2024

PRESTIGE STATEROOM DECK 5	£9796 GBP pp
PRESTIGE STATEROOM DECK 6	£10379 GBP pp
PRIVILEGE SUITE	£17908 GBP pp
DELUXE STATEROOM	£8346 GBP pp
PRESTIGE SUITE DECK 5	£16551 GBP pp
PRESTIGE SUITE DECK 6	£17326 GBP pp
PRESTIGE STATEROOM DECK 4	£9313 GBP pp
OWNER'S SUITE	£19063 GBP pp
GRAND DELUXE SUITE	£18480 GBP pp
DELUXE SUITE	£13655 GBP pp

23-Jun-2024 to 03-Jul-2024

Prestige Suite Deck 5	£16551 GBP pp
Privilege Suite	£17908 GBP pp
Deluxe Stateroom	£8346 GBP pp
Prestige Stateroom Deck 4	£9313 GBP pp
Grand Deluxe Suite	£18480 GBP pp
Prestige Suite Deck 6	£17326 GBP pp
Prestige Stateroom Deck 6	£10379 GBP pp
Prestige Stateroom Deck 5	£9796 GBP pp
Deluxe Suite	£13655 GBP pp
Owner's Suite	£19063 GBP pp

01-Jul-2024 to 11-Jul-2024

GRAND DELUXE SUITE	£18480 GBP pp
DELUXE STATEROOM	£8346 GBP pp
OWNER'S SUITE	£19063 GBP pp
PRESTIGE STATEROOM DECK 4	£9313 GBP pp
DELUXE SUITE	£13655 GBP pp
PRESTIGE STATEROOM DECK 5	£9796 GBP pp
PRIVILEGE SUITE	£17908 GBP pp
PRESTIGE SUITE DECK 6	£17326 GBP pp
PRESTIGE SUITE DECK 5	£16551 GBP pp
PRESTIGE STATEROOM DECK 6	£10379 GBP pp

The Small Cruise Ship Collection

www.small-cruise-ships.com

small-cruise-ships.com

info@small-cruise-ships.com

PRICING

11-Jul-2024 to 21-Jul-2024

PRESTIGE STATEROOM DECK 6	£9448 GBP pp
DELUXE STATEROOM	£7599 GBP pp
PRESTIGE SUITE DECK 5	£15059 GBP pp
PRESTIGE STATEROOM DECK 5	£8918 GBP pp
OWNER'S SUITE	£17342 GBP pp
PRESTIGE SUITE DECK 6	£15763 GBP pp
PRESTIGE STATEROOM DECK 4	£8479 GBP pp
DELUXE SUITE	£12426 GBP pp
GRAND DELUXE SUITE	£16813 GBP pp
PRIVILEGE SUITE	£16293 GBP pp

13-Jul-2024 to 23-Jul-2024

Deluxe Stateroom	£8346 GBP pp
Prestige Stateroom Deck 6	£10379 GBP pp
Privilege Suite	£17908 GBP pp
Prestige Stateroom Deck 4	£9313 GBP pp
Grand Deluxe Suite	£18480 GBP pp
Prestige Stateroom Deck 5	£9796 GBP pp
Owner's Suite	£19063 GBP pp
Prestige Suite Deck 6	£17326 GBP pp
Deluxe Suite	£13655 GBP pp
Prestige Suite Deck 5	£16551 GBP pp

21-Jul-2024 to 31-Jul-2024

DELUXE STATEROOM	£8346 GBP pp
DELUXE SUITE	£13655 GBP pp
OWNER'S SUITE	£19063 GBP pp
PRESTIGE SUITE DECK 6	£17326 GBP pp
PRIVILEGE SUITE	£17908 GBP pp
PRESTIGE STATEROOM DECK 5	£9796 GBP pp
PRESTIGE STATEROOM DECK 4	£9313 GBP pp
PRESTIGE SUITE DECK 5	£16551 GBP pp
PRESTIGE STATEROOM DECK 6	£10379 GBP pp
GRAND DELUXE SUITE	£18480 GBP pp

The Small Cruise Ship Collection

www.small-cruise-ships.com

small-cruise-ships.com

info@small-cruise-ships.com

PRICING

31-Jul-2024 to 10-Aug-2024

PRESTIGE STATEROOM DECK 5	£8918 GBP pp
GRAND DELUXE SUITE	£16813 GBP pp
PRIVILEGE SUITE	£16293 GBP pp
PRESTIGE SUITE DECK 5	£15059 GBP pp
PRESTIGE STATEROOM DECK 4	£8479 GBP pp
PRESTIGE STATEROOM DECK 6	£9448 GBP pp
OWNER'S SUITE	£17342 GBP pp
DELUXE SUITE	£12426 GBP pp
PRESTIGE SUITE DECK 6	£15763 GBP pp
DELUXE STATEROOM	£7599 GBP pp

02-Aug-2024 to 12-Aug-2024

Prestige Stateroom Deck 4	£9313 GBP pp
Prestige Stateroom Deck 6	£10379 GBP pp
Deluxe Suite	£13655 GBP pp
Grand Deluxe Suite	£18480 GBP pp
Deluxe Stateroom	£8346 GBP pp
Privilege Suite	£17908 GBP pp
Prestige Suite Deck 6	£17326 GBP pp
Owner's Suite	£19063 GBP pp
Prestige Stateroom Deck 5	£9796 GBP pp
Prestige Suite Deck 5	£16551 GBP pp

10-Aug-2024 to 20-Aug-2024

PRIVILEGE SUITE	£16104 GBP pp
GRAND DELUXE SUITE	£16624 GBP pp
PRESTIGE STATEROOM DECK 6	£9313 GBP pp
PRESTIGE STATEROOM DECK 4	£8356 GBP pp
PRESTIGE SUITE DECK 5	£14887 GBP pp
OWNER'S SUITE	£17144 GBP pp
DELUXE STATEROOM	£7493 GBP pp
PRESTIGE SUITE DECK 6	£15579 GBP pp
DELUXE SUITE	£12277 GBP pp
PRESTIGE STATEROOM DECK 5	£8798 GBP pp

The Small Cruise Ship Collection

www.small-cruise-ships.com

small-cruise-ships.com

info@small-cruise-ships.com

PRICING

20-Aug-2024 to 30-Aug-2024

PRESTIGE STATEROOM DECK 4	£8479 GBP pp
GRAND DELUXE SUITE	£16813 GBP pp
PRIVILEGE SUITE	£16293 GBP pp
OWNER'S SUITE	£17342 GBP pp
DELUXE SUITE	£12426 GBP pp
PRESTIGE SUITE DECK 5	£15059 GBP pp
PRESTIGE SUITE DECK 6	£15763 GBP pp
DELUXE STATEROOM	£7599 GBP pp
PRESTIGE STATEROOM DECK 5	£8918 GBP pp
PRESTIGE STATEROOM DECK 6	£9448 GBP pp

22-Aug-2024 to 01-Sep-2024

Prestige Suite Deck 5	£16551 GBP pp
Owner's Suite	£19063 GBP pp
Prestige Suite Deck 6	£17326 GBP pp
Privilege Suite	£17908 GBP pp
Prestige Stateroom Deck 6	£10379 GBP pp
Grand Deluxe Suite	£18480 GBP pp
Prestige Stateroom Deck 5	£9796 GBP pp
Deluxe Stateroom	£8346 GBP pp
Deluxe Suite	£13655 GBP pp
Prestige Stateroom Deck 4	£9313 GBP pp

30-Aug-2024 to 09-Sep-2024

PRIVILEGE SUITE	£17908 GBP pp
DELUXE STATEROOM	£8346 GBP pp
PRESTIGE SUITE DECK 6	£17326 GBP pp
OWNER'S SUITE	£19063 GBP pp
PRESTIGE STATEROOM DECK 6	£10379 GBP pp
PRESTIGE STATEROOM DECK 5	£9796 GBP pp
GRAND DELUXE SUITE	£18480 GBP pp
DELUXE SUITE	£13655 GBP pp
PRESTIGE STATEROOM DECK 4	£9313 GBP pp
PRESTIGE SUITE DECK 5	£16551 GBP pp

The Small Cruise Ship Collection

www.small-cruise-ships.com

small-cruise-ships.com

info@small-cruise-ships.com

PRICING

09-Sep-2024 to 19-Sep-2024

DELUXE STATEROOM	£7599 GBP pp
PRESTIGE STATEROOM DECK 6	£9448 GBP pp
OWNER'S SUITE	£17342 GBP pp
PRESTIGE SUITE DECK 5	£15059 GBP pp
PRIVILEGE SUITE	£16293 GBP pp
PRESTIGE SUITE DECK 6	£15763 GBP pp
PRESTIGE STATEROOM DECK 4	£8479 GBP pp
PRESTIGE STATEROOM DECK 5	£8918 GBP pp
DELUXE SUITE	£12426 GBP pp
GRAND DELUXE SUITE	£16813 GBP pp

11-Sep-2024 to 21-Sep-2024

Prestige Stateroom Deck 5	£9796 GBP pp
Deluxe Stateroom	£8346 GBP pp
Owner's Suite	£19063 GBP pp
Grand Deluxe Suite	£18480 GBP pp
Privilege Suite	£17908 GBP pp
Prestige Stateroom Deck 6	£10379 GBP pp
Prestige Suite Deck 5	£16551 GBP pp
Deluxe Suite	£13655 GBP pp
Prestige Stateroom Deck 4	£9313 GBP pp
Prestige Suite Deck 6	£17326 GBP pp

19-Sep-2024 to 29-Sep-2024

PRESTIGE SUITE DECK 5	£16551 GBP pp
OWNER'S SUITE	£19063 GBP pp
PRIVILEGE SUITE	£17908 GBP pp
DELUXE SUITE	£13655 GBP pp
PRESTIGE STATEROOM DECK 4	£9313 GBP pp
PRESTIGE STATEROOM DECK 5	£9796 GBP pp
PRESTIGE STATEROOM DECK 6	£10379 GBP pp
GRAND DELUXE SUITE	£18480 GBP pp
PRESTIGE SUITE DECK 6	£17326 GBP pp
DELUXE STATEROOM	£8346 GBP pp

The Small Cruise Ship Collection

www.small-cruise-ships.com

small-cruise-ships.com

info@small-cruise-ships.com

PRICING

29-Sep-2024 to 09-Oct-2024

PRESTIGE SUITE DECK 5	£15059 GBP pp
DELUXE SUITE	£12426 GBP pp
PRESTIGE STATEROOM DECK 5	£8918 GBP pp
PRESTIGE STATEROOM DECK 4	£8479 GBP pp
PRIVILEGE SUITE	£16293 GBP pp
DELUXE STATEROOM	£7599 GBP pp
PRESTIGE STATEROOM DECK 6	£9448 GBP pp
PRESTIGE SUITE DECK 6	£15763 GBP pp
GRAND DELUXE SUITE	£16813 GBP pp
OWNER'S SUITE	£17342 GBP pp

24-May-2025 to 03-Jun-2025

OWNER'S SUITE	£19853 GBP pp
PRESTIGE SUITE DECK 5	£17243 GBP pp
DELUXE SUITE	£14227 GBP pp
GRAND DELUXE SUITE	£19245 GBP pp
PRIVILEGE SUITE	£18647 GBP pp
DELUXE STATEROOM	£8715 GBP pp
PRESTIGE STATEROOM DECK 4	£9713 GBP pp
PRESTIGE SUITE DECK 6	£18049 GBP pp
PRESTIGE STATEROOM DECK 5	£10218 GBP pp
PRESTIGE STATEROOM DECK 6	£10816 GBP pp

13-Jun-2025 to 23-Jun-2025

PRESTIGE STATEROOM DECK 6	£10816 GBP pp
PRESTIGE STATEROOM DECK 5	£10218 GBP pp
DELUXE STATEROOM	£8715 GBP pp
PRESTIGE STATEROOM DECK 4	£9713 GBP pp
PRESTIGE SUITE DECK 6	£18049 GBP pp
PRIVILEGE SUITE	£18647 GBP pp
GRAND DELUXE SUITE	£19245 GBP pp
PRESTIGE SUITE DECK 5	£17243 GBP pp
OWNER'S SUITE	£19853 GBP pp
DELUXE SUITE	£14227 GBP pp

The Small Cruise Ship Collection

www.small-cruise-ships.com

small-cruise-ships.com

info@small-cruise-ships.com

PRICING

02-Jul-2025 to 12-Jul-2025

DeLuxe Stateroom	£8715 GBP pp
Owner's Suite	£19853 GBP pp
Prestige Stateroom - Deck 5	£10218 GBP pp
Prestige Stateroom - Deck 6	£10816 GBP pp
Prestige Stateroom - Deck 4	£9713 GBP pp
Prestige Suite - Deck 6	£18049 GBP pp
Deluxe Suite	£14227 GBP pp
Prestige Suite - Deck 5	£17243 GBP pp
Superior Stateroom	£8008 GBP pp

03-Jul-2025 to 13-Jul-2025

DELUXE SUITE	£14227 GBP pp
PRESTIGE STATEROOM DECK 4	£9713 GBP pp
PRESTIGE STATEROOM DECK 6	£10816 GBP pp
GRAND DELUXE SUITE	£19245 GBP pp
DELUXE STATEROOM	£8715 GBP pp
PRESTIGE SUITE DECK 5	£17243 GBP pp
PRESTIGE SUITE DECK 6	£18049 GBP pp
OWNER'S SUITE	£19853 GBP pp
PRIVILEGE SUITE	£18647 GBP pp
PRESTIGE STATEROOM DECK 5	£10218 GBP pp

23-Jul-2025 to 02-Aug-2025

PRIVILEGE SUITE	£18647 GBP pp
PRESTIGE STATEROOM DECK 6	£10816 GBP pp
PRESTIGE STATEROOM DECK 5	£10218 GBP pp
GRAND DELUXE SUITE	£19245 GBP pp
PRESTIGE SUITE DECK 5	£17243 GBP pp
PRESTIGE SUITE DECK 6	£18049 GBP pp
DELUXE STATEROOM	£8715 GBP pp
OWNER'S SUITE	£19853 GBP pp
PRESTIGE STATEROOM DECK 4	£9713 GBP pp
DELUXE SUITE	£14227 GBP pp

The Small Cruise Ship Collection

www.small-cruise-ships.com

small-cruise-ships.com

info@small-cruise-ships.com

PRICING

01-Aug-2025 to 11-Aug-2025

Owner's Suite	£19853 GBP pp
Deluxe Suite	£14227 GBP pp
Prestige Suite - Deck 5	£17243 GBP pp
DeLuxe Stateroom	£8715 GBP pp
Prestige Stateroom - Deck 4	£9713 GBP pp
Prestige Suite - Deck 6	£18049 GBP pp
Superior Stateroom	£8008 GBP pp
Prestige Stateroom - Deck 5	£10218 GBP pp
Prestige Stateroom - Deck 6	£10816 GBP pp

22-Aug-2025 to 01-Sep-2025

DELUXE SUITE	£14227 GBP pp
PRESTIGE STATEROOM DECK 4	£9713 GBP pp
PRESTIGE STATEROOM DECK 6	£10816 GBP pp
PRESTIGE STATEROOM DECK 5	£10218 GBP pp
DELUXE STATEROOM	£8715 GBP pp
OWNER'S SUITE	£19853 GBP pp
PRESTIGE SUITE DECK 5	£17243 GBP pp
PRESTIGE SUITE DECK 6	£18049 GBP pp
PRIVILEGE SUITE	£18647 GBP pp
GRAND DELUXE SUITE	£19245 GBP pp

11-Sep-2025 to 21-Sep-2025

DELUXE SUITE	£14227 GBP pp
PRESTIGE SUITE DECK 5	£17243 GBP pp
DELUXE STATEROOM	£8715 GBP pp
PRESTIGE SUITE DECK 6	£18049 GBP pp
PRESTIGE STATEROOM DECK 4	£9713 GBP pp
OWNER'S SUITE	£19853 GBP pp
PRIVILEGE SUITE	£18647 GBP pp
GRAND DELUXE SUITE	£19245 GBP pp
PRESTIGE STATEROOM DECK 5	£10218 GBP pp
PRESTIGE STATEROOM DECK 6	£10816 GBP pp

ADDITIONAL CHARGES:

Port Taxes & Fees 740 AUD pp