



ATLANTIC SHORES AND THE CHANNEL COASTLINE - PORTUGAL, SPAIN AND FRANCE LUXURY CRUISE

From Lisbon to London, PONANT invites you on an unforgettable cruise along the Portuguese, Spanish, French and British Atlantic coastlines. A 15-day circuit filled with discoveries aboard Le Bellot. Throughout your journey, you will benefit from an excursion included per person per port of call, to choose from a selection offered by PONANT. During this cruise, explore the Santiago de Compostela site from Vigo, visit the Guggenheim Museum in Bilbao or discover the aptly-named Belle-Île-en-Mer from Quiberon. The diversity of experiences on offer promises you intense and varied moments (to discover the full range of excursions, go to the itinerary tab). After boarding in Lisbon, you make a port of call in Leixoes, before heading on to Porto. The capital of the northern region, this 'city of granite' is not only known for its wine, but also for its remarkable historic town centre, which is listed as a UNESCO World Heritage Site. Your journey continues to Galicia and the city of Vigo, the biggest fishing port in Spain. Not far from here, Santiago de Compostela awaits you. This unmissable pilgrimage destination is home to a number of monuments from the Romanesque, Gothic and Baroque periods, testimony to its illustrious past. Le Bellot then heads for the capital of the Spanish Basque Country, Bilbao. Between daring architecture and the continuation of its ancestral traditions, you can witness the city's unique energy. Your ship sets sail for Bordeaux, the wine capital of the world, then Royan, a seaside resort located at the mouth of the Gironde estuary, before moving up towards the Breton coasts in Quiberon, the embarkation port for Belle-Île-en-Mer, Houat and Hoedic. You sail around the tip of the Finistère and reach Roscoff, a former city of corsairs that is labelled a "Small Town

The Small Cruise Ship Collection

www.small-cruise-ships.com

small-cruise-ships.com

info@small-cruise-ships.com

with Character". During your stop in Saint-Malo, a town famous for the legendary Route du Rhum yacht race, lose yourself in the diversity of its heritage, stroll along its rampart and fall under the charm of the city of privateers. Le Bellot crosses the English Channel and drop anchor at the spellbinding Channel Island of Guernsey, marked by the long exile of Victor Hugo. Then, you make your way to Dartmouth, a charming town tucked away in the heart of the stunning decor formed by the mouth of the Dart. You discover its old pastel-coloured fishermen's houses and some half-timbered buildings. Your journey comes to an end in London, the cosmopolitan capital of the United Kingdom, rich with historical heritage and exceptional avant

Portugal's capital city located on the banks of the Tagus, only a few kilometres from the Atlantic coast, is a city of exceptionally rich cultural diversity. At the mouth of the river harbour, impose two UNESCO World Heritage monuments, Jeronimos monastery and Belem tower. The Alfama hillside is also worth visiting: known for its fado bars and its Moorish streets, this district is the oldest one of the city and one of the most typical. Not far from there, Chiado's elegant streets are home to big fashion labels and are an invitation to a bit of of luxury shopping.

Day 2 LEIXÕES - PORTO

Located at the mouth of the Douro River, the port of Leixoes lies less than 10 kilometres from Porto. A UNESCO World Heritage Site, the historic centre of Porto is worth a visit for its famous Ribeira district, the metallic silhouette of the Dom-Luis bridge looming over its ancient houses, its richly decorated Baroque churches and its national Soares dos Reis museum. The Sao Bento station is also interesting for its typically Portuguese decoration, using Azulejos, blue square ceramic tiles decorated with geometric patterns or figurative scenes.

Day 3 VIGO - SANTIAGO DE COMPOSTELA



-garde art.

ITINERARY

Day 1 LISBON

The Small Cruise Ship Collection
www.small-cruise-ships.com

01432 507 280 (within UK)

info@small-cruise-ships.com | small-cruise-ships.com



The Small Cruise Ship Collection

www.small-cruise-ships.com

small-cruise-ships.com

info@small-cruise-ships.com

Day 5 BILBAO

Nestling on the Atlantic coast, in the south of Galicia, the former fishing port of Vigo is now the region's largest municipality. Its old town, more commonly known as O Berbes, will unveil its many historical monuments and the unusual architectural style of its homes. Off the coast, the Cies Islands, declared a Nature Reserve and located in the Atlantic Islands of Galicia National Park, offer truly splendid landscapes and exceptional biodiversity. Further north, make sure you visit Santiago de Compostela, which welcomes many pilgrims from all over the world every year. Designated a UNESCO World Heritage Site, its historical centre has significant architectural heritage.

Day 4 AT SEA

During your journey at sea, make the most of the many services and activities on board. Treat yourself to a moment of relaxation in the spa or stay in shape in the fitness centre. Depending on the season, let yourself be tempted by the swimming pool or a spot of sunbathing. This journey without a port of call will also be an opportunity to enjoy the conferences or shows proposed on board, depending on the activities offered, or to do some shopping in the boutique or to meet the PONANT photographers in their dedicated space. As for lovers of the open sea, they will be able to visit the ship's upper deck to admire the spectacle of the waves and perhaps be lucky enough to observe marine species. A truly enchanted interlude, combining comfort, rest and entertainment.

Bilbao, capital of the Spanish Basque country, is one of the most avant-garde cities in Europe. Its architectural audacity as well as its ancient built heritage will take you on a journey between traditions and innovations. An unusual cable car will allow you to reach the magnificent Guggenheim Museum, a unique construction of stone, glass and titanium, designed by the architect Frank Gehry and home to a collection of modern art and contemporary monumental sculpture. The narrow streets of the old city and the unmissable Ensanche district are also worthy of a visit, as is the Vizcaya bridge, the world's first ever transporter bridge, a UNESCO World Heritage Site.

Days 6 - 7 BORDEAUX

Bordeaux stretches along the banks of the Garonne river, in South-West France. Its rich wine tradition makes it the world capital of wine. Let yourself be carried away by the history of the Port de la Lune, made a UNESCO World Heritage site for its prestigious classical architecture. On the famous Place de la Bourse, the past and the present unite: here you can observe the majestic old buildings reflected in the contemporary Miroir d'eau creation.

Day 8 SAILING ALONG CORDOUAN LIGHTHOUSE

The Small Cruise Ship Collection
www.small-cruise-ships.com

01432 507 280 (within UK)

info@small-cruise-ships.com | small-cruise-ships.com



The Small Cruise Ship Collection

www.small-cruise-ships.com

small-cruise-ships.com

info@small-cruise-ships.com

You will sail past the Cordouan lighthouse. Lying 7 km from the coast, it marks the entrance to the Gironde estuary, formed from the confluence of the Garonne and the Dordogne rivers, where the tumultuous waters combine with the Atlantic Ocean. Built by the architect Louis de Foix in honour of the kings Henri III and Henri IV, "the lighthouse of kings" was opened in 1611. Raised and restored at the end of the 18th century, Cordouan now stands 68 metres tall. Listed as an historic monument in 1862, this masterpiece of marine architecture is the oldest French lighthouse still in activity. In 1823, it was fitted with the first Fresnel lens, named after its inventor, while over the years its lighting system was electrified then computerised.

Day 9 QUIBERON

Welcome to the Quiberon peninsula in the Morbihan, Brittany's wild and contrasting landscape. On the Atlantic Ocean side, you will see stretches of wild coastline with rugged, windswept cliffs, and on the Quiberon Bay side, long sandy beaches overlooking emerald waters. Port Haliguen, a ten-minute walk from Quiberon, is a marina that has retained all its charms of yesteryear.

Day 10 ROSCOFF

Once a city of corsairs, the port of Roscoff is now a popular seaside resort proud to have been labelled a "Small Town with Character". From its tumultuous and fascinating past, Roscoff has preserved an exceptional architectural heritage from the 16th and 17th centuries. Its historic centre is brimming with relics from the past: the magnificent granite mansions of shipowners, the Notre-Dame-de-Croaz-Batz gothic church, and the Old Port, once the stronghold of smugglers and merchants. The town is also known for its foreshore, which boasts a rich algal biodiversity. Its study, beginning in 1872, led to the creation of the first European research and teaching centre in marine biology and oceanography, the Station Biologique de Roscoff.

Day 11 SAINT-MALO

The mere mention of Saint-Malo's name is enough to plunge us back into the richness of its past. The fortifications stand as testimony to the Malouins' determination to defend their citadel, fought over by France and Britain in turn. When we drop anchor here, immerse yourself in the diversity of its heritage: the time when privateers sailed the oceans in search of trade and victories; the legendary yacht races the port city is still famous for, such as the Route du Rhum; and the final resting place of the French writer François-René de Chateaubriand, who was born here and chose to be buried here anonymously.



The Small Cruise Ship Collection

www.small-cruise-ships.com

small-cruise-ships.com

info@small-cruise-ships.com

Day 12 GUERNSEY, CHANNEL ISLANDS

Guernsey is an atypical and unforgettable port of call. This Channel Island will delight you with its mild, idiosyncratic climate and its green and floral landscapes. Don't be surprised to come across dolmens and menhirs here and there, testifying to the long history of the island and its rich heritage. The attractive capital of St. Peter Port is characteristic of the delightful British atmosphere that gives the island its charm. The memory of the great writer Victor Hugo is also very present, as he lived for fifteen years in exile in Guernsey. His home, Hauteville House, preserves his memory. The incredible richness of the decoration gives a clear illustration of the creative genius of this great man.

Day 13 DARTMOUTH & SAILING ALONG JURASSIC COAST

Succumb to the charming setting of the small town of Dartmouth in the county of Devon, South-East England. Set in the heart of lush scenery, on the banks of the River Dart's estuary, the town's magnificent landscapes are typical of English countryside. Its picturesque paved streets will let you discover sumptuous half-timbered houses dating back to the 15th and 16th centuries while, on the northern bank of the river, you will be able to admire former fishermen's houses in their pastel colours. Now a popular tourist destination, this small port town has nonetheless managed to retain its relaxing and romantic atmosphere.

In southern England, discover the coastline of Dorset and East Devon, also called the Jurassic Coast in reference to the many fossils from that period found there. Stretching more than 150 km, the "Pearl of Dorset" is a UNESCO World Heritage Site because of its geological interest. Aboard your ship, admire the site's spectacular white chalk cliffs, home to many sea birds. The scenery, constantly changing with the light, and the different creeks and beaches situated at the feet of these gigantic rock formations, will give you the opportunity to take superb photos. Perhaps you will also be able to glimpse Durdle Door, this natural arch carved out of the rock by erosion.

Day 14 AT SEA

During your journey at sea, make the most of the many services and activities on board. Treat yourself to a moment of relaxation in the spa or stay in shape in the fitness centre. Depending on the season, let yourself be tempted by the swimming pool or a spot of sunbathing. This journey without a port of call will also be an opportunity to enjoy the conferences or shows proposed on board, depending on the activities offered, or to do some shopping in the boutique or to meet the PONANT photographers in their dedicated space. As for lovers of the open sea, they will be able to visit the ship's upper deck to admire the spectacle of the waves and perhaps be lucky enough to observe marine

The Small Cruise
Ship Collection
www.small-cruise-ships.com

01432 507 280 (within UK)

info@small-cruise-ships.com | small-cruise-ships.com



species. A truly enchanted interlude, combining comfort, rest and entertainment.

Day 15 LONDON

The main residence of the British monarch, financial hub and seat of British government, London is the economic and cultural heart of the country. A city of contrasts, attached to its traditions while buzzing with modernity, the capital of the United Kingdom has countless historic districts and notable sites to explore. From Hyde Park to the City through Westminster and Trafalgar Square, get ready to take on London's frenetic tempo. In between a visit to the National Gallery, a stroll through Covent Garden and a trip to Tower Bridge, you can take a quiet breather in one of London's many beautiful parks and gardens.

Please Note:

Itineraries are subject to change.



The Small Cruise Ship Collection

www.small-cruise-ships.com

small-cruise-ships.com

info@small-cruise-ships.com

YOUR SHIP: LE BELLOT

YOUR SHIP: Le Bellot

VESSEL TYPE:

LENGTH:

PASSENGER CAPACITY:

BUILT/REFURBISHED:

Featuring innovative and environmentally-friendly equipment, elegantly designed staterooms, spacious suites with large windows, and lounge areas that open onto the outside, this new limited-capacity yacht boasting just 92 staterooms and suites will offer you a truly unique cruising experience. As the first ship in a new series, Le Bellot will embody the unique atmosphere of a subtle blend of exploration, refinement, intimacy and comfort. Aboard this ship that flies the French flag, you will experience the incomparable pleasure of an intimate cruise, with the possibility of exploring an ever-increasing range of destinations in an ethnic-chic ambiance with luxury service. Experience a luxurious setting where the accent is on authenticity and passion for travel. **RESTAURANTS** As it is an essential part of French culture, gastronomy will naturally have pride of place aboard this new ship. To the back of Deck 4, you will find a 260 m² panoramic restaurant which can accommodate all of our passengers in a single sitting. Designed differently to that on our other ships, this dining area, which opens onto the outside, will have a buffet of salads, desserts and cheeses at your disposal. Our discreet and attentive crew will provide table service for hot meals. In a relaxed atmosphere, an outdoor grill on Deck 3 will

serve grilled meats with a variety of salads and desserts. **PUBLIC AREAS** Le Bellot has many common areas that are designed and equipped to meet all of your needs while preserving the intimacy of each passenger. A 140 m² reception area includes: A reception/concierge desk, An excursions desk, The ship's administrative services, The sales office, manned by our Guest Relations Officer, Our 50 m² boutique which sells clothing, jewellery, beauty products, postcards and various accessories, Toilets accessible to passengers with reduced mobility. A new hydraulic platform with adjustable height provides: Easier boarding than on any other cruise ship, Easier Zodiac embarkation and disembarkation for expeditions, Easier access to the sea for swimming and practising various water sports such as kayaking or paddle-boarding. A pool deck offering: A pool with a panoramic view, equipped with a counter-current swimming system, A pleasant solarium, An outdoor bar and lounge with armchairs and sofas. A 200 m² main lounge which can accommodate all of our passengers to share convivial moments and to host activities organised during the day or evening. Lastly, a theatre that seats 188, equipped with: The latest sound and lighting technology, A LED wall as the stage backdrop, for the projection of high-resolution images and videos. Please click the following links to read more about Ponant and the other Ponant

The Small Cruise Ship Collection
www.small-cruise-ships.com

01432 507 280 (within UK)

info@small-cruise-ships.com | small-cruise-ships.com



The Small Cruise Ship Collection

www.small-cruise-ships.com



small-cruise-ships.cominfo@small-cruise-ships.com



cruise ships.

The Small Cruise Ship Collection

www.small-cruise-ships.com

small-cruise-ships.com

info@small-cruise-ships.com

INSIDE YOUR SHIP



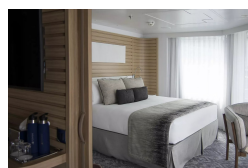
Deluxe Stateroom



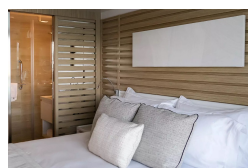
Deluxe Suite



Grand Deluxe Suite



Prestige Stateroom Deck 4



Prestige Stateroom Deck 5

Prestige Stateroom Deck 6

Prestige Suite Deck 5

Prestige Suite Deck 6

The Small Cruise Ship Collection
www.small-cruise-ships.com

01432 507 280 (within UK)

info@small-cruise-ships.com | small-cruise-ships.com



The Small Cruise Ship Collection

www.small-cruise-ships.com

small-cruise-ships.com

info@small-cruise-ships.com

PRICING

20-Apr-2025 to 04-May-2025

Deluxe Suite	£8899 GBP pp
Prestige Stateroom Deck 4	£5595 GBP pp
Prestige Stateroom Deck 6	£6255 GBP pp
Deluxe Stateroom	£4999 GBP pp
Grand Deluxe Suite	£14899 GBP pp
Privilege Suite	£13525 GBP pp
Prestige Suite Deck 6	£12865 GBP pp
Prestige Suite Deck 5	£12199 GBP pp
Prestige Stateroom Deck 5	£5895 GBP pp

ADDITIONAL CHARGES:

Port Taxes 1040 AUD pp