



ARCTIC OCEAN EXPEDITION, ABERDEEN - FAIR ISLE - JAN MAYEN - ICE EDGE - SPITSBERGEN - BIRDING

Search for whales, and other Arctic wildlife of the land, sea, and air on an adventurous voyage from our home port of Vlissingen to our favorite Arctic island group. Birding: - We will have at least one dedicated expedition guide in our team who will share their expert knowledge about bird species and who will be available to help you identify, photograph on deck and learn more about the birds that we see. In addition to outdoor sessions, our guide will focus on species and related information on the birds of the Arctic in re-caps and lectures onboard. Workshop: Sounds of whales and seals In this engaging audio workshop, we will provide you the theoretical background of various acoustic tools that we will help you use to locate and interpret the songs of whales and seals. This fun and informative workshop covers both the theory and practice of analyzing marine mammal sounds, requiring you to bring no additional equipment.



small-cruise-ships.com

info@small-cruise-ships.com



ITINERARY

Day 1: Northward bound

You board the vessel at midday in Vliissingen, headed north. Far north.

Day 2: Sea life on the move

Crossing the North Sea and sailing by Doggersbank, we hope to be lucky enough to spot such species as white-beaked dolphins, harbour porpoises, minke whales, and orcas.

Day 3: Sights of the Granite City

Passengers who boarded in Vliissingen will be offered an excursion by bus to Fowlsheugh, a seabird cliff south of Aberdeen. Over 100,000 pairs of seabird of different species can be seen here. Alternatively, you can join an excursion to the Ythan Estuary, where the beaches are teeming with harbor seals, grey seals, and birds that keep to the shorelines. Both outings are included in the price of booking.

Day 4: Birds, seals, and world-famous knits

We plan to stay the day on Fair Isle, an island in the Shetlands whose seventy-odd inhabitants are known for their beautiful knitwear. This is a fantastic location with accessible seabird breeding grounds, and you may even spot grey seals.

Day 5 – 6: Jan Mayen marine life

You sail north to the Norwegian island of Jan Mayen, 300 nautical miles northeast of Iceland. Your two days at sea do not pass idly, however. Keep a close lookout for any spouts of water from the surrounding seas, heralding the arrival of a minke, fin, orca, or blue whale.



Day 7: Snow-capped seaside volcano

Jan Mayen is a stark volcanic island crowned by the snow-capped summit of Mt. Beerenberg. From the slopes of this imposing 2,300-meter-high (7,545 feet) volcano, broken glaciers grasp out into the frigid sea. With permission from the Norwegian authorities, you can now visit the weather station. You can also walk to the remains of a 17th-century Dutch whaling station amid the thick moss beds of this stark volcanic landscape.

Day 8 - 10: Under the midnight sun & along the ice edge

Basking in the midnight sun, you sail north along the edge of the sea ice in search of bowhead whales, harp seals, polar bears, and a variety of seabirds. You then change direction after about 79° north, cutting west to the rocky edges of the continental shelf of west Spitsbergen. Here you have a good chance of seeing fin whales and - near the glacial mouths of the gaping Spitsbergen fjords - surfacing minke whales.

Day 11: The Arctic island of Spitsbergen

Forlandsundet, between the main island of Spitsbergen and the narrow Prins Karls Forland, is a place of great beauty and fascinating wildlife. Walrus sometimes haul out here. Alternatively, you might sail into St. Johns Fjord or head south to the mouth of Isfjorden, landing at Alkhornet. Seabirds nest on these cliffs, Arctic foxes search below for fallen eggs and chicks, and reindeer graze the sparse vegetation.

Day 12: Journey's end in Longyearbyen

Every adventure, no matter how grand, must eventually come to an end. You disembark in Longyearbyen, the administrative center of Spitsbergen, taking home memories that will accompany you wherever your next adventure lies. But if you're still craving additional chances to spot the Arctic's most iconic apex predator, stay on board for our seven-night north Spitsbergen voyage, "in search of polar bears & pack ice."

Please Note:

All itineraries are for guidance only. Programs may vary depending on ice, weather, and wildlife conditions. Landings are subject to site availabilities, permissions, and environmental concerns per AECO regulations. Official sailing plans and landing slots are scheduled with AECO prior to the start of the season, but the expedition leader determines the final plan. Flexibility is paramount for expedition cruises. The average cruising speed of our vessel is 10.5 knots.



The Small Cruise Ship Collection

www.small-cruise-ships.com

small-cruise-ships.com

info@small-cruise-ships.com

YOUR SHIP: HONDIOUS

YOUR SHIP:

Hondius

VESSEL TYPE:

LENGTH:

PASSENGER CAPACITY:

BUILT/REFURBISHED:

Hondius is the first-registered Polar Class 6 vessel in the world, meeting the latest and highest Lloyd's Register demands for ice-strengthened cruise vessels. Hondius also exceeds the requirements of the Polar Code as adopted by the International Maritime Organization (IMO), allowing you to enjoy the polar regions as much as possible while impacting them as little as possible. Upon completion, Hondius will be the most flexible, advanced, innovative ice-strengthened vessel in the polar regions. It is optimized for exploratory voyages that provide you the utmost first-hand contact with the Arctic and Antarctica. Hotel comfort, expedition class Hondius offers high-quality accommodation for 176 passengers in a range of suites and cabins. The spacious 'Hondius' suite (35 square metres, 377 square feet), six grand suites with balconies (27 square metres, 291 square feet), eight junior suites (19 to 20 square metres, 205 to 215 square feet), eight superior cabins (20 to 21 square metres, 215 to 226 square feet), 11 twin deluxe cabins, (19 to 21 square metres, 205 to 226 square feet), 14 twin window cabins (12 to 14 square metres, 129 to 151 square feet) as well as 28 twin porthole cabins, two triple porthole cabins, and four quadruple porthole cabins that vary in size from 12 to 18

square metres, or 129 to 194 square feet all offer a high level of accommodation. The passenger capacity certificate for Hondius is 196 persons. One deck consists of a large observation lounge and separate lecture room, which are reserved for a wide variety of interactive workshops, exhibitions, and performances particular to Hondius. Though elegantly designed in stylish mid-century modern decor, this vessel holds true to Oceanwide's distinctive cozy and informal atmosphere. Swift & safe ship-to-shore operations It is the philosophy of Hondius' managers to keep sea time as short as possible so that they can focus instead on fast, effective access to shore and near-shore activities. To give you the maximum contact with the nature and wildlife you traveled so far to see, they employ a tough fleet of rigid-hull inflatable Zodiac boats that guarantee swift and safe landing operations for all passengers at the same time. Hondius has two separate gangways and a sheltered indoor Zodiac embarkation platform that can also be used for special outdoor activities, such as kayaking. The fast, flexible, friendly heart of the polar regions The top priority is taking advantage of every wildlife and terrain opportunity as it occurs. To keep the itineraries flexible itineraries and the response time rapid, Hondius is equipped with advanced stabilizers and two main engines capable of powering the vessel up to 15 knots. But Hondius sacrifices no warmth to achieve its keen polar edge: You will have 72 crew and staff members (including expedition and hotel staff) at your service while on board, ensuring that what little time you do spend on the ship you will spend comfortably



The Small Cruise Ship Collection

www.small-cruise-ships.com



small-cruise-ships.cominfo@small-cruise-ships.com



entertained.



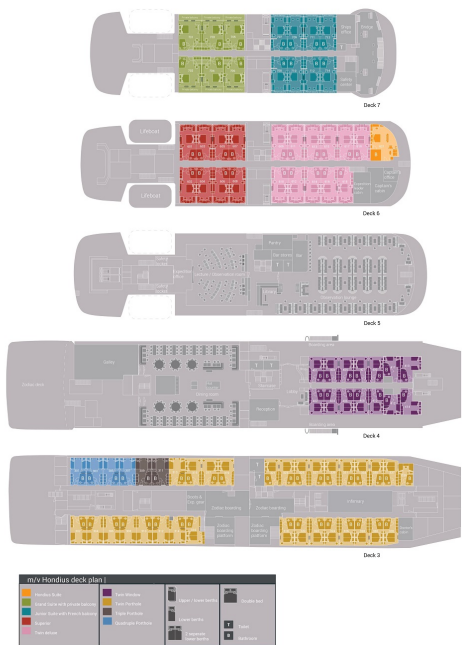
The Small Cruise
Ship Collection

www.small-cruise-ships.com

small-cruise-ships.com

info@small-cruise-ships.com

INSIDE YOUR SHIP



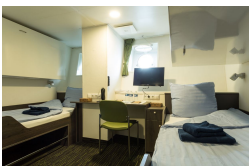
Quadruple Porthole



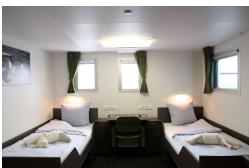
Superior



Triple Porthole



Twin Deluxe



Twin Porthole

Twin Window



PRICING

27-May-2026 to 05-Jun-2026

Superior	£4274 GBP pp
Twin Deluxe	£3773 GBP pp
Twin Porthole	£3350 GBP pp
Twin Window	£3580 GBP pp
Triple Porthole	£2810 GBP pp
Quadruple Porthole	£2348 GBP pp

12-Jun-2026 to 21-Jun-2026

Twin Porthole	£3350 GBP pp
Twin Window	£3580 GBP pp
Triple Porthole	£2810 GBP pp
Superior	£4274 GBP pp
Twin Deluxe	£3773 GBP pp
Quadruple Porthole	£2348 GBP pp