



ARCTIC OCEAN - ABERDEEN, FAIR ISLE, JAN MAYEN, ICE EDGE, SPITSBERGEN, BIRDING

Search for whales, and other Arctic wildlife of the land, sea, and air on an adventurous voyage from our home port of Vlissingen to our favorite Arctic island group. Birding: - We will have at least one dedicated expedition guide in our team who will share their expert knowledge about bird species and who will be available to help you identify, photograph on deck and learn more about the birds that we see. In addition to outdoor sessions, our guide will focus on species and related information on the birds of the Arctic in re-caps and lectures onboard.



ITINERARY

Day 1: Northward bound

You board the vessel at midday in Vlissingen, headed north. Far north.

Day 2: Sea life on the move



The Small Cruise Ship Collection

www.small-cruise-ships.com



small-cruise-ships.com

info@small-cruise-ships.com

Crossing the North Sea and sailing by Doggersbank, we hope to be lucky enough to spot such species as white-beaked dolphins, harbour porpoises, minke whales, and orcas.

Day 3: Sights of the Granite City

Passengers who boarded in Vlissingen will be offered an excursion by bus to Fowlsheugh, a seabird cliff south of Aberdeen. Over 100,000 pairs of seabird of different species can be seen here. Alternatively, you can join an excursion to the Ythan Estuary, where the beaches are teeming with harbor seals, grey seals, and birds that keep to the shorelines. Both outings are included in the price of booking.

Day 4: Birds, seals, and world-famous knits

We plan to stay the day on Fair Isle, an island in the Shetlands whose seventy-odd inhabitants are known for their beautiful knitwear. This is a fantastic location with accessible seabird breeding grounds, and you may even spot grey seals.

Day 5 – 6: Jan Mayen marine life

You sail north to the Norwegian island of Jan Mayen, 300 nautical miles northeast of Iceland. Your two days at sea do not pass idly, however. Keep a close lookout for any spouts of water from the surrounding seas, heralding the arrival of a minke, fin, orca, or blue whale.

Day 7: Snow-capped seaside volcano

Jan Mayen is a stark volcanic island crowned by the snow-capped summit of Mt. Beerenberg. From the slopes of this imposing 2,300-meter-high (7,545 feet) volcano, broken glaciers grasp out into the frigid sea. With permission from the Norwegian authorities, you can now visit the weather station. You can also walk to the remains of a 17th- century Dutch

whaling station amid the thick moss beds of this stark volcanic landscape.

Day 8 – 10: Under the midnight sun & along the ice edge

Basking in the midnight sun, you sail north along the edge of the sea ice in search of bowhead whales, harp seals, polar bears, and a variety of seabirds. You then change direction after about 79° north, cutting west to the rocky edges of the continental shelf of west Spitsbergen. Here you have a good chance of seeing fin whales and – near the glacial mouths of the gaping Spitsbergen fjords – surfacing minke whales.

Day 11: The Arctic island of Spitsbergen

Forlandsundet, between the main island of Spitsbergen and the narrow Prins Karls Forland, is a place of great beauty and fascinating wildlife. Walrus sometimes haul out here. Alternatively, you might sail into St. Johns Fjord or head south to the mouth of Isfjorden, landing at Alkhornet. Seabirds nest on these cliffs, Arctic foxes search below for fallen eggs and chicks, and reindeer graze the sparse vegetation.

Day 12: Journey's end in Longyearbyen

Every adventure, no matter how grand, must eventually come to an end. You disembark in Longyearbyen, the administrative center of Spitsbergen, taking home memories that will accompany you wherever your next adventure lies. But if you're still craving additional chances to spot the Arctic's most iconic apex predator, stay on board for our seven-night north Spitsbergen voyage, "in search of polar bears & pack ice."

Please Note:

Itineraries are subject to change.



The Small Cruise Ship Collection

www.small-cruise-ships.com

01432 507 280 (within UK)

info@small-cruise-ships.com | small-cruise-ships.com



The Small Cruise Ship Collection

www.small-cruise-ships.com



small-cruise-ships.com

info@small-cruise-ships.com

YOUR SHIP: PLACIUS

YOUR SHIP:	Plancius
VESSEL TYPE:	Expedition
LENGTH:	
PASSENGER CAPACITY:	
BUILT/REFURBISHED:	

M/V "Plancius" was built in 1976 as an oceanographic research vessel for the Royal Dutch Navy and was named "Hr. Ms. Tydeman". The ship sailed for the Dutch Navy until June 2004 when she was converted into an expedition cruise ship. The vessel was completely rebuilt as a 114-passenger vessel in 2009 and complies with the latest SOLAS-regulations (Safety Of Life At Sea). M/v "Plancius" is classed by Lloyd's Register in London and flies the Dutch flag. "Plancius" accommodates 114 passengers in 53 passenger cabins with private toilet and shower in 4 quadruple private cabins, 39 twin private cabins (ca. 15 square meters) and 10 twin superior cabins (ca. 21 square meters). All cabins offer lower berths (either two single beds or one queen-size bed), except for the 4 quadruple cabins (for 4 persons in 2x upper and lower beds). The vessel offers a restaurant/lecture room on deck 3 and a spacious observation lounge (with bar) on deck 5 with large windows, offering full panorama view. Plancius has large open deck spaces (with full walk-around possibilities on deck 3), giving excellent opportunities to enjoy the scenery and wildlife. She is furthermore equipped with 10 Mark V zodiacs, including 40 HP 4-stroke outboard engines and 2 gangways on the starboard

side, guaranteeing a swift zodiac operation. M/v "Plancius" is comfortable and nicely decorated, but is not a luxury vessel. Our voyages in the Arctic and Antarctic regions are and will still be primarily defined by an exploratory educational travel programme, spending as much time ashore as possible. The vessel is equipped with a diesel-electric propulsion system which reduces the noise and vibration of the engines considerably. The 3 diesel engines generate 1.230 horse-power each, giving the vessel a speed of 10 - 12 knots. The vessel is ice-strengthened and was specially built for oceanographic voyages. M/v "Plancius" is manned by 17 nautical crew, 19 hotel staff (6 chefs, 1 hotel manager, 1 steward-barman and 11 stewards / cabin cleaners), 8 expedition staff (1 expedition leader and 7 guides-lecturers)



and 1 doctor.



The Small Cruise Ship Collection

www.small-cruise-ships.com

01432 507 280 (within UK)

info@small-cruise-ships.com | small-cruise-ships.com

The Small Cruise Ship Collection

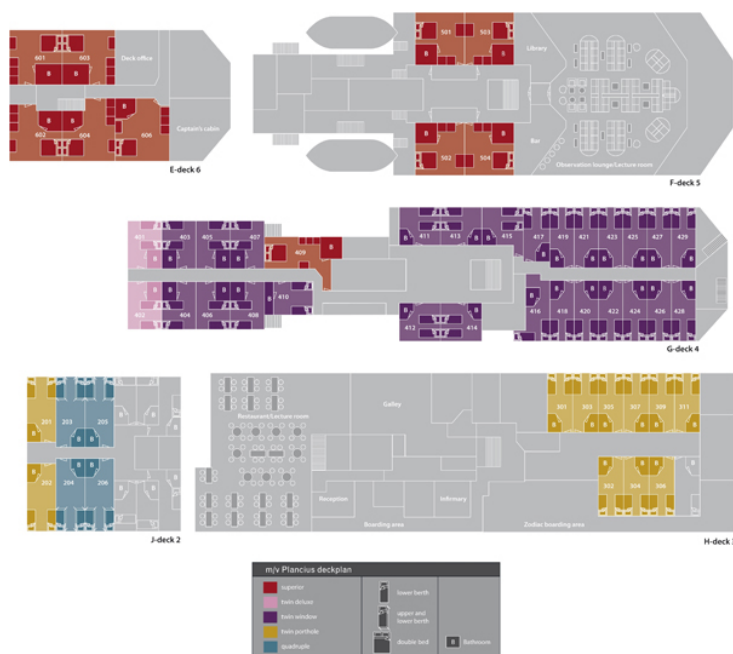
www.small-cruise-ships.com



small-cruise-ships.com

info@small-cruise-ships.com

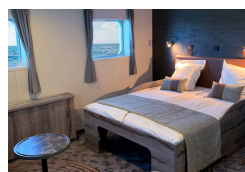
INSIDE YOUR SHIP



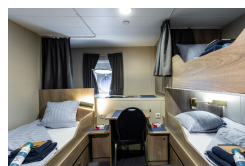
Quadruple Porthole



Superior



Triple Porthole



Twin Deluxe



Twin Porthole

Twin Window



The Small Cruise Ship Collection

www.small-cruise-ships.com



small-cruise-ships.com

info@small-cruise-ships.com

PRICING

26-May-2024 to 06-Jun-2024

Quadruple Porthole	£2370 GBP pp
Twin Deluxe	£3792 GBP pp
Superior	£4266 GBP pp
Twin Window	£3555 GBP pp
Triple Porthole	£2844 GBP pp
Twin Porthole	£3318 GBP pp

28-May-2024 to 06-Jun-2024

Twin Deluxe	£3555 GBP pp
Quadruple Porthole	£2172 GBP pp
Superior	£3950 GBP pp
Twin Porthole	£3081 GBP pp
Triple Porthole	£2607 GBP pp
Twin Window	£3318 GBP pp

25-May-2025 to 03-Jun-2025

Superior	£4229 GBP pp
Twin Deluxe	£3755 GBP pp
Twin Window	£3519 GBP pp
Twin Porthole	£3239 GBP pp
Quadruple Porthole	£2295 GBP pp
Triple Porthole	£2765 GBP pp



The Small Cruise Ship Collection

www.small-cruise-ships.com

01432 507 280 (within UK)

info@small-cruise-ships.com | small-cruise-ships.com