



ANTARCTICA ALL-ACCESS EXPEDITION

Take in the very best of Antarctica, with access to every activity and adventure we offer, at no additional charge, on this incredible voyage. It all adds up to a truly once-in-a-lifetime opportunity to explore this magical continent in all her glory.



ITINERARY

Day 1, Arrival

No need to stress about missed connections or flight delays as you arrive with plenty of time to unwind and enjoy all that the luxurious Arakur Resort & Spa has to offer, or head out and discover the southernmost city in the world, Ushuaia.

Day 2, Ushuaia

Explore the sights of Ushuaia such as the museums and Argentinean leather markets or relax in style and comfort at the hotel. Attend the optional evening briefing for the opportunity to



ask questions and meet some of your fellow explorers.

Day 3, Embarkation

After a final morning exploring Ushuaia or unwinding at the resort, our mid-afternoon transfer will take you to the beautiful MS Seaventure. Our Expedition Team and ship staff will greet you on board, followed by a safety and orientation briefing and Captain's welcome dinner. You're on your way to Antarctica!

Day 4-5, Drake Passage

Join our Polar Experts in the lounge to immerse yourself in all things Antarctic, from its fascinating wildlife to its adventurous history; choose to participate in our renowned Citizen Science program; or sit back and take in this fabled journey while catching your first glimpses of wildlife. Grab your binoculars to identify the many seabirds that follow the ship. As we cross the Antarctic Convergence into Antarctic waters, you'll start to notice the cooler temperatures, your cue to get ready for that first iceberg sighting, an unforgettable moment on every journey.

Day 6, South Shetland Islands

The volcanic South Shetland Islands offer amazing abundance and beauty, so we'll hop into our inflatable Zodiac boats and spend as much time as possible exploring. Be prepared to marvel up close at nature's glory!

Day 7-10, Antarctica

It's time to slow our ship down, the better to explore the dreamlike world all around us and let the power of this amazing place sink in. This is your opportunity to get more intimately acquainted with Antarctica by Zodiac, kayak, snowshoe, or on a magical night of camping, as you look up at the stars or listen to the ethereal call of a nearby whale. For those engaged in our

Citizen Science program, the work of understanding this fragile environment continues. Be sure to keep your camera handy, as penguins, seals and whale sightings are all part of this incredible experience. And a passing iceberg, its magical blue light seeming to glow from within, is something you'll want to share with friends back home.

Day 11-12, Drake Passage

Time to leave this magical place inspired, exhausted, and most likely changed forever. We make our way north, once again crossing the legendary Drake Passage. We'll have one last hurrah as we celebrate the conclusion of our expedition with a special slideshow and photography awards ceremony, then a final meal together.

Day 13, Ushuaia Disembarkation

With huge smiles on weary, content faces, and perhaps some new friends for life, we disembark in the morning, letting you catch a flight to Buenos Aires or stay in Ushuaia for more sights and adventure.

Please Note:

Itineraries are subject to change.



The Small Cruise Ship Collection

www.small-cruise-ships.com



small-cruise-ships.com

info@small-cruise-ships.com

YOUR SHIP: SEAVENTURE

YOUR SHIP:

Seaventure

VESSEL TYPE:

LENGTH:

PASSENGER CAPACITY:

BUILT/REFURBISHED:



A WORLD-CLASS SMALL SHIP EXPERIENCE Seaventure features a 1-A Super ice class rating -- the highest ice class awarded to passenger vessels. This means that we will be able to explore coves, bays, and channels that would previously have been forbidden to us. The ship also offers a host of new activities. There's a sauna, a fitness center, a custom-built citizen science lab, and heated saltwater pool. There is more storage space, which is important because it means we can carry more equipment, so that more of our guests can participate in activities like kayaking, snowshoeing, and camping. The common areas are larger and beautifully appointed, and the ship has two. Ship Facilities: Two Elevators serving all passenger decks Library with computers Fitness Center and Sauna Heated saltwater swimming pool Citizen Science Laboratory All Staterooms Feature: Exterior views Sitting area with chairs or sofa and table Complimentary Mini-Bar Flat Screen TV Telephone Safe to store your valuables Independent temperature controls Luxury toiletries Hair dryer



The Small Cruise Ship Collection

www.small-cruise-ships.com

01432 507 280 (within UK)

info@small-cruise-ships.com | small-cruise-ships.com

The Small Cruise Ship Collection

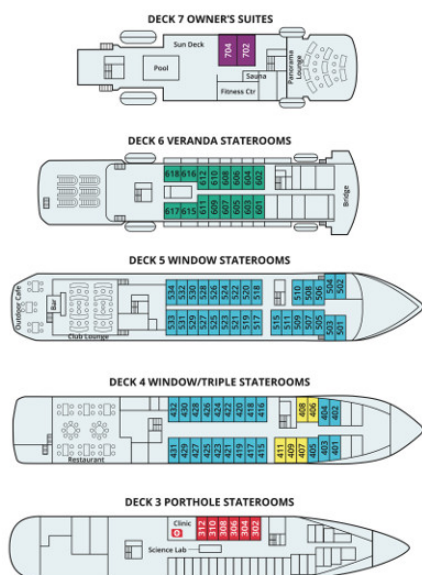
www.small-cruise-ships.com

small-cruise-ships.com

info@small-cruise-ships.com

INSIDE YOUR SHIP

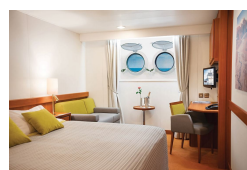
MS SEAVENTURE



Owners Suite



Porthole Stateroom



Triple Stateroom



Veranda Stateroom





The Small Cruise Ship Collection

www.small-cruise-ships.com



small-cruise-ships.com

info@small-cruise-ships.com

PRICING

08-Dec-2024 to 20-Dec-2024

Window Stateroom	£10384 GBP pp
Porthole Stateroom	£8330 GBP pp
Owners Suite	£18023 GBP pp
Triple Stateroom	£7106 GBP pp
Veranda Stateroom	£12873 GBP pp

18-Nov-2025 to 30-Nov-2025

Owners Suite	£15839 GBP pp
Veranda Stateroom	£13199 GBP pp
Window Stateroom	£11475 GBP pp
Triple Stateroom	£8909 GBP pp
Porthole Stateroom	£10245 GBP pp

08-Dec-2025 to 20-Dec-2025

Owners Suite	£15839 GBP pp
Veranda Stateroom	£13199 GBP pp
Window Stateroom	£11475 GBP pp
Porthole Stateroom	£10245 GBP pp
Triple Stateroom	£8909 GBP pp



The Small Cruise Ship Collection

www.small-cruise-ships.com

01432 507 280 (within UK)

info@small-cruise-ships.com | small-cruise-ships.com