



The Small Cruise Ship Collection

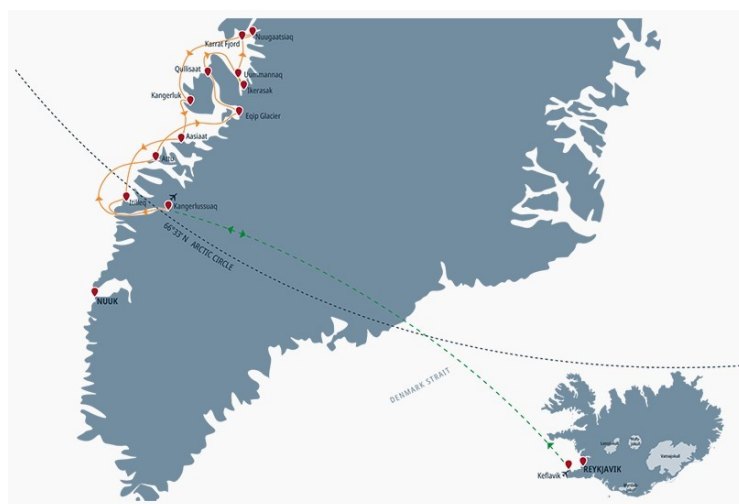
www.small-cruise-ships.com

small-cruise-ships.com

info@small-cruise-ships.com

ADVENTURE WEST GREENLAND - 8 DAY EXPEDITION

Experience Greenland's west coast in a very special way on this journey. Explore remote places that can only be reached by Zodiac and enjoy many natural highlights off the beaten track. Get to know Western Greenland with us on this adventurous cruise!



ITINERARY

Day 1 Kangerlussuaq

Our optional Air & Ground package provides a convenient arrival. Our charter flight takes you from Keflavik in Iceland to Kangerlussuaq in Greenland. Then we transfer you to the port, where the SEAVENTURE anchors. Embarkation is conducted via our Zodiac boats. Your adventure journey begins in the evening.

Day 2 Attu

Just 200 people live in the small town of Attu, near Disko Bay. Use the day for a hike through the unique nature and, with a bit of luck, observe the local wildlife up close.



Day 3 Ilimanaq / Equip Glacier

On the third day of the cruise, one of the smallest settlements in Disko Bay awaits you in Ilimanaq with its 50 inhabitants. The idyllic village with its colorful houses and picturesque surroundings is still mainly inhabited by hunters and fishermen and can look back on a rich history. Learn more about this town on our guided hike (included). Afterwards, the journey continues towards the impressive Equip Glacier.

Day 4 Ikerasak/ Uummannaq

We are about 311 miles (500 km) North of the Arctic Circle. Uummannaq's landmark is the heart-shaped mountain of the same name, at the foot of which nestle numerous colorful houses, winding paths, and countless sled dogs. The small town of Ikerasak, with a population of just under 230, is located near Uummannaq, which is considered one of the most beautiful towns in Greenland. Weather permitting, we will go ashore and explore the town on a city walk (included).

Day 5 Karrat Fjord/ Nuugaatsiaq

In the morning, we drive through the Karrat Fjord. With a bit of luck, you can see icebergs calving as we drive through the fjord landscape - an impressive and breathtaking experience. In the afternoon, we anchor in front of Nuugaatsiaq, a place with a tragic history: in 2017, the village was hit by a big tsunami. The place has not been inhabited since then. If weather permits, you can join a hike and participate in a zodiac cruise (both

included).

Day 6 Kangerluk/ Aasiaat

On the sixth day, we visit the smallest and the largest town on our trip. With just 11 inhabitants, Kangerluk is the smallest town we visit. Aasiaat is the heart of an archipelago of low-lying islands. What Aasiaat lacks in vertical height, it makes up for with its huge coastline. In both settlements we will offer guided hikes (included).

Day 7 Ittileq

Many years ago, the town we are visiting today, was a fishing and trading town. Nowadays there are only around 100 inhabitants in the picturesque fishing village.

Day 8 Kangerlussuaq

We are back in Kangerlussuaq in the early morning. Now it is time to say goodbye to the SEAVENTURE. Our charter flight will take you back from Greenland to Iceland in the early evening. Take a look at our Air & Ground package or this tour to enjoy a comfortable journey home.

****Please note:** Please contact your agent regarding flight arrival time from Kangerlussuaq before you book your return flight from Keflavik. **

Please Note:



The Small Cruise Ship Collection

www.small-cruise-ships.com

small-cruise-ships.com

info@small-cruise-ships.com

All routes and excursions are provisional and subject to change.

All Zodiac excursions are weather dependent.



The Small Cruise Ship Collection

www.small-cruise-ships.com

small-cruise-ships.com

info@small-cruise-ships.com

YOUR SHIP: SEAVENTURE

YOUR SHIP:

Seaventure

VESSEL TYPE:

LENGTH:

PASSENGER CAPACITY:

BUILT/REFURBISHED:



A WORLD-CLASS SMALL SHIP EXPERIENCE Seaventure features a 1-A Super ice class rating -- the highest ice class awarded to passenger vessels. This means that we will be able to explore coves, bays, and channels that would previously have been forbidden to us. The ship also offers a host of new activities. There's a sauna, a fitness center, a custom-built citizen science lab, and heated saltwater pool. There is more storage space, which is important because it means we can carry more equipment, so that more of our guests can participate in activities like kayaking, snowshoeing, and camping. The common areas are larger and beautifully appointed, and the ship has two. Ship Facilities: Two Elevators serving all passenger decks Library with computers Fitness Center and Sauna Heated saltwater swimming pool Citizen Science Laboratory All Staterooms Feature: Exterior views Sitting area with chairs or sofa and table Complimentary Mini-Bar Flat Screen TV Telephone Safe to store your valuables Independent temperature controls Luxury toiletries Hair dryer



The Small Cruise Ship Collection

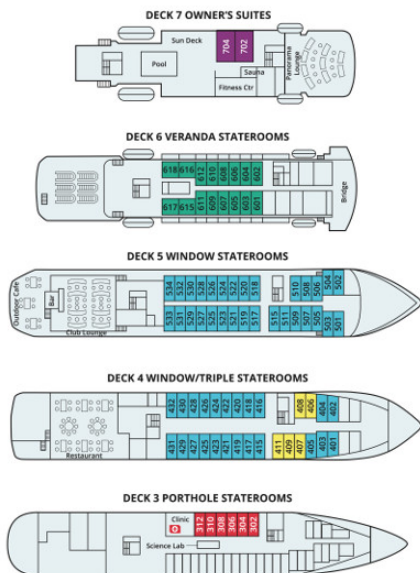
www.small-cruise-ships.com

small-cruise-ships.com

info@small-cruise-ships.com

INSIDE YOUR SHIP

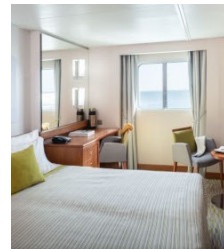
MS SEAVENTURE



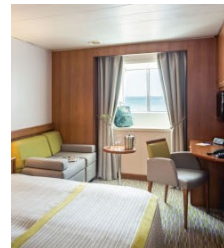
Category 1



Category 2



Category 3



Category 4



Category 5

Category 6



The Small Cruise Ship Collection

www.small-cruise-ships.com

01432 507 280 (within UK)

info@small-cruise-ships.com | small-cruise-ships.com



The Small Cruise
Ship Collection

www.small-cruise-ships.com

small-cruise-ships.com

info@small-cruise-ships.com

PRICING

29-Jul-2024 to 05-Aug-2024

Category 6	£5304 GBP pp
Category 4	£6430 GBP pp
Category 2	£5410 GBP pp
Category 3	£5920 GBP pp
Category 1	£4775 GBP pp
Category 5	£6940 GBP pp
Category 7	£10165 GBP pp

ADDITIONAL CHARGES:

Pax Tax per person per port call or
arrival at the anchorage 7 USD pp



The Small Cruise
Ship Collection

www.small-cruise-ships.com

01432 507 280 (within UK)

info@small-cruise-ships.com | small-cruise-ships.com